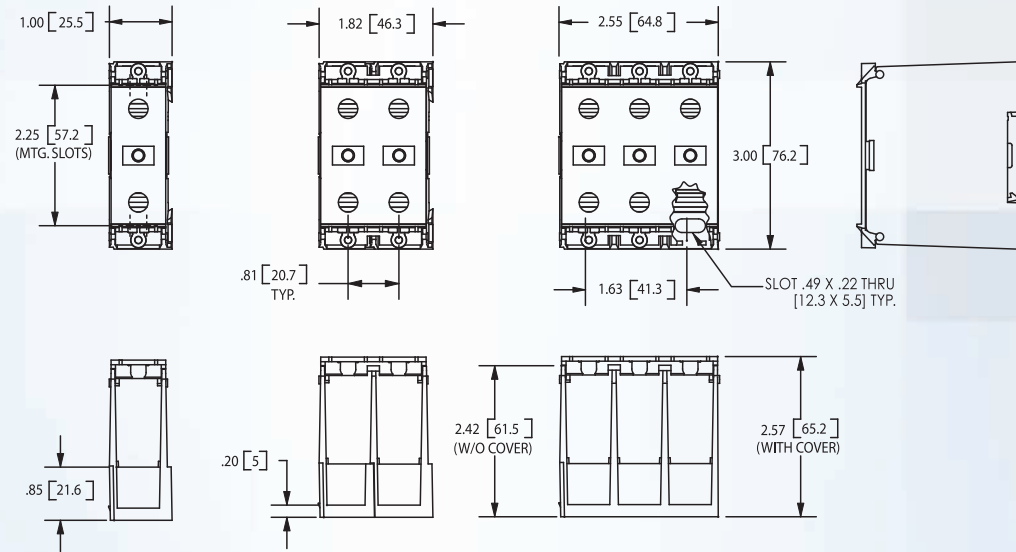


Unique Solutions for Power Distribution...

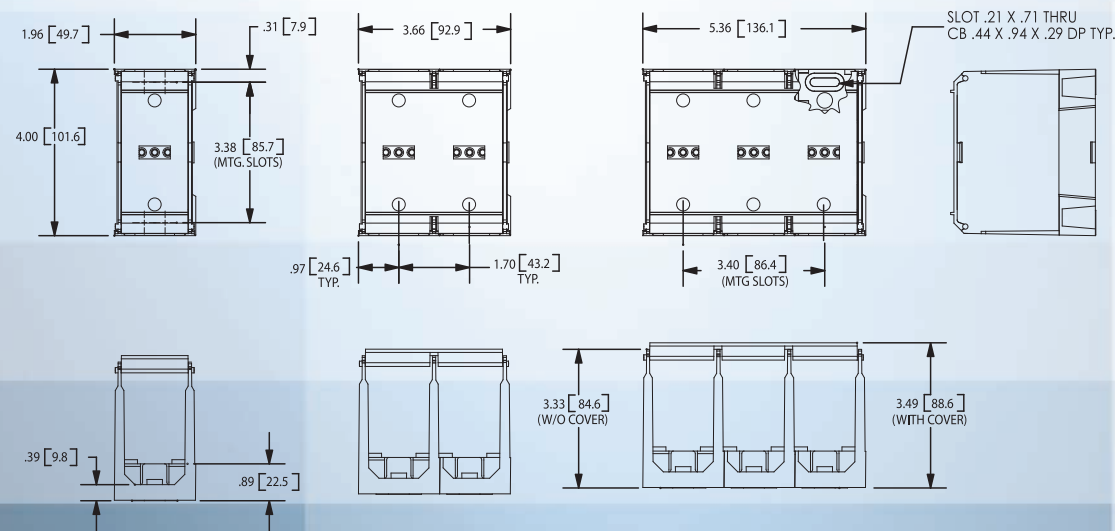


# Thermoplastic Power Blocks With Hinge Covers Attached (CH) - Dimensions

## 132 Series



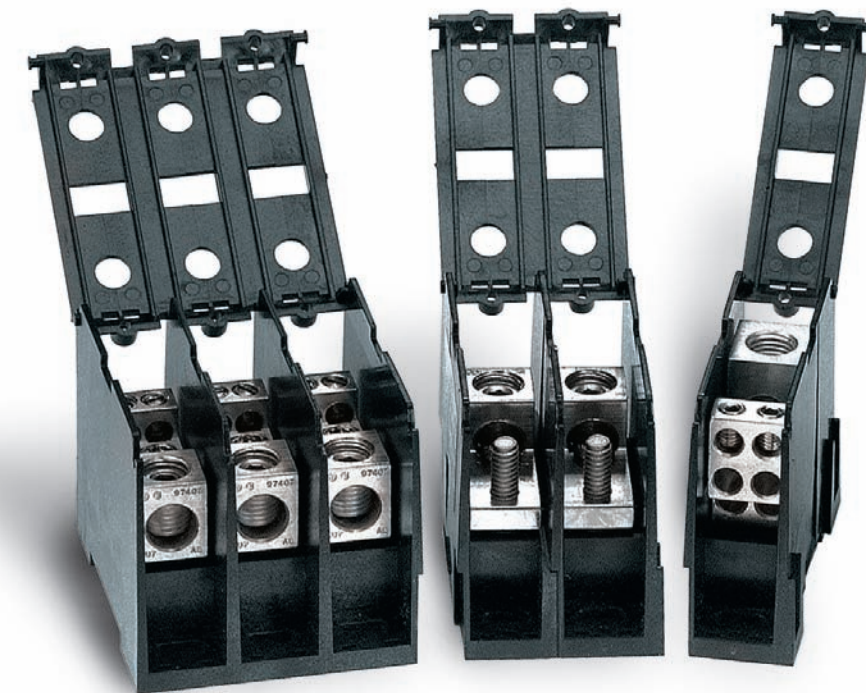
## 133 Series



# Thermoplastic Power Blocks With Hinge Covers Attached (CH)

### Exclusive Features:

- 1 Largest variety of connectors offered on a mid-size footprint
- 2 Higher amperage available on a compact size molding
- 3 Hinge cover standard and attached, rated IP1
- 4 132 Series offers an integral DIN rail-mounting feature
- 5 One catalog number for block and cover



A REGAL-BELOIT COMPANY

13300 Van Camp Road • P.O. Box 468 • Bowling Green, Ohio 43402  
Phone: (419) 352-8441 • Fax: (800) 515-7151 • Website: [www.marathonsp.com](http://www.marathonsp.com)

ISO 9001  
A2314



MARATHON  
SPECIAL PRODUCTS

Made In U.S.A.

Unique Solutions for Power Distribution...

Unique Solutions For Power Distribution...

# Thermoplastic Power Blocks With Hinge Covers Attached (CH)



Marathon Special Products is introducing thermoplastic power blocks with **hinge covers attached**. No lost covers or screws to worry about. Order with one catalog number for block and cover.

These power blocks with the hinge cover are rated IP1. The cover is made from the same material as the insulator base. This cover is snapped on (**no screws**) and is hinged for access from either side of the block!

## Power Distribution Blocks

Catalog #	Poles	Amps	Connector Configuration	Line Wire Range	Openings Per Pole	Connector Configuration	Load Wire Range	Openings Per Pole
1321570 CH	1	175		#2/0-#14AWG	1		#4-#14AWG	4
1322570 CH	2							
1323570 CH	3							
1321580 CH	1	310		350 kcmil - #6 AWG	1		#2/0 - #14 AWG	2
1322580 CH	2							
1323580 CH	3							
1321970 CH	1	335	CU	400 kcmil - #6 AWG	1	CU	*** #2 - #14 AWG	4
1322970 CH	2							
1323970 CH	3							
1331554 CH	1	350		#2/0 - #14 AWG	2		** #4 - #14 AWG	6
1332554 CH	2							
1333554 CH	3							
1331552 CH	1	380		500 kcmil - #4 AWG	1		*** #2 - #14 AWG 350 kcmil - #6 AWG	3
1332552 CH	2							
1333552 CH	3							
1331555 CH	1	420		600 kcmil - #2 AWG	1		** #4 - #14 AWG	12
1332555 CH	2							
1333555 CH	3							
1331587 CH	1	420		600 kcmil - #2 AWG	1		*** #2 - #14 AWG	8
1332587 CH	2							
1333587 CH	3							
1331595 CH	1	420		600 kcmil - #2 AWG	1		2/0 - #14 AWG	4
1332595 CH	2							
1333595 CH	3							
1331585 CH	1	420		600 kcmil - #2 AWG	1		250 kcmil - #1/0 AWG	2
1332585 CH	2							
1333585 CH	3							
1331575 CH	1	510		600 kcmil - #2 AWG	1		*** #2 - 14 AWG #1/0 - #14 AWG	6
1332575 CH	2							
1333575 CH	3							
1331565 CH	1	510		250 kcmil - #1/0 AWG	2		#4 - #14 AWG	12
1332565 CH	2							
1333565 CH	3							
1331588 CH	1	510		250 kcmil - #1/0 AWG	2		*** #2 - #14 AWG	8
1332588 CH	2							
1333588 CH	3							
1331596 CH	1	350	CU	2/0 - #14 AWG	2		** #4 - #14 AWG	6
1332596 CH	2							
1333596 CH	3							
1331597 CH	1	380	CU	500 kcmil - #4 AWG	1		*** #2 - #14 AWG	6
1332597 CH	2							
1333597 CH	3							
1331598 CH	1	380	CU	500 kcmil - #4 AWG	1		*** #2 - #14 AWG	6
1332598 CH	2							
1333598 CH	3							
1331955 CH	1	380	CU	500 kcmil - #4 AWG	1		*** #2 - #14 AWG	6
1332955 CH	2							
1333955 CH	3							
1331953 CH	1	380	CU	500 kcmil - #4 AWG	1		*** #2 - #14 AWG	6
1332953 CH	2							
1333953 CH	3							

## Stud to Distribution Blocks

Catalog #	Poles	Amps	Connector Configuration	Line Wire Range	Openings Per Pole	Connector Configuration	Load Wire Range	Openings Per Pole
1331272 CH	1	510		3/8-16 x 1 3/16"	1		** #4 - #14 AWG	12
1332272 CH	2							
1333272 CH	3							
1331273 CH	1	510		M10 x 30	1		** #4 - #14 AWG	12
1332273 CH	2							
1333273 CH	3							
1331280 CH	1	510		3/8-16 x 1 3/16"	1		*** #2 - #14 AWG	8
1332280 CH	2							
1333280 CH	3							
1331281 CH	1	510		M10 x 30	1		*** #2 - #14 AWG	8
1332281 CH	2							
1333281 CH	3							
1331270 CH	1	510		3/8-16 x 1 3/16"	1		#2/0 - #14 AWG	4
1332270 CH	2							
1333270 CH	3							
1331271 CH	1	510		M10 x 30	1		#2/0 - #14 AWG	4
1332271 CH	2							
1333271 CH	3							

## Stud Blocks

Catalog #	Poles	Amps	Connector Configuration	Line Wire Range	Openings Per Pole	Connector Configuration	Load Wire Range	Openings Per Pole
1321122 CH	1	200		1/4-20 X 9/16 Stud	1		1/4-20 X 9/16 Stud	1
1322122 CH	2							
1323122 CH	3							
1321422 CH	1	310		M6 X 15 Stud	1		M6 X 15 Stud	1
1322422 CH	2							
1323422 CH	3							
1331563 CH	1	310		3/8-16 X 1 3/16	1		3/8 - 16 X 1 3/16	1
1332563 CH	2							
1333563 CH	3							
1331564 CH	1	310		M10 x 30	1		M10 x 30	1
1332564 CH	2							
1333564 CH	3							

## Splicer Blocks

Catalog #	Poles	Amps	Connector Configuration	Line Wire Range	Openings Per Pole	Connector Configuration	Load Wire Range	Openings Per Pole
1321572 CH	1	175		#2/0 - #14 AWG	1		#2/0 - #14 AWG	1
1322572 CH	2							
1323572 CH	3							
1321972 CH	1	350	CU	#2/0 - #14 AWG	2	CU	#2/0 - #14 AWG	2
1322972 CH	2							
1323972 CH	3							
1331305 CH	1	420		600 kcmil - #2 AWG	1		600 kcmil - #2 AWG	1
1332305 CH	2							
1333305 CH	3							
1331360 CH	1	510		250 kcmil - #1/0 AWG	2		250 kcmil - #1/0 AWG	2
1332360 CH	2							
1333360 CH	3							
1331320 CH	1	310		350 kcmil - #6 AWG	1		350 kcmil - #6 AWG	1
1332320 CH	2							
1333320 CH	3							
1331126 CH	1	310		350 kcmil - #6 AWG	1		350 kcmil - #6 AWG	1
1332126 CH	2							
1333126 CH	3							

## Splicer/Stud Blocks

Catalog #	Poles	Amps	Connector Configuration	Line Wire Range	Openings Per Pole	Connector Configuration	Load Wire Range	Openings Per Pole
1321574 CH	1	175		#2/0 - #14 AWG	1		1/4 - 20 X 1/2 Stud	1
1322574 CH	2							
1323574 CH	3							
1321474 CH	1	310		M6 Stud X 13 Stud	1		M6 Stud X 13 Stud	1
1322474 CH	2							
1323474 CH	3							
1331559 CH	1	310		350 kcmil - #6 AWG	1		3/8 - 16 X 1 1/4	1
1332559 CH	2							
1333559 CH	3							
1331558 CH	1	310		350 kcmil - #6 AWG	1		M10 x 30	1
1332558 CH	2							
1333558 CH	3							

## Specifications...

### Electrical

- 600 Volts
- Up to 510 Amps
- Amp Ratings Based on NEC Table 310-16 Using 75° C Copper Wire
- Wire Connectors Rated 75° C or 90° C

### General

- Insulator Base, Thermoplastic, 125° C
- Connector, High Conductive Aluminum, Tin Plated
- Stud Block Connector, High Conductive Copper, Tin Plated
- Stud, Brass, Tin Plated
- Metric Stud, Steel, Zinc Plated
- UL Recognized File No. E62806
- CSA Certified File No. LR19766
- CE (does not apply to 133X559, 133X558)

### Multiple wire combinations:

#### #4 opening

- (2) #10 AWG CU Str.
- (2 to 4) #12 AWG CU Str.
- (2 to 4) #14 AWG CU Str.

#### #2 opening

- (2) #8 AWG CU Str.
- (2) #10 AWG CU Str.
- (2) #12 AWG CU Str.
- (2) #14 AWG CU Str.

#### #2/0 opening

- (2) #6 AWG CU Str.

\* Wire Connector Rated 90° C

\*\* Openings rated for #4 - 14 AWG are multiple wire rated: (2) #10 CU Str, (2 to 4) #12 CU Str, and (2 to 4) #14 CU Str.

\*\*\* Openings rated for #2 - 14 AWG are multiple wire rated: (2) #8 CU Str, (2) #10 CU Str, (2) #12 CU Str, And (2) #14 CU Str.

