



DIN-RAIL
POWER SUPPLIES

PULS



Q
C
X
U
DIMENSION



ML

MiniLine



SL

SilverLine

PRODUCT CATALOG

North America
Product Family 2007

www.puls-power.com/us

PULS-North America

Superior Products, Application/Engineering Assistance and Customer Service

PULS North America is focused and dedicated to delivering the most technologically advanced DIN-rail power supplies on the market today in addition to offering exceptional levels of customer service and application/engineering assistance.

You have known our product for years as we first entered the US Market private labeling PULS designed and manufactured products for a well recognized supplier of Power Products. Since that time, many have copied our physical appearance but never equaled our performance and capabilities. In 2003 our agreement with our previous partner concluded, and PULS North America was created to bring to the North American Market our well accepted line of products and engineering expertise to assist you in selecting and applying our growing family of advanced products.

Every standard product that we make is stocked in our North American Distribution Center and is capable of being shipped to any North American location within 24 hours. In addition, our focused network of highly trained distributors have local inventory as well as application experts to satisfy your demanding requirements.

At our office in Chicago, we offer engineering assistance to all customers and welcome your phone inquiries and application questions. The power supply is the heart of your control system – you should demand the best.

Recently we launched our new Dimension family of switched-mode power supplies. This family is truly a new “Dimension” in power. This new generation of power supplies brings to the market products that are up to 55% smaller than previous designs while offering unmatched efficiency of up to 95%. Additional features of BonusPower® include up to 50% additional output capacity and active power factor correction for a power factor in excess of 0.9. These are only a few of the exciting new features. We continue to expand our offering of power supplies with the introduction of our C-Series and DC-UPS product families.

Our web site at www.puls-power.com/us provides complete application details for all our products; however, if you have questions or need application assistance please contact us at our office in Chicago. We look forward to assisting you with your requirements.

Larry Westbrook
President – PULS, L.P.



PULS facility located in St. Charles, Illinois

TABLE OF CONTENTS

PULS-North America Capabilities	2
PULS-GmbH Moving Forward Across the Globe	3
Dimension – Single & 3-Phase Units, De-coupling Modules	4-5
DC-UPS, Buffer Modules & Batteries	6
MiniLine - Low Power Single Phase Units	7
SilverLine – Single & 3-Phase Units Optional Modules & Accessories	8 9
Standards and Approvals	10-11

PULS-GmbH Moving Forward Across the Globe

Specialization Continues to Pay Off

As a pioneer in the field of switched-mode power supplies, PULS has been setting the standards in technology and innovation since 1980. With a highly motivated and competent team, company founder and owner Mr. Bernhard Erdl nurtures an environment rich in technical expertise and creativity. Rarely are the strengths of a company so openly reflected in its products and capabilities as with PULS.

PULS specialization and 100% focus on the Industrial Power Supply market's needs have continued to pay great dividends as the company continues to expand rapidly across the world.

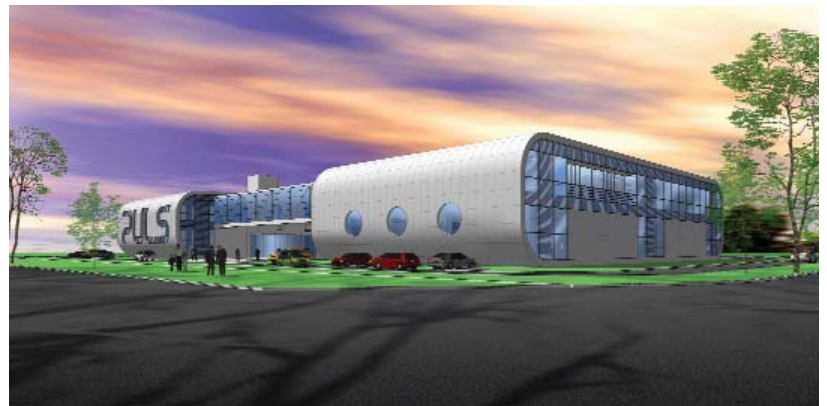
In 2004, PULS entered the Chinese Market bringing PULS expertise to this rapidly growing part of the world. In 2007, PULS will be opening a major new state of the art manufacturing facility in the Czech Republic.

Our customers today are global; PULS is providing specialization and focuses on meeting and serving your power supply requirements wherever they are in the world.

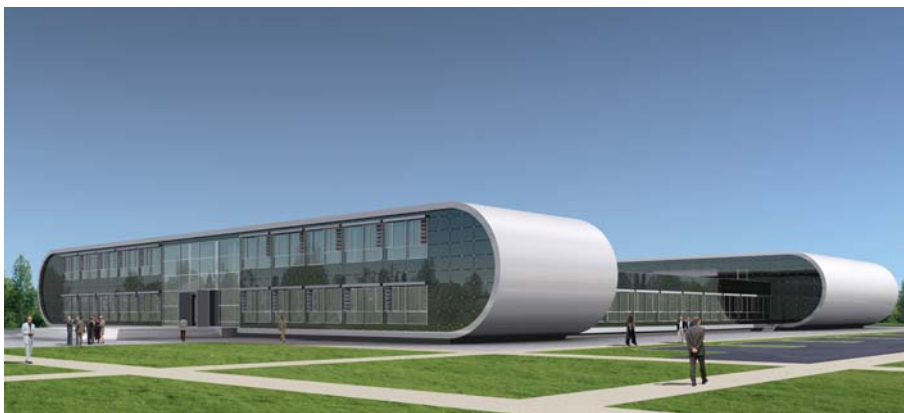
PULS Munich, Germany Headquarters



New PULS facility in China



New PULS facility in Czech Republic



DIMENSION Q - Series



QS10.241
Power Supply



QS5.DNET
DeviceNet Supply



QTD20.241
DC/DC Converter

- Industry's Smallest Footprint
- Efficiencies up to 95%
- SEMI F47 Compliant
- Class 1 Division 2
- 50% BonusPower®
- Power Factor Correction
- Spring Clamp Terminals
- Operational Temperature -25° to +70°C
- MTBF over 1,000,000 hours

- DeviceNet Conformance Tested
- Sized for DeviceNet Cables
- Large Capacitors (Short Charge Time)
- Efficiencies up to 93%
- Class 1 Division 2
- Power Factor Correction
- Spring Clamp Terminals
- QS5.DNET - NEC Class 2
- Operational Temperature -25° to +70°C
- MTBF over 1,000,000 hours

- Perfect for Drive Systems
- Utilizes Kinetic Energy of Motor
- Robust Input Filters
- Special Input Fuses
- Efficiencies up to 95%
- Spring Clamp Terminals
- Operational Temperature -25° to +70°C
- MTBF over 1,000,000 hours

Q - Series Single and 3-Phase Power Supplies

Output Voltage	Output Current	Watts ¹	Phase	Input Voltage ² (50 - 60Hz)	Dimensions L X W X D (mm)	Special Features							Catalog Number	List Price (USD)	
						Power Factor Correction	Parallel Capable	UL60950/508 DC Input	50% Bonus Power	DC OK Contact	SEMI F47 Compliant	Class 1 Division 2			Internal Fuse
12 - 15VDC	15A	180W	1PH	100 - 240VAC	124 X 60 X 117	X	X	X	X	X	X	X	X	QS10.121	\$375.00
24 - 28VDC	3.4A	80W	1PH	100 - 240VAC	124 X 32 X 102	X	X	X	X	X	X	X	X	QS3.241	\$175.00
	5A	120W	1PH	100 - 240VAC	124 X 40 X 117	X	X	X	X	X	X	X	X	QS5.241	\$253.00
	10A	240W	1PH	100 - 240VAC	124 X 60 X 117	X	X	X	X	X	X	X	X	QS10.241 ³	\$346.00
	20A	480W	1PH	100 - 240VAC	124 X 82 X 127	X	X	X	X	X	X	X	X	QS20.241	\$480.00
			3PH	380 - 480VAC	124 X 65 X 127	X	X		X	X	X			QT20.241 ³	\$488.00
28 - 32VDC	8.6A	240W	1PH	100 - 240VAC	124 X 60 X 117	X	X	X	X	X	X	X	X	QS10.301	\$400.00
36 - 42VDC	13.3A	240W	1PH	100 - 240VAC	124 X 82 X 127	X	X	X	X	X	X	X	X	QS20.361	\$625.00
			3PH	380 - 480VAC	124 X 65 X 127	X	X		X	X	X			QT20.361	\$649.00
48 - 56VDC	5A	240W	1PH	100 - 240VAC	124 X 60 X 117	X	X	X	X	X	X	X	X	QS10.481	\$462.00
	10A	480W	1PH	100 - 240VAC	124 X 82 X 127	X	X	X	X	X	X	X	X	QS20.481	\$525.00
			3PH	380 - 480VAC	124 X 65 X 127	X	X		X	X	X			QT20.481	\$550.00

Q - Series DeviceNet Power Supplies - ODVA Compliance Tested

Output Voltage	Output Current	Watts ¹	Phase	Input Voltage ² (50 - 60Hz)	Dimensions L X W X D (mm)	Special Features							Catalog Number	List Price (USD)	
						Power Factor Correction	Parallel Capable	UL60950/508 DC Input	50% Bonus Power	DC OK Contact	NEC Class 2	Class 1 Division 2			Internal Fuse
24VDC	3.8A	91W	1PH	100 - 240VAC	124 X 40 X 117	X		X	X	X	X	X	X	QS5.DNET	\$300.00
	8A	192W	1PH	100 - 240VAC	124 X 60 X 117	X	X		X	X	X	X	X	QS10.DNET	\$420.00

Q - Series DC/DC Converter - For Drive Systems

Output Voltage	Output Current	Watts ¹	Phase	Input Voltage	Dimensions L X W X D (mm)	Special Features	Fuse	Catalog Number	List Price (USD)
24 - 28VDC	20A	480W	-	360 - 600VDC	124 X 65 X 127	DC OK Contact	X	QTD20.241	\$490.00

C - Series



- Industry's Smallest Footprint
- Efficiencies up to 92%
- 20% Power Boost
- Screw Terminals
- Operational Temperature - 25° to +70°C
- MTBF over 1,000,000 hours

Y - Series



- Dual Input
- Perfect for Redundancy
- Operational Temperature -25° to +70°C
- MTBF over 6,000,000 hours

X - Series



- Industry's Smallest Footprint
- Efficiencies up to 96%
- Low Inrush
- Visual Diagnostics
- Stable Output when AC Voltage is between 420 - 520VAC
- Screw Terminals
- Operational Temperature: -25° to +70°C
- MTBF over 950,000 hours

C - Series Single Phase Power Supplies

Output Voltage	Output Current	Watts	Phase	Input Voltage (50 - 60Hz)	Dimensions L X W X D (mm)	Special Features					Catalog Number	List Price (USD)	
						PF Choke (EN61000-3-2)	Parallel Capable	UL60950/508 DC Input	20% Power Boost	DC OK Contact			SEMI F47 Compliant
24 - 28VDC	3A	72W	1PH	100 - 240VAC	124 X 32 X 102		X	X			X	CS3.241 ⁶	\$140.00
	5A	120W	1PH	100-120 / 208-240VAC	124 X 32 X 117			X			X	CS5.241 ^{3,4,5}	\$185.00
	10A	240W	1PH	100-120 / 208-240VAC	124 X 60 X 117			X			X	CS10.241 ^{4,5}	\$247.00
48 - 56VDC	5A	240W	1PH	100-120 / 208-240VAC	124 X 60 X 117	X		X			X	CS10.242	\$280.00
								X			X	CS10.481	\$247.00

Y - Series De-coupling Modules (Diodes)

Output Voltage	Output Current	For Use with Power Supplies	Input Voltage	Dimensions L X W X D (mm)	Special Features	Fuse	Catalog Number	List Price (USD)
10 - 60VDC	20A	Q - Series	2 X 10 - 60VDC	124 X 32 X 102	Class 1 Division 2		YR2.DIODE	\$90.00
		C - Series	2 X 24 - 60VDC	124 X 32 X 117	Signaling Terminals		YRM2.DIODE	\$120.00

X - Series 3-Phase Semi-Regulated Power Supplies

Output Voltage	Output Current	Watts	Phase	Input Voltage (50 - 60Hz)	Dimensions L X W X D (mm)	Special Features					Catalog Number	List Price (USD)	
						PF Choke (EN61000-3-2)	Parallel Capable	UL60950/508 DC Input	25% Power Boost	DC OK Contact			SEMI F47 Compliant
24VDC	40A	960W	3PH	480VAC	124 X 96 X 157	X		X				XT40.242	\$550.00
36VDC	26.6A	960W	3PH	480VAC	124 X 96 X 157	X		X				XT40.362	\$600.00
48VDC	20A	960W	3PH	480VAC	124 X 96 X 157	X		X				XT40.482	\$550.00
72VDC	13.3A	960W	3PH	480VAC	124 X 96 X 157	X		X				XT40.722	\$625.00

¹ For higher wattage applications, paralleling of power supplies is possible. PULS recommends using units that are "Parallel Capable" for parallel applications.

² Most PULS power supplies will operate with a DC input voltage. Consult each individual data sheet for DC input voltage and operational range.

³ This unit is available with Conformal Coating. Contact the factory for pricing and availability.

⁴ This unit is available with Spring Clamps. Contact the factory for pricing and availability.

⁵ This unit is also available with a single voltage input of 120 or 240VAC. Contact the factory for pricing and availability.

⁶ Coming soon. Available in Summer 2007.

DIMENSION: DC-UPS, Buffer Modules, Batteries & Mounting Kits

Power failures, voltage fluctuations or power faults can cause downtime which costs time and money. A buffer module or a DC-UPS provides a reliable and economical solution to protect against the consequences of power failures. Short term power interruptions up to a few seconds can be bridged with a buffer unit. For longer power failures, the DC-UPS is more suitable.



- Requires Only One 12V Battery
- Regulated Output Voltage
- Electronically Protected
- Extensive Battery Management
- Signaling Functions

- DIN-Rail Mountable
- Preassembled
- Includes Two Input Fuses
- Convenient Connection Terminals

- Service-Free Capacitors
- Constant Output Voltage
- Easy Installation
- Signaling Functions

U - Series DC-UPS Controller Only - One External 12V Battery Required

Output Voltage	Output Current	Battery Requirements	Input Voltage from Power Supply / Battery	Dimensions L X W X D (mm)	Special Features	Fuse	Catalog Number	List Price (USD)
22.3VDC	10A	External 3.9 - 28Ah	24 - 28.8 / 12VDC	124 X 49 X 117	Signaling Terminals	X	UB10.241	\$390.00

U - Series DC-UPS - With One Internal 12V Battery Included

Output Voltage	Output Current	Battery Requirements	Input Voltage from Power Supply / Battery	Dimensions L X W X D (mm)	Special Features	Fuse	Catalog Number	List Price (USD)
22.3VDC	10A	None - Internal 5Ah	24 - 28.8 / 12VDC	124 X 123 X 119	Signaling Terminals	X	UBC10.241	\$488.00

U - Series Batteries & Battery Mounting Kits

Output Voltage	Amp Hour	Type	Dimensions L X W X D (mm)	Fuse	Catalog Number	List Price (USD)
12VDC (Only One 12VDC Battery Required per UB10.241)	5Ah	Battery Only for use with UBC10.241	106 X 90 X 70			
	7Ah	Battery with Mounting Kit for use with UB10.241	124 X 155 X 112	X	UZK12.071	\$230.00
		Battery Only for use with UB10.241	94 X 151 X 65		UZB12.071	\$56.00
		Mounting Kit Only for use with UB10.241	124 X 155 X 112		UZO12.07	\$80.00
		Battery with Mounting Kit for use with UB10.241	179 X 214 X 158	X	UZK12.261	\$300.00
	26Ah	Battery Only for use with UB10.241	125 X 166 X 175		UZB12.261	\$250.00
		Mounting Kit Only for use with UB10.241	179 X 214 X 158		UZO12.26	\$80.00

U - Series Buffer Modules (Capacitors)

Output Voltage	Output Current	Watts	Phase	Input Voltage	Dimensions L X W X D (mm)	Special Features	Fuse	Catalog Number	List Price (USD)
24 - 28.8VDC	20A	-	-	24 - 28.8VDC	124 X 64 X 102	Signaling Terminals		UF20.241	\$329.00
48 - 56VDC	20A	-	-	48 - 56VDC	124 X 64 X 102	Signaling Terminals		UF20.481	\$329.00

Z - Series Mounting Kits

Mounting Type	Power Supply Type	Dimensions	Catalog Number	List Price (USD)
Panel Mount	All Dimension (C, Q, U, X & Y Series)	Makes Overall Length 143mm	ZM1.WALL	\$16.00
Side Mount	CS3, CS5, QS3, YR2.DIODE & YRM2.DIODE	See ZM11.SIDE Data Sheet	ZM11.SIDE	\$24.00
Side Mount	QS5	See ZM12.SIDE Data Sheet	ZM12.SIDE	\$24.00
Side Mount	CS10 & QS10	See ZM13.SIDE Data Sheet	ZM13.SIDE	\$24.00
Side Mount	QT20 & UF20	See ZM14.SIDE Data Sheet	ZM14.SIDE	\$28.00

MiniLine



ML70.100
Power Supply

- Ergonomic Design and User Friendly
- Spring Clamp Terminals
- Attractive, Robust Design
- PULS Overload Design™
- Enhanced Parallel Mode Available
- Operational Temperature -10° to +70°C
- MTBF up to 650,000 hours

ML - Series Low Power Single Phase Power Supplies

Output Voltage	Output Current	Watts ¹	Phase	Input Voltage ² (50 - 60Hz)	Dimensions L X W X D (mm)	Special Features						Catalog Number	List Price (USD)
						NEC Class 2	Enhanced Parallel Mode ³	PFC Choke (EN61000-3-2)	DC OK Signal	Class 1 Division 2	Internal Fuse		
5 - 5.5VDC	5A	25W	1PH	100 - 240VAC	75 X 45 X 91	X	X	X	X	X		ML30.101	\$107.00
10 - 12VDC	3.0A	30W	1PH	100 - 240VAC	75 X 45 X 91	X	X	X	X	X		ML30.102	\$120.00
12 - 15VDC	4.2A	50W	1PH	100 - 240VAC	75 X 45 X 91	X	X	X	X	X		ML50.102	\$134.00
	7.5A	90W	1PH	100 - 120/208 - 240VAC	75 X 73 X 103		X	X	X	X		ML100.102	\$154.00
+/-12 or +/-15VDC	1.4 - 2.8A	36W	1PH	100 - 240VAC	75 X 45 X 91	X	X			X		ML30.106	\$117.00
	1.3A	30W	1PH	100 - 240VAC	75 X 45 X 91	X	X		X	X		ML30.100	\$97.00
24 - 28VDC	2.1A	50W	1PH	100 - 240VAC	75 X 45 X 91	X	X	X	X	X		ML50.100 ⁴	\$126.00
						X	X	X	X	X		ML50.101	\$136.00
	X	X	X	X	X	X	ML50.111	\$136.00					
	3.0A	72W	1PH	100 - 120/208 - 240VAC ⁵	75 X 45 X 91	X	X		X	X		ML70.100	\$146.00
	3.9A	95W	1PH	100 - 120/208 - 240VAC	75 X 73 X 103	X	X		X	X		ML95.100	\$188.00
48 - 56VDC	4.2A	100W	1PH	100 - 120/208 - 240VAC	75 X 73 X 103		X	X		X		ML100.100 ⁴	\$165.00
	1.05A	50W	1PH	100 - 240VAC	75 X 45 X 91	X	X			X		ML50.105	\$126.00
	2.1A	100W	1PH	100 - 120/208 - 240VAC	75 X 73 X 103		X	X		X		ML100.105	\$189.00

ML - Series Power Supplies - For Use with 480VAC 3-Phase System

Output Voltage	Output Current	Watts ¹	Phase ⁶	Input Voltage (50 - 60Hz)	Dimensions L X W X D (mm)	Special Features						Catalog Number	List Price (USD)
						NEC Class 2	Enhanced Parallel Mode ³	PFC Choke (EN61000-3-2)	DC OK Signal	Class 1 Division 2	Internal Fuse		
24 - 28VDC	3.75A	90W	2PH	380 - 480VAC	75 X 73 X 103	X		X			X	ML90.200	\$200.00
	4.2A	100W	2PH	380 - 480VAC	75 X 73 X 103			X			X	ML100.200	\$200.00

ML - Series De-coupling Module (Diodes)

Output Voltage	Output Current	Watts	Phase	Input Voltage	Dimensions L x W x D (mm)	Special Features	Fuse	Catalog Number	List Price (USD)
10 - 60VDC	10A	-	-	2 X 10 - 60VDC	75 X 45 X 91	Class 1 Division 2		MLY02.100	\$55.00

¹ For higher wattage applications, paralleling of power supplies is possible. PULS recommends using units with "Enhanced Parallel Mode" for parallel applications.

² Most PULS power supplies will operate with a DC input voltage. Consult each individual data sheet for DC input voltage and operational range.

³ Units with this feature distribute the load equally between the two or more paralleled power supplies.

⁴ This unit is available with Conformal Coating. Contact the factory for pricing and availability.

⁵ All MiniLine units except the ML70.100 automatically adjust to the proper input voltage provided it falls within the specified range. The ML70.100's input voltage must be manually selected.

⁶ Require 2 legs of a 480VAC 3-phase system.

SilverLine



SL20.310
Power Supply

- High Tech Features and Industrial Design
- 12 - 56VDC, 2.5 - 40A
- Single Phase: 40 - 720W
- Three Phase: 120 - 960W
- Integrated Fuses
- Easy Mounting and Assembly
- PULS Overload Design™
- Power Boost
- Enhanced Parallel Mode Available
- Operational Temperature 0° to +70°C
- MTBF up to 740,000 hours

SL - Series Single and 3-Phase Power Supplies

	Output Voltage	Output Current	Watts ¹	Phase	Input Voltage ² (50 - 60Hz)	Dimensions L X W X D (mm)	Special Features						Catalog Number	List Price (USD)		
							NEC Class 2	Enhanced Parallel Mode ³	PFC Choke (EN61000-3-2)	Selectabl Overload	DC OK Signal	Remote Shutdown			Class 1 Division 2	Internal Fuse
Single Phase	12 - 15VDC	3A	40W	1PH	100 - 120/208 - 240VAC ⁴	124 X 49 X 102			X				X	SL2.103	\$180.00	
		15A	180W	1PH	100 - 120/208 - 240VAC ⁴	124 X 120 X 102							X	SL10.104	\$320.00	
	24VDC	2.5A	60W	1PH	100 - 120/208 - 240VAC ⁴	124 X 49 X 102	X	X					X	SL2.100	\$152.00	
		4A	96W	1PH	100 - 120/208 - 240VAC ⁴	124 X 65 X 102	X	X					X	SL4.100	\$263.00	
		5A	120W	1PH	100 - 120/208 - 240VAC ⁴	124 X 64 X 102		X					X	SL5.100	\$233.00	
	24 - 28VDC	5A	120W	1PH	100 - 120/208 - 240VAC ⁴	124 X 64 X 102		X					X	SL5.102	\$230.00	
								X					X	SL5.105	\$306.00	
		10A	240W	1PH	100 - 120/208 - 240VAC ⁴	124 X 120 X 102							X	X	SL10.100	\$315.00
												X	X	SL10.105	\$376.00	
							X	X						SL20.110	\$535.00	
	20A	480W	1PH	100 - 120/208 - 240VAC	124 X 220 X 102		X	X						SL20.111	\$555.00	
							X	X		X				SL20.115	\$575.00	
3-Phase	36 - 43VDC	13.3A	480W	1PH	100 - 120/208 - 240VAC	124 X 220 X 102	X	X					X	SL30.100	\$615.00	
															X	SL20.112
	48 - 56VDC	5A	240W	1PH	100 - 120/208 - 240VAC ⁴	124 X 120 X 102								X	SL10.101	\$420.00
									X					X	SL10.106	\$425.00
							X								SL20.113	\$600.00
	24 - 28VDC	5A	120W	3PH	380 - 480VAC	124 X 73 X 117		X							SL5.300	\$275.00
								X	X					X	SL10.300 ⁵	\$330.00
								X	X						SL20.301	\$420.00
								X	X	X				X	SL20.310	\$440.00
								X	X						SL30.300	\$590.00
	40A	960W	3PH	380 - 480VAC	124 X 275 X 117		X	X						SL40.300	\$675.00	
							X	X	X	X				SL40.301	\$725.00	
X						X							SL10.305	\$420.00		

¹ For higher wattage applications, paralleling of power supplies is possible. PULS recommends using units with "Enhanced Parallel Mode" for parallel applications.

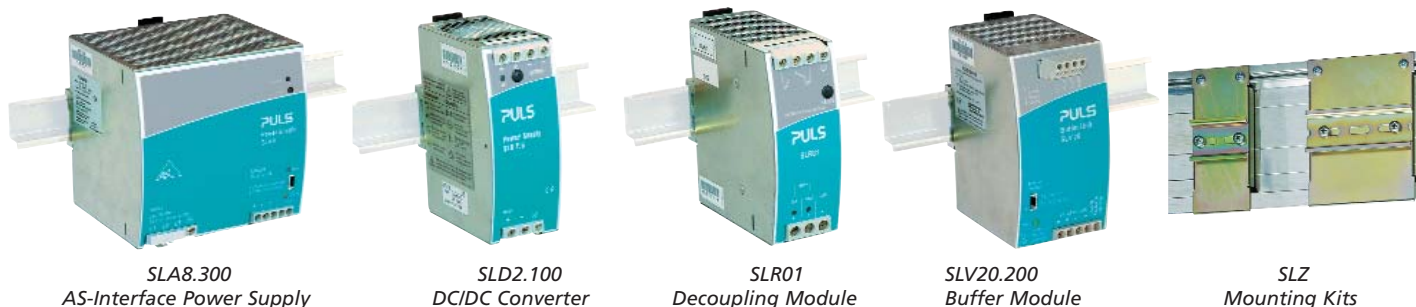
² Most PULS power supplies will operate with a DC input voltage. Consult each individual data sheet for DC input voltage and operational range.

³ Units with this feature distribute the load equally between two or more paralleled power supplies.

⁴ Input voltage is manually selectable.

⁵ This unit is available with Conformal Coating. Contact the factory for pricing and availability.

SilverLine: Optional Supplies, Modules & Accessories



SL - Series Redundancy Power Supplies with Integrated De-coupling Diodes

Output Voltage	Output Current	Watts	Phase	Input Voltage ¹ (50 - 60Hz)	Dimensions L X W X D (mm)	Special Features							Catalog Number	List Price (USD)
						NEC Class 2	Enhanced Parallel Mode ²	PFC Choke (EN61000-3-2)	Selectable Overload	DC OK Signal	De-coupling Diode	Class 1 Division 2		
24VDC	2.5A	60W	1PH	100 - 120/208 - 240VAC ³	124 X 49 X 102	X	X	X	X	X	X	SLR2.100	\$167.00	
	5A	120W	1PH	100 - 120/208 - 240VAC ³	124 X 64 X 102	X	X	X	X	X	X	SLR5.100	\$257.00	
	10A	240W	1PH	100 - 120/208 - 240VAC ³	124 X 120 X 102	X			X	X	X	SLR10.100	\$374.00	

SL - Series De-coupling Modules (Diodes)

Output Voltage	Output Current	Watts	Phase	Input Voltage	Dimensions L X W X D (mm)	Special Features	Fuse	Catalog Number	List Price (USD)
24 - 28VDC	30A	-	-	2 X 24 - 28VDC	124 X 48 X 102	DC OK Relay Contacts		SLR02	\$146.00
	40A	-	-	24 - 28VDC	124 X 48 X 117	DC OK Relay Contact		SLR01	\$132.00

SL - Series Buffer Module (Capacitors)

Output Voltage	Output Current	Watts	Phase	Input Voltage	Dimensions L X W X D (mm)	Special Features	Fuse	Catalog Number	List Price (USD)
22.5 - 27.8VDC	20A	480W	-	24 - 28.8VDC	124 X 64 X 102	Signaling Terminals		SLV20.200	\$299.00

SL - Series DC/DC Converter

Output Voltage	Output Current	Watts	Phase	Input Voltage	Dimensions L X W X D (mm)	Special Features	Fuse	Catalog Number	List Price (USD)
5.1VDC	8A	40W	-	18 - 36VDC	124 X 49 X 102	-	X	SLD2.100	\$195.00

SL - Series AS-Interface Power Supplies

Output Voltage	Output Current	Watts	Phase	Input Voltage ¹	Dimensions L X W X D (mm)	Special Features	Fuse	Catalog Number	List Price (USD)
30.5VDC	2.8A	85W	1PH	100 - 120/208 - 240VAC ³	124 X 49 X 102	NEC Class 2	X	SLA3.100	\$490.00
	4A	122W	1PH	100 - 120/208 - 240VAC ³	124 X 73 X 102	Ground Fault Detection	X	SLA4.100	\$562.00
	8A	244W	1PH	100 - 120/208 - 240VAC ³	124 X 91 X 102	Overload Protection	X	SLA8.100	\$962.00
			3PH	380 - 480VAC	124 X 129 X 117	Overload Protection	X	SLA8.300	\$962.00

SL - Series Mounting Kits

Mounting Type	Power Supply Type	Dimensions (width)	Catalog Number	List Price (USD)
Panel Mount	All SilverLine	Adds 22mm to the width of the power supply	SLZ02	\$16.00
	All SL2 Models	51mm	SLZ11	\$24.00
S7 300 DIN-Rail	All SL5 Single Phase Models	66mm	SLZ12	\$24.00
	SL5.300 & SL10.300	90mm	SLZ13	\$24.00
	All SL10 Single Phase Models	121mm	SLZ14	\$28.00

¹ Most PULS power supplies will operate with a DC input voltage. Consult each individual data sheet for DC input voltage and operational range.

² Units with this feature distribute the load equally between two or more paralleled power supplies.

³ Input voltage is manually selectable.

Standards and Approvals

	CE	UL 508	UL 60950-1	UL 1604 Class I Div 2	NEC Class 2	CB-Scheme IEC 60950, I.T.E.	CB-Scheme IEC 60601 -1, medical	GL Germanischer Lloyd	CCC Mark (China)	Device Net, ODVA approval	SEMI F47-0200, PQ-Star	AS-Interface approval	EN 61000-3-2 (PFC)	EN 61000-3-3 (Flicker)	EN 61000-6-1 (EMC-Immunity)	EN 61000-6-2 (EMC-Immunity)	EN 61000-6-3 (EMC-Emission)	EN 61000-6-4 (EMC-Emission)	EN 55011 / EN 55022 Class B	FCC Part 15 Class B
CS3.241	X	X	X	-	X	X	-	X	-	-	-	-	-	X	X	X	-	X	X	X
CS5.241	X	X	X	-	-	X	-	X	-	-	-	-	-	X	X	X	-	X	X	X
CS5.243	X	X	X	-	-	X	-	X	-	-	-	-	n.a.	X	X	X	X	X	X	X
CS5.244	X	X	X	-	-	X	-	X	-	-	-	-	X	X	X	X	X	X	X	X
CS10.241	X	X	X	-	-	X	-	X	-	-	-	-	-	X	X	X	-	X	X	X
CS10.242	X	X	X	-	-	X	-	X	-	-	-	-	X	X	X	X	X	X	X	X
CS10.243	X	X	X	-	-	X	-	X	-	-	-	-	n.a.	X	X	X	X	X	X	X
CS10.244	X	X	X	-	-	X	-	X	-	-	-	-	-	X	X	X	-	X	X	X
CS10.481	X	X	X	-	-	X	-	X	-	-	-	-	-	X	X	X	-	X	X	X
ML30.100	X	X	X	X	X	X	X	X	-	-	-	-	X	X	X	X	X	X	X	X
ML30.101	X	X	X	X	X	X	-	X	-	-	-	-	X	X	X	X	X	X	X	X
ML30.102	X	X	X	X	X	X	-	-	-	-	-	-	X	X	X	X	X	X	X	X
ML30.106	X	X	X	-	X	X	-	X	-	-	-	-	X	X	X	X	X	X	X	X
ML50.100	X	X	X	X	X	X	X	X	-	-	-	-	X	X	X	X	X	X	X	X
ML50.101	X	X	X	X	X	X	-	-	-	-	-	-	X	X	X	X	X	X	X	X
ML50.102	X	X	X	X	X	X	-	-	-	-	-	-	X	X	X	X	X	X	X	X
ML50.105	X	X	X	-	X	X	-	-	-	-	-	-	X	X	X	X	X	X	X	X
ML50.111	X	X	X	-	X	X	X	X	-	-	-	-	X	X	X	X	X	X	X	X
ML70.100	X	X	X	-	X	X	-	X	-	-	-	-	X	X	X	X	X	X	X	X
ML90.200	X	X	X	-	X	X	-	X	-	-	-	-	X	X	X	X	X	X	X	X
ML95.100	X	X	X	X	X	-	-	-	-	-	-	-	X	X	X	X	X	X	X	X
ML100.100	X	X	X	X	-	X	-	X	-	-	-	-	X	X	X	X	X	X	X	X
ML100.102	X	X	X	X	-	X	-	X	-	-	-	-	X	X	X	X	X	X	X	X
ML100.105	X	X	X	-	-	X	-	X	-	-	-	-	X	X	X	X	X	X	X	X
ML100.200	X	X	X	-	-	X	-	X	-	-	-	-	X	X	X	X	X	X	X	X
MLY02.100	X	X	X	X	-	X	-	X	-	-	-	-	X	X	X	X	X	X	X	X
QS3.241	X	X	X	X	-	X	-	X	-	-	X	-	X	X	X	X	X	X	X	X
QS5.241	X	X	X	X	-	X	-	X	-	-	X	-	X	X	X	X	X	X	X	X
QS5.DNET	X	X	X	X	X	X	-	X	-	X	X	-	X	X	X	X	X	X	X	X
QS10.121	X	X	X	X	-	X	-	X	-	-	-	-	X	X	X	X	X	X	X	X
QS10.241	X	X	X	X	-	X	-	X	-	-	X	-	X	X	X	X	X	X	X	X
QS10.301	X	X	X	-	-	-	-	-	-	-	-	-	X	X	X	X	X	X	X	X
QS10.481	X	X	X	X	-	X	-	X	-	-	-	-	X	X	X	X	X	X	X	X
QS10.DNET	X	X	X	X	-	X	-	X	-	X	X	-	X	X	X	X	X	X	X	X
QS20.241	X	X	X	X	-	X	-	X	-	-	-	-	X	X	X	X	X	X	X	X
QS20.361	X	X	X	X	-	X	-	X	-	-	-	-	X	X	X	X	X	X	X	X
QS20.481	X	X	X	X	-	X	-	X	-	-	-	-	X	X	X	X	X	X	X	X
QT20.241	X	X	X	X	-	X	-	X	-	-	X	-	X	X	X	X	X	X	X	X
QT20.361	X	X	X	X	-	X	-	X	-	-	-	-	X	X	X	X	X	X	X	X
QT20.481	X	X	X	X	-	X	-	X	-	-	-	-	X	X	X	X	X	X	X	X
QTD20.241	X	X	-	-	-	-	-	-	-	-	-	-	n.a.	n.a.	X	X	-	X	X	X

n.a.: not applicable. Approvals may be pending on new products. Please contact PULS for additional information.



Standards and Approvals

	CE	UL 508	UL 60950-1	UL 1604 Class I Div 2	NEC Class 2	CB-Scheme IEC 60950, I.T.E.	CB-Scheme IEC 60601-1, medical	GL Germanischer Lloyd	CCC Mark (China)	Device Net, ODVA approval	SEMI F47-0200, PQ-Star	AS-Interface approval	EN 61000-3-2 (PFC)	EN 61000-3-3 (Flicker)	EN 61000-6-1 (EMC-Immunity)	EN 61000-6-2 (EMC-Immunity)	EN 61000-6-3 (EMC-Emission)	EN 61000-6-4 (EMC-Emission)	EN 55011 / EN 55022 Class B	FCC Part 15 Class B
SL2.100	X	X	X	-	X	X	-	-	X	-	-	-	X	X	X	X	X	X	X	X
SL2.103	X	-	-	-	-	-	-	-	-	-	-	-	X	X	X	X	X	X	X	X
SL4.100	X	X	X	-	X	X	-	-	-	-	-	-	X	X	X	X	X	X	X	X
SL5.100	X	X	X	-	-	X	X	-	-	-	-	-	X	X	X	X	X	X	X	X
SL5.102	X	X	X	-	-	X	X	-	-	-	-	-	X	X	X	X	X	X	X	X
SL5.105	X	X	X	-	-	X	X	-	-	-	-	-	X	X	X	X	X	X	X	X
SL5.300	X	X	X	-	-	X	-	X	-	-	-	-	X	X	X	X	X	X	X	X
SL10.100	X	X	X	X	-	X	-	-	-	-	-	-	-	X	X	X	-	X	X	X
SL10.104	X	X	X	-	-	X	-	-	-	-	-	-	-	X	X	X	-	X	X	X
SL10.105	X	X	X	X	-	X	-	-	-	-	-	-	X	X	X	X	X	X	X	X
SL10.106	X	X	X	-	-	X	-	-	-	-	-	-	X	X	X	X	X	X	X	X
SL10.300	X	X	X	-	-	X	-	X	-	-	-	-	X	X	X	X	X	X	X	X
SL10.305	X	X	X	-	-	-	-	-	-	-	-	-	X	X	X	X	X	X	X	X
SL20.110	X	X	X	-	-	X	-	-	-	-	-	-	-	X	X	X	-	X	X	X
SL20.111	X	X	X	-	-	X	-	-	-	-	-	-	X	X	X	X	X	X	X	X
SL20.112	X	X	X	-	-	X	-	-	-	-	-	-	X	X	X	X	X	X	X	X
SL20.113	X	X	X	-	-	X	-	-	-	-	-	-	-	X	X	X	-	X	X	X
SL20.115	X	X	X	-	-	X	-	-	-	-	-	-	X	X	X	X	X	X	X	X
SL20.301	X	X	X	-	-	X	-	-	-	-	-	-	X	X	X	X	X	X	X	X
SL20.310	X	X	X	-	-	X	-	X	-	-	-	-	X	X	X	X	X	X	X	X
SL30.100	X	X	X	-	-	X	-	-	-	-	-	-	-	X	X	X	-	X	X	X
SL30.300	X	X	X	-	-	X	-	-	-	-	-	-	X	X	X	X	-	X	-	X
SL40.300	X	X	X	-	-	X	-	-	-	-	-	-	X	X	X	X	X	X	X	X
SL40.301	X	X	X	-	-	X	-	-	-	-	-	-	X	X	X	X	X	X	X	X
SLA3.100	X	X	X	-	X	X	-	-	-	-	-	X	X	X	X	X	X	X	X	X
SLA4.100	X	X	X	-	-	X	-	-	-	-	-	X	X	X	X	X	X	X	X	X
SLA8.100	X	X	X	-	-	X	-	-	-	-	-	X	-	X	X	X	-	X	X	X
SLA8.300	X	-	-	-	-	-	-	-	-	-	-	X	X	X	X	-	X	-	X	X
SLD2.100	X	-	-	-	-	-	-	-	-	-	-	-	n.a.	n.a.	X	X	X	X	X	X
SLR01	X	X	X	-	-	-	-	-	-	-	-	-	n.a.	n.a.	X	X	X	X	X	X
SLR02	X	X	X	-	-	-	-	-	-	-	-	-	n.a.	n.a.	X	X	X	X	X	X
SLR10.100	X	X	X	-	-	X	-	-	-	-	-	-	-	X	X	X	-	X	X	X
SLR2.100	X	X	X	-	X	X	-	-	-	-	-	-	X	X	X	X	X	X	X	X
SLR5.100	X	X	X	-	-	X	X	-	-	-	-	-	X	X	X	X	X	X	X	X
SLV20.200	X	X	X	-	-	X	-	-	-	-	-	-	n.a.	n.a.	X	X	X	X	X	X
UB10.241	X	X	X	-	-	-	-	X	-	-	-	-	n.a.	n.a.	X	X	X	X	X	X
UBC10.241	X	X	X	-	-	-	-	X	-	-	-	-	n.a.	n.a.	X	X	X	X	X	X
UF20.241	X	X	X	-	-	X	-	-	-	-	-	-	n.a.	n.a.	X	X	X	X	X	X
UF20.481	X	X	X	-	-	X	-	-	-	-	-	-	n.a.	n.a.	X	X	X	X	X	X
XT40.242	X	X	X	-	-	-	-	-	-	-	-	-	X	X	X	X	X	X	X	X
XT40.362	X	X	X	-	-	-	-	-	-	-	-	-	X	X	X	X	X	X	X	X
XT40.482	X	X	X	-	-	-	-	-	-	-	-	-	X	X	X	X	X	X	X	X
XT40.722	X	X	X	-	-	-	-	-	-	-	-	-	X	X	X	X	X	X	X	X
YR2.DIODE	X	X	X	X	-	-	-	X	-	-	-	-	n.a.	n.a.	X	X	X	X	X	X
YRM2.DIODE	X	X	X	-	-	-	-	X	-	-	-	-	n.a.	n.a.	X	X	X	X	X	X



n.a.: not applicable. Approvals may be pending on new products. Please contact PULS for additional information.

PULS, L.P.

2560 Foxfield Road, Suite 280
St. Charles, IL 60174

(630) 587-9780

(630) 587-9735 Fax

For additional information:
internet: www.puls-power.com/us
email: info@puls-us.com