

Cross Connect Products

Patch Panels	24-30
110 Blocks	31-32
66 Blocks	33
Consolidation Point Enclosure	34
Patch Cord Assemblies	35-37
Tools	38

400 MHz
system supports
data rates up to
4.8 Gb/s

GigaBand® Category 6 Patch Panels

GigaBand Category 6 patch panels provide unbeatable Category 6 performance. With positive PowerSum ACR up to 400 MHz, Category 6 patch panels exceed the latest Category 6 specifications covering hardware, link and channel performance. The GigaBand line of panels is designed to support all existing and future applications. These patch panels also offer backward compatible performance, ensuring that they are suitable for use in existing, as well as new system installations. The GigaBand line includes both Category 6 AlphaSnap and Universal patch panels.

Category 6 AlphaSnap™ Patch Panel

The HellermannTyton Category 6 AlphaSnap line of patch panels is the ultimate in patch panel technology. The panels are equipped with individual, fully modular printed circuit boards (PCBs). Rather than replace the entire panel, each port can be individually removed and replaced if damaged during installation. The AlphaSnap panel is equipped with a rear cable manager. Constructed from extruded aluminum and toughened plastic, this rear cable management bar easily snaps in and out of the back of the patch panel without the need of tools. Four Grip Tie mounts located along the length of the management bar slide into position, which ensure that cables are not twisted or pinched during installation. The AlphaSnap panel introduces a patented slide labeling system, providing excellent protection for panel identification. The panels are configured for both T568A and T568B wiring, eliminating the need for additional panels.

- All modules are individually removable and replaceable
- Panel features very sturdy construction with thick rolled-edge steel plates
- Each port is individually tested 3 times to ensure quality performance
- Unique, patented slide label system provides a flush front panel face
- Label ramp provides easy insertion of the patented slide label
- Pre-perforated label sheets are available for use with HellermannTyton TagPrint PRO software*
- Configured for 568A or 568B wiring on same panel
- Lightweight aluminum rear cable manager comes with the panel and provides for neat and organized installation
- Utilizes same innovative crosstalk technology used in HellermannTyton modular jacks with 10 internal contacts to reduce NEXT
- Optional front cable manager is offered in 1U size and hangs from patch panel screws



A rear cable manager is included with all AlphaSnap patch panels



Optional Front Cable Manager

Product Selection

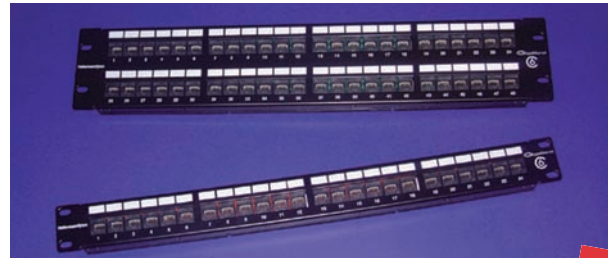
Part Number	Description	Pkg. Qty.
PP110C6G24	Category 6 – 1U 24 port 110 AlphaSnap Patch Panel w/Rear Cable Manager	1
PP110C6G48	Category 6 – 2U 48 port 110 AlphaSnap Patch Panel w/Rear Cable Manager	1
PP110C6G1	Category 6 Replacement Module – Single	1
TRCMA	AlphaSnap Rear Cable Manager	1
TFCM	1U Front Cable Manager	1



*For Laser/Ink jet printing: use HellermannTyton part number: TAGPP11010
For use with Spirit® Printer - use label with HellermannTyton Part Number: TAGHTP-336

Category 6 Universal Patch Panels

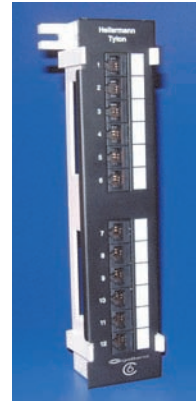
HellermannTyton's Category 6 Universal patch panels are pre-configured in 12, 24 and 48 port versions. The panels are offered with increments of 6 port modules, which can be replaced if damaged during installation.



Category 6 Universal Patch Panels with Rack-Snap Inserts

The 24 and 48 port Universal patch panels are also available with **Rack-Snap Inserts**, a revolutionary new patch panel fixing which drastically reduces installation time.

- Preassembled with the Rack-Snap
- Eliminates the need for cage nuts
- Snaps into standard square holes in the cabinet, making installation easy without the need for tools
- Patch panel can be taken out of the box and snapped directly into the cabinet
- Fits into most manufacturers EIA-310-D standard racks or cabinets with square holes
- Rack-Snap inserts not sold separately



Vertical Universal Patch Panel



Extended 12 port Vertical Panel

NEW

Category 6 Universal Patch Panel

- 6 port modules can be replaced easily if damaged during installation
- Front face provides an attractive, flush appearance
- Write-on labels provided for easy identification
- Self-adhesive labels available for use with HellermannTyton TagPrint Pro software*
- Configured for 568A or 568B wiring on same panel, thus eliminating the need for extra inventory
- Lightweight aluminum rear cable manager can be ordered separately to provide a neat and organized installation using Grip Ties
- Sturdy and smooth rolled edges
- Clear plastic channel protects PCB and allows easy viewing of wiring label
- Utilizes same innovative crosstalk technology used in HellermannTyton modular jacks with 10 internal contacts to reduce NEXT



Optional Rear Cable Manager (TRCMU)



Universal Panel with Rack-Snap Inserts

Product Selection

Part Number	Description	Pkg. Qty.
PP110C612	Category 6 – 1U 12 port 110 Universal Patch Panel	1
PP110C612V	Category 6 – 12 port 110 Vertical Universal Patch Panel with 89D Bracket	1
PP110C612VE	Category 6 – Extended 12 port Vertical Patch Panel with 89D Bracket	1
PP110C624	Category 6 – 1U 24 port 110 Universal Patch Panel	1
PP110C624RS	Category 6 – 1U 24 port 110 Universal Patch Panel w/ Rack-Snap Inserts	1
PP110C648	Category 6 – 2U 48 port 110 Universal Patch Panel	1
PP110C648RS	Category 6 – 2U 48 port 110 Universal Patch Panel w/ Rack-Snap Inserts	1
PP110C66	Category 6 Replacement Module – 6 pack	1
TRCMU	Universal Rear Cable Manager	1
TFCM	Front Cable Manager	1



Optional Front Cable Manager

NEW



*For thermal transfer printing: use HellermannTyton Part Number TAGPP2T6-822 series For Laser printing: use TAGPP2-788 series, For use with Spirit® Printer - use label with HellermannTyton Part Number: TAGHTP-336

200 MHz
system supports
data rates up to
2.4 Gb/s

MegaBand® Category 5e Patch Panels

HellermannTyton MegaBand Category 5e patch panels offer the same features as the GigaBand panels; however, they have been developed to fully comply with the Category 5e performance standard. When used with recommended horizontal cables, these patch panels are key components in HellermannTyton's Category 5e system which has been tested up to 200MHz. HellermannTyton offers Category 5e patch panels in both the AlphaSnap and Universal styles.

Category 5e AlphaSnap™ Patch Panel

The HellermannTyton Category 5e AlphaSnap line of patch panels is the ultimate in patch panel technology. The panels are equipped with individual, fully modular printed circuit boards (PCBs). Rather than replace the entire panel, each port can be individually removed and replaced if damaged during installation. Lightweight aluminum rear cable manager, included with panel, provides easy routing into vertical management by providing four Grip Tie mounts that can slide and rotate to accommodate bundles of up to twelve cables. The AlphaSnap panel introduces a patented slide labeling system, providing excellent protection for panel identification. The panels are configured for both T568A and T568B wiring, eliminating the need for additional panels.

- All modules are individually removable and replaceable
- Panel features very sturdy construction with thick rolled-edge steel plates
- Unique, patented slide label system provides a flush front panel face
- Label ramp provides easy insertion of the patented slide label
- Pre-perforated label sheets are available for use with HellermannTyton TagPrint Pro software*
- Configured for 568A or 568B wiring on same panel
- Lightweight aluminum rear cable manager comes with the panel and provides for a neat and organized installation using Grip Ties



A rear cable manager is included with all AlphaSnap patch panels



Optional Front Cable Manager

Product Selection

Part Number	Description	Pkg. Qty.
PP110C5EA24	Category 5e – 1U 24 port 110 AlphaSnap Patch Panel w/Rear Cable Manager	1
PP110C5EA48	Category 5e – 2U 48 port 110 AlphaSnap Patch Panel w/Rear Cable Manager	1
PP110C5EA1	Category 5e Replacement Module – Single	1
TRCMA	AlphaSnap Rear Cable Manager	1
TFCM	1U Front Cable Manager	1



*For Laser/Ink jet printing: use HellermannTyton part number: TAGPP11010

For use with Spirit® Printer - use label with HellermannTyton Part Number: TAGHTP-336

Category 5e Universal Patch Panels

HellermannTyton's Category 5e Universal patch panels are pre-configured in 12, 24, 48, and 96 port versions to meet the needs of nearly all customer applications. The panels are offered with increments of 6 port modules which can be replaced if damaged during installation.

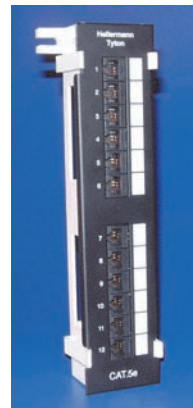
Category 5e Universal Patch Panels with Rack-Snap Inserts

The 24 and 48 port Universal patch panels are also available with **Rack-Snap Inserts**, a revolutionary new patch panel fixing which drastically reduces installation time.

- Preassembled with the Rack-Snap inserts
- Eliminates the need for cage nuts
- Snap into standard square holes in the cabinet, making installation easy without the need for tools
- Patch panel can be taken out of the box and snapped directly into the cabinet
- Fits into most manufacturers EIA-310-D standard racks or cabinets with square holes
- Rack-Snap inserts not sold separately

Category 5e Universal Patch Panels

- 6 port modules can be replaced easily if damaged during installation
- Front face provides an attractive, flush appearance
- Write-on labels provided for easy identification
- Self-adhesive labels are available for use with HellermannTyton TagPrint Pro software*
- Universal panels are pre-assembled with T568B wiring; however, they can be used for both T568A and T568B wiring configurations, thus eliminating the need for extra inventory
- HellermannTyton offers a very simple, easy-to-install rear cable manager which is recommended for all Category 5e installations
- Sturdy and smooth rolled edges
- Clear plastic channel protects PCB and allows easy viewing of wiring label



Vertical Universal Patch Panel



Extended 12 port Vertical Panel



Optional rear cable manager (TRCMU)



Universal Panel with Rack-Snap Inserts



Optional Front Cable Manager

Product Selection

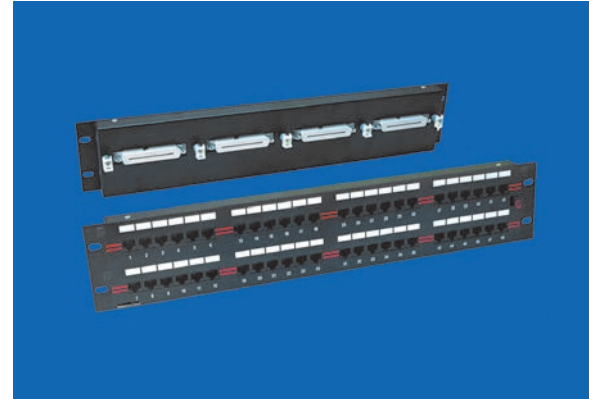
Part Number	Description	Pkg. Qty.
PP110C5E12	Category 5e – 1U 12 port 110 Universal Patch Panel	1
PP110C5E12V	Category 5e – 12 port 110 vertical Universal Patch Panel w/89D Bracket	1
PP110C5E12VE	Category 5e – Extended 12 port Vertical Patch Panel w/89D Bracket	1
PP110C5E24	Category 5e – 1U 24 port 110 Universal Patch Panel	1
PP110C5E24RS	Category 5e – 1U 24 port 110 Universal Patch Panel w/ Rack-Snap Inserts	1
PP110C5E48	Category 5e – 2U 48 port 110 Universal Patch Panel	1
PP110C5E48RS	Category 5e – 2U 48 port 110 Universal Patch Panel w/ Rack-Snap Inserts	1
PP110C5E96	Category 5e – 4U 96 port 110 Universal Patch Panel	1
PP110C5E6	Category 5e Replacement Module – 6 port	1
TRCMU	Universal Rear Cable Manager	1
TFCM	1U Front Cable Manager	1



*For thermal transfer printing: use HellermannTyton Part Number TAGPP2T6-822 series For Laser printing: use TAGPP2-788 series, For use with Spirit® Printer - use label with HellermannTyton Part Number: TAGHTP-336

100 Base-T Patch Panels

The PowerSum telco patch panels convert feeder or equipment cables from 25 pair to 12 individual RJ45 ports with 2 pair presentation suitable for LAN applications including 100 Base-T. Panels utilize 50-pin/25 pair connector compatible with most 100 Base-TX and 100 Base-T Hubs. Active pins are 1, 2, 3 and 6. Available in 24 port and 48 port versions, these panels feature the slide label system, protecting port identification. Please see appendix for color coding information.



Product Selection

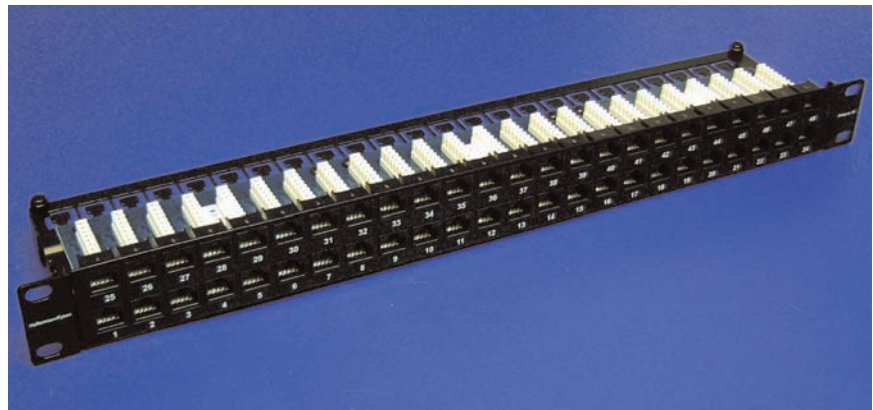
Part Number	Description	Pkg. Qty.
PP100BT24	100 Base-T – 2U 24 Port Telco Patch Panel	1
PP100BT48	100 Base-T – 2U 48 Port Telco Patch Panel	1



* See page 36 for 25 pair cable assemblies and Hydra cable assemblies. For use with Spirit® Printer - use label with HellermannTyton Part Number: TAGHTP-336 and TAGHPP-336

Category 6 and 5e – 48 Port 1U Patch Panels

HellermannTyton's high density patch panels are specifically designed to provide high performance in a 1U format. These panels are robust and easy to install, providing double the density of a standard 1U patch panel. The built-in rear cable management design enables each cable to be securely fixed to the back of the panel.



Product Selection

Part Number	Description	Pkg. Qty.
PP110C6481U	Category 6 - 1U 48 port Patch Panel	1
PP110C5E481U	Category 5e - 1U 48 port Patch Panel	1



Category 5e AlphaSnap Jack to Jack Patch Panels

With the same features as HellermannTyton’s AlphaSnap 110 style patch panel, the Jack to Jack Patch Panels is configured with RJ45 jacks on both the front and rear of the panel and is ideal for applications with pre-terminated cables. **ETL tested and approved for Category 5e Channel performance.**



Product Selection

Part Number	Description	Pkg. Qty.
PP110C5E24JJ	Category 5e - 1U 24 port Jack to Jack Patch Panel	1
PP110C5E48JJ	Category 5e - 2U 48 port Jack to Jack Patch Panel	1



Category 3 Patch Panels

The “voice” panel is the most economical way to offer 50 pair cables in an RJ11 presentation. It is available as a 1 unit, 50 port right-angled panel accepting 3 pairs per RJ11 circuit. Blocks are Krone style punch down.



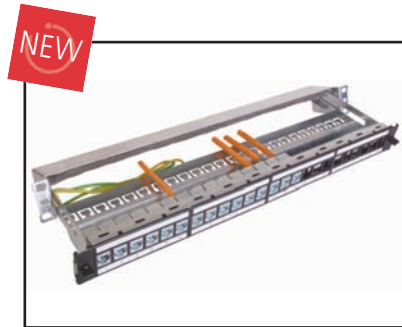
Product Selection

Part Number	Description	Pkg. Qty.
PP110C350	Category 3 – 1U Voice Panel – 50 pair cables/RJ11	1



Category 6 Shielded Modular Patch Panel

HellermannTyton's GigaBand Category 6 shielded modular patch panel accepts HellermannTyton shielded modular jacks (RJ45FC6S) to complete a shielded system solution for superior protection from noise and EMI. The panel utilizes a slide out tray design to allow for easy access to rear. Since proper grounding is essential for a shielded solution, this panel is equipped with a braided sleeve strip that provides a common ground for all ports.



Product Selection

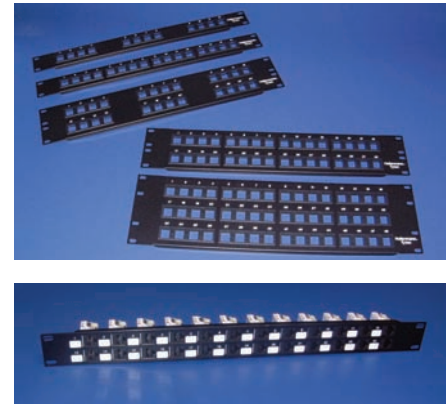
Part Number	Description	Pkg. Qty.
PP110MOD24S	Category 6 Shielded 24 Port Patch Panel	1



Modular Patch Panels

The modular patch panel is designed to accept HellermannTyton modular jacks and connectors, providing flexibility in multimedia installations. It allows the design of a custom panel specifically suited to different applications including coax, voice, audio, video and fiber. Once the connectors are snapped into the panel, they are flush with the front of the plate. These modular panels can be mounted to any standard EIA 19" rack, cabinet or wall mount patch panel bracket. HellermannTyton pre-numbered modular patch panels are available in 12, 16, 24, 32 and 48 port configurations.

HellermannTyton's 1U, modular panel allows for increased density in one rack space. The panel also makes patch cord insertion and removal easy by having jacks mounted sideways in the panel.



P108-24-MOD1U

Product Selection

Part Number	Description	Rack Units	Pkg. Qty.
P108-12-MOD	Blank Modular Patch Panel – 12 Port	1	1
P108-16-MOD	Blank Modular Patch Panel – 16 Port	1	1
P108-24-MOD1U	Blank Modular Patch Panel – 1U, 24 Port	1	1
P108-24-MOD	Blank Modular Patch Panel – 24 Port	2	1
P108-32-MOD	Blank Modular Patch Panel – 32 Port	2	1
P108-48-MOD	Blank Modular Patch Panel – 48 Port	3	1

Category 6 Rated 110 Wiring Blocks

Category 6 - 110 wiring blocks are designed to support Category 6 cabling applications as specified in TIA/EIA-568-B.2-1 with unique spacing that provides superior NEXT performance. These wiring blocks can be used as a consolidation point in HellermannTyton's GigaBand channel. A standard punch down tool or HellermannTyton's 4 pair, Category 6 -110 tool can be used to terminate the blocks. They are available in a number of different configurations for specific connectivity applications. To run cable behind the blocks or for wall mounting, the Category 6 - 48, 96 and 288 pair blocks are available with standoff legs while the 48 and 96 pair blocks are offered in a low profile style without legs. The clips are available only in a 4 pair configuration for optimal performance. **ETL tested and approved for Category 6 component compliance.**

Category 6 Rated 110 Block Kits

To minimize labor and time, HellermannTyton offers field installation kits. These kits include Category 6 110 wiring blocks with standoff legs, 4 pair clips, and identification label holders with white labels.

Category 6 Rated Rack Mountable 110 Block Kits

For applications that require fastening a 110 block to a 19" rack or cabinet, HellermannTyton provides the 96 pair, 192 pair and 288 pair block kits in a rack mountable version. The 96 pair kit includes a cable trough for cable management.



Category 6 — 110 Blocks



Category 6 — 110 Block Kits



Category 6 — Rack Mountable Kits



Rack Mount Cable Trough

Product Selection

Part Number	Description	Pkg. Qty.
110 Blocks		
T110WB48	48 Pair 110 Wiring Block Base	1
T110WBL48	48 Pair 110 Wiring Block Base with Legs	1
T110WB96	96 Pair 110 Wiring Block Base	1
T110WBL96	96 Pair 110 Wiring Block Base with Legs	1
T110WBL288	288 Pair 110 Wiring Block Base with Legs	1
T11046	Category 6 - 4 Pair Clip	10
T110CT	Cable Trough	1
T110CTL	Cable Trough with Legs	1
110 Block Kits		
T110KIT964	96 Pair Category 6 with 4 Pair Clips Installation Kit	1
T110KIT2884	288 Pair Category 6 with 4 Pair Clips Installation Kit	1
110 Block Rack Mountable Kits		
T110RM96-4CT	2U Rack Mount 96 Pair Category 6-110 Block Kit w/4 pair Connecting Block Clips with Cable Trough	1
T110RM192-4	2U Rack Mount 192 Pair Category 6-110 Block Kit w/4 pair Connecting Block Clips	1
T110RM288-4	3U Rack Mount 288 Pair Category 6-110 Block Kit w/4 pair Connecting Block Clips	1
T110RMCT	1U Rack Mount Cable Trough	1



* HellermannTyton's TagPrint PRO software can print labels using Tag 100 series. See Identification Section for more details. For identification purposes, HellermannTyton provides termination hardware labels and a plastic ID holder to protect them.



* Label colors include OR (orange), GR (green), (PL) purple, (GY) gray, (BL) blue, (BR) brown, (YL) yellow, (RD) red, and WT (white). See page 107 for more details.

Category 5e Rated 110 Wiring Blocks

HellermannTyton's 110 wiring blocks provide a dependable, long term system to support data and voice applications. These Category 5e blocks offer an easy-to-install and economical solution for network managers. They are available in a number of different configurations for specific connectivity applications. To run cable behind the blocks or for wall mounting, the Category 5e - 50, 100 and 300 pair blocks are available with standoff legs while the 50 and 100 pair blocks are offered in a low profile style without legs.

Category 5e Rated 110 Block Kits

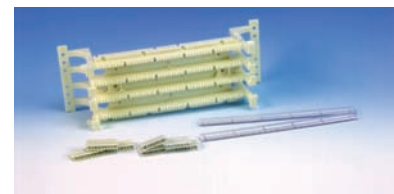
To minimize labor and time, HellermannTyton offers field installation kits. These kits include 110 wiring blocks with standoff legs, 4 or 5 pair clips, and identification label holders with white labels.

Category 5e Rated Rack Mountable 110 Block Kits

For applications that require fastening a 110 block to a 19" rack or cabinet, HellermannTyton provides the 100 pair and 300 pair blocks in a rack mountable version. To organize and route the cable, HellermannTyton provides a rack mount cable trough.



110 Blocks



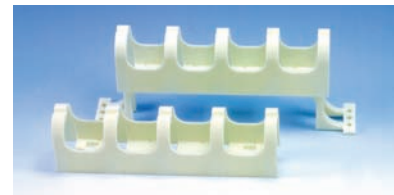
110 Block Kits



Rack Mountable Kits



Rack Mount Cable Trough



Cable Trough (available with and without legs) for use with the 110 wiring blocks

Product Selection

Part Number	Description	Pkg. Qty.
110 Blocks		
T110WB50	50 Pair 110 Wiring Block Base	1
T110WBL50	50 Pair 110 Wiring Block Base with Legs	1
T110WB100	100 Pair 110 Wiring Block Base	1
T110WBL100	100 Pair 110 Wiring Block Base with Legs	1
T110WBL300	300 Pair 110 Wiring Block Base with Legs	1
T1103	3 Pair Clip	10
T1104	4 Pair Clip	10
T1105	5 Pair Clip	10
T110CT	Cable Trough	1
T110CTL	Cable Trough with Legs	1
TAG110*	Termination Hardware Label	1,000
T110ID	Clear Plastic ID Holder	6
110 Block Kits		
T110KIT1004	100 Pair with 4 Pair Clips Installation Kit	1
T110KIT1005	100 Pair with 5 Pair Clips Installation Kit	1
T110KIT3004	300 Pair with 4 Pair Clips Installation Kit*	1
T110KIT3005	300 Pair with 5 Pair Clips Installation Kit	1
T110KIT1004WB	100 Pair w/o legs w/4 Pair Clips Installation Kit*	1
T110KIT1005WB	100 Pair w/o legs w/5 Pair Clips Installation Kit*	1
T110KIT504WB	50 Pair w/o legs w/4 Pair Clips Installation Kit*	1
T110KIT505WB	50 Pair w/o legs w/5 Pair Clips Installation Kit*	1
110 Block Rack Mountable Kits		
T110RM100-4	1U Rack Mount 100 Pair 110 Block w/4 pair Connecting Block Clips	1
T110RM300-4	3U Rack Mount 300 Pair 110 Block w/4 pair Connecting Block Clips	1
T110RM100-5	1U Rack Mount 100 Pair 110 Block w/5 pair Connecting Block Clips	1
T110RM300-5	3U Rack Mount 300 Pair 110 Block w/5 pair Connecting Block Clips	1
T110RMCT	1U Rack Mount Cable Trough	1

NEW Size

* HellermannTyton's TagPrint PRO software can print labels using Tag 100 series. See Identification Section for more details. For identification purposes, HellermannTyton provides termination hardware labels and a plastic ID holder to protect them.



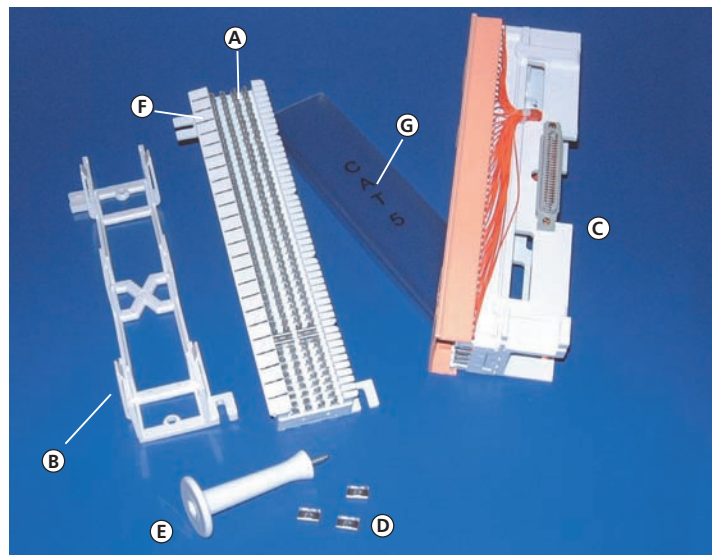
* Label colors include OR (orange), GR (green), (PL) purple, (GY) gray, (BL) blue, (BR) brown, (YL) yellow, (RD) red, and WT (white). See page 107 for more details.

Category 5 Rated 66 Blocks

Accepted throughout the industry, HellermannTyton's Category 5 rated 66 block is used in equipment rooms and wiring closets. These blocks are used for connecting voice and data cables to premise equipment. Offered in a 50 pair configuration, the 66 block is easy to install, reliable, and economical. HellermannTyton offers a standoff bracket as a method of mounting the 66 block. Molded from a flame-retardant thermoplastic, the 89D bracket is open on the top and bottom, enabling the insertion of cable before snapping on the block. The network interface block is designed for use at the demarcation point – it is a 66 block with one female, prewired 25 pair connector located on the right side and is included with an 89D mounting bracket, as well as a snap-on, orange hinged cover to designate the network interface point.

66 Block Accessories

- The bridging clip is designed to make a common connection on the 66 block adjacent quick clips. Formed from a tin plated "grade A" copper alloy, the clips require no tools for installation.
- To keep the cable organized and routed properly, a wire distribution spool with a #10 wood screw is offered. The spool mounts easily on cross connect frames or backboards.
- Designation strips are available to identify the circuits on the 66 block. Easily snapped onto the side of the block, these white strips provide a platform for HellermannTyton labels, or can be written upon with a pen.
- Plastic covers are offered for the 66 connecting blocks to protect the wiring. They are molded of self-extinguishing clear plastic that easily snaps onto the block.



Part Number	Description	Dimensions (h x w x d)	Product Selection	
			Pkg.	Qty.
T66M1-50	(A) 66 Clip Connecting Block 50 pair	10" x 2.56" x 1.2"	1	
T89D	(B) Standoff Bracket for 66 Blocks – White	10" x 3.4" x 1.5"	1	
T700A-66-B1-25	(C) Network Interface Block 25 pair	10" x 3.4" x 2.75"	1	
TSA1	(D) Bridging Clip	.25" x .5"	25	
T66WDS	(E) Wire Distribution Spool with #10 wood screw – White	1.68" x 1.68" x 2.95"	10	
T66DS	(F) Designation Strip – White	10" x .5"	2	
T66MC4	(G) Plastic Cover for 66 Block	10" x 2.56"	1	



Consolidation Point Enclosure

HellermannTyton offers a versatile solution for frequent moves, adds and changes (MACs) with the Consolidation Point Enclosure. Ideal for zone cabling solutions, the enclosure allows the end-user the flexibility to use various cabling design options.

Use either the 110 style, mini patch panels, or the modular panel design to accommodate Category 6, Category 5e, coax, or fiber applications.



RE28 Enclosure



RE18 Enclosure



R110MB

(Wiring block sold separately)



RMD08



RMDK08

Product Selection

Part Number	Description	Dimensions	Pkg. Qty.
RE18	18" Enclosure	Base: 18" H x 14.1" W x 4" D Cover: 19.5" H x 15.75" W	1
RE28	28" Enclosure	Base: 28" H x 14.35" W x 4" D Cover: 29.5" H x 15.5" W	1
T110WB48	Category 6, 48 Pair 110 Wiring Block	See page 31	1
T110WB96	Category 6, 96 Pair 110 Wiring Block	See page 31	1
T110WB50	Category 5e, 50 Pair 110 Wiring Block	See page 32	1
T110WB100	Category 5e, 100 Pair 110 Wiring Block	See page 32	1
R110MB	110 Mounting Bracket w/screws	9.6" H x 4.4" W x .728" D	1
RMD08	Computer Data Module	6.9" H x 3.2" W x 2.2" D	1
RMDK08	Keystone Data Module	3.9" H x 6.9" W x 3.9" D	1



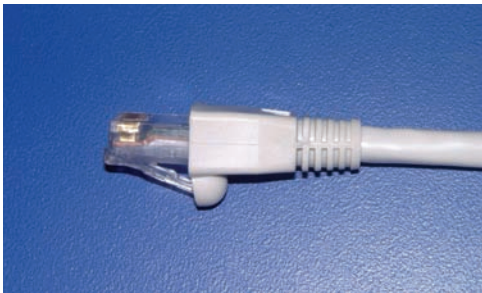
Patch Cords

Designed to maintain signal integrity, HellermannTyton offers a full line of high quality patch cords. These products are critical to the performance of the entire system, as inferior patch cords are most often the weak links in any compliant system.

HellermannTyton offers one style of Category 6 patch cords and two styles of Category 5e patch cords. These patch cords have been thoroughly tested and guarantee the same high standard as the HellermannTyton connectivity hardware. HellermannTyton patch cords are available in 3, 5, 7, 10, 14 and 20 or 25 foot lengths in blue, yellow, green, red, gray, white and black*.

Category 6 GigaBand® Patch Cords

The HellermannTyton Category 6 patch cord features a strain relief boot, preventing tangling and excessive bending while reducing stress on the cable. The boot matches the color of the cable. **ETL tested and approved for component compliance.**



Product Selection

Part Number	Description	Pkg. Qty.
PC6X3	Category 6 – 3 foot Patch Cord	1
PC6X5	Category 6 – 5 foot Patch Cord	1
PC6X7	Category 6 – 7 foot Patch Cord	1
PC6X10	Category 6 – 10 foot Patch Cord	1
PC6X14	Category 6 – 14 foot Patch Cord	1
PC6X20	Category 6 – 20 foot Patch Cord	1



Replace "X" in the part number with the following letters for desired color: X = BLU (blue), YEL (yellow), GRN (green), RED (red), GRY (gray), W (white), BLK (black)

Product Selection

Part Number	Description	Pkg. Qty.
PCX1*	Category 5e – 1 foot Patch Cord	1
PCX3	Category 5e – 3 foot Patch Cord	1
PCX5	Category 5e – 5 foot Patch Cord	1
PCX7	Category 5e – 7 foot Patch Cord	1
PCX10	Category 5e – 10 foot Patch Cord	1
PCX14	Category 5e – 14 foot Patch Cord	1
PCX25	Category 5e – 25 foot Patch Cord	1



Replace "X" in the part number with the following letters for desired color: X = BLU (blue), YEL (yellow), GRN (green), RED (red), GRY (gray), W (white), BLK (black) * Available in BLU (blue) and GRY (gray) only.

Category 5e Patch Cords

HellermannTyton's Category 5e patch cords feature a slim-line strain relief boot, preventing excessive bending while reducing stress on the cable. The slim-line boot is flush to the modular plug, excellent for use in high density active equipment. The boot matches the color of the cable.



Category 6 Shielded Patch Cord

HellermannTyton's GigaBand Category 6 shielded patch cord features foil shielding to ensure signal integrity and a clear snagless plug latch that prevents tangles when pulling in tight areas. Available in 3, 5, 7, 10, 14 and 20 foot lengths.



Product Selection

Part Number	Description	Pkg. Qty.
PCS6GRY3	Category 6 Shielded Patch Cord - 3 foot, Gray	1
PCS6GRY5	Category 6 Shielded Patch Cord - 5 foot, Gray	1
PCS6GRY7	Category 6 Shielded Patch Cord - 7 foot, Gray	1
PCS6GRY10	Category 6 Shielded Patch Cord - 10 foot, Gray	1
PCS6GRY14	Category 6 Shielded Patch Cord - 14 foot, Gray	1
PCS6GRY20	Category 6 Shielded Patch Cord - 20 foot, Gray	1



Hydra Cable Assemblies

HellermannTyton also offers 100 Base-T telco to RJ45 hydra cable assemblies. They exist with 12 RJ45 leads to each 25 pair male connector. The 25 pair connectors are offered either straight or 180° exit, which fit most 100 Base-T hubs. Manufactured with quality components, every assembly is individually tested. The hydra cable assemblies have a flexible construction and are available in 5, 10, and 15 foot lengths.



Product Selection

Part Number	Description	Pkg. Qty.
HCAC5S5	Hydra Cable Assembly – 100 Base-T Straight 25 Pair – 5 foot	1
HCAC5S10	Hydra Cable Assembly – 100 Base-T Straight 25 Pair – 10 foot	1
HCAC5S15	Hydra Cable Assembly – 100 Base-T Straight 25 Pair – 15 foot	1
HCAC5A5	Hydra Cable Assembly – 100 Base-T 180° Angled 25 Pair – 5 foot	1
HCAC5A10	Hydra Cable Assembly – 100 Base-T 180° Angled 25 Pair – 10 foot	1
HCAC5A15	Hydra Cable Assembly – 100 Base-T 180° Angled 25 Pair – 15 foot	1





Telco Cable Assemblies

The 100 Base-T telco cable assembly is a 25 pair stranded cable with a 25 pair male connector on either end. Connector orientations are straight or angled at 120° to allow for greater flexibility. Manufactured with quality components, every assembly is individually tested. Telco cable assemblies are available in 5, 10 and 15 foot lengths.

Product Selection

Part Number	Description	Pkg. Qty.
TCAC555	Telco Cable Assembly – 100 Base-T Straight 25 Pair – 5 foot	1
TCAC5510	Telco Cable Assembly – 100 Base-T Straight 25 Pair – 10 foot	1
TCAC5515	Telco Cable Assembly – 100 Base-T Straight 25 Pair – 15 foot	1
TCAC5A5	Telco Cable Assembly – 100 Base-T 120° Angled 25 Pair – 5 foot	1
TCAC5A10	Telco Cable Assembly – 100 Base-T 120° Angled 25 Pair – 10 foot	1
TCAC5A15	Telco Cable Assembly – 100 Base-T 120° Angled 25 Pair – 15 foot	1



110 to RJ45 Category 5 Patch Cords

HellermannTyton also offers a patch cord for patching network equipment to 110 connecting blocks. The Category 5 patch cords connect a 4 pair 110 connector to an 8 position modular jack. The patch cords are available wired as T568A or T568B.



110 to 110 Category 5 Patch Cords

Designed to be used between 110 termination blocks, HellermannTyton’s factory terminated 110 – Category 5 patch cords provide reliable connections with high performance.

Product Selection

Part Number	Description	Color	Pkg. Qty.
PC1103	Category 5, 3 foot – 4 pair 110 connector to 4 pair 110 connector patch cord	Gray	1
PC1107	Category 5, 7 foot – 4 pair 110 connector to 4 pair 110 connector patch cord	Gray	1
PC11010	Category 5, 10 foot – 4 pair 110 connector to 4 pair 110 connector patch cord	Gray	1
PC11014	Category 5, 14 foot – 4 pair 110 connector to 4 pair 110 connector patch cord	Gray	1
PC110453A	Category 5, 3 foot – 4 pair 110 connector to RJ45 jack patch cord – T568A Wired	Gray	1
PC110457A	Category 5, 7 foot – 4 pair 110 connector to RJ45 jack patch cord – T568A Wired	Gray	1
PC1104510A	Category 5, 10 foot – 4 pair 110 connector to RJ45 jack patch cord – T568A Wired	Gray	1
PC1104514A	Category 5, 14 foot – 4 pair 110 connector to RJ45 jack patch cord – T568A Wired	Gray	1
PC110453B	Category 5, 3 foot – 4 pair 110 connector to RJ45 jack patch cord – T568B Wired	Gray	1
PC110457B	Category 5, 7 foot – 4 pair 110 connector to RJ45 jack patch cord – T568B Wired	Gray	1
PC1104510B	Category 5, 10 foot – 4 pair 110 connector to RJ45 jack patch cord – T568B Wired	Gray	1
PC1104514B	Category 5, 14 foot – 4 pair 110 connector to RJ45 jack patch cord – T568B Wired	Gray	1



TOOLS

Termination Tools

IT110EX

- Expert, spring-loaded termination tool
- Impact pressure adjustment control for modifying impact settings
- For use with HellermannTyton's 110 and 66 block blade
- Accepts all manufacturers' twist and lock style blades
- Non-slip handle provides a cushioned heel
- Latched area on handle for storing the replacement blades
- Offers a hook and a screwdriver to aid in the installation process. The multi-functional hook can separate twisted pair wire, strip insulation, and cut wire. The screwdriver doubles as a IDC contact insertion tool
- Optional light (IT110L) for dimly lit applications can be attached directly to the tool, the light is supplied with three batteries

IT1105

- Combination impact tool used to seat and cut UTP cable on a 110 wiring block or to seat 4 and 5 pair 110 connecting blocks
- Equipped with an ergonomic rubber handle that promotes a non-slip user friendly grip

Wire Strippers

HTEXWS

- Expert wire stripping tool that is both a cable cutter and stripper
- Fully adjustable by a thumb screw
- Cut and strip almost any cable including UTP/STP data cable, 4, 6, and 8 conductor flat satin cable, 25 pair multi-conductor cable, 14-8 AWG hook-up wire, and coaxial cable
- Compact and can easily slip into a pocket - also allows for attaching to key chain or wrist strap

HTWS

- Compact wire stripper and an IDC insertion tool

Punch Down Installation Palm Tool

HellermannTyton's palm tool fits ergonomically in the hand to ease the punch down process of modular jacks, shielded jack, as well as the individual ports in the Category 5e and Category 6 AlphaSnap patch panels.



IT110EX

IT110L



IT1105



IT1104C6H



HTEXWS



HTWS



PIPT

Product Selection

Part Number	Description	Pkg. Qty.
IT110EX	Expert Impact Tool with 110 Blade	1
IT110L	Expert Impact Tool light w/batteries	1
IT110B	Replacement 110 Blade	1
IT66B	66 Block Blade	1
IT1105	5 Pair Impact Tool	1
IT1105B	5 Pair Impact Tool Blade Cartridge	1
IT1104C6H	4 Pair Category 6 110 Block Head	1
HTEXWS	Wire Stripper and Cable Cutter - Black	1
HTWS	Wire Stripper - Yellow	1
PIPT	Punch Down Installation Palm Tool - Blue	1