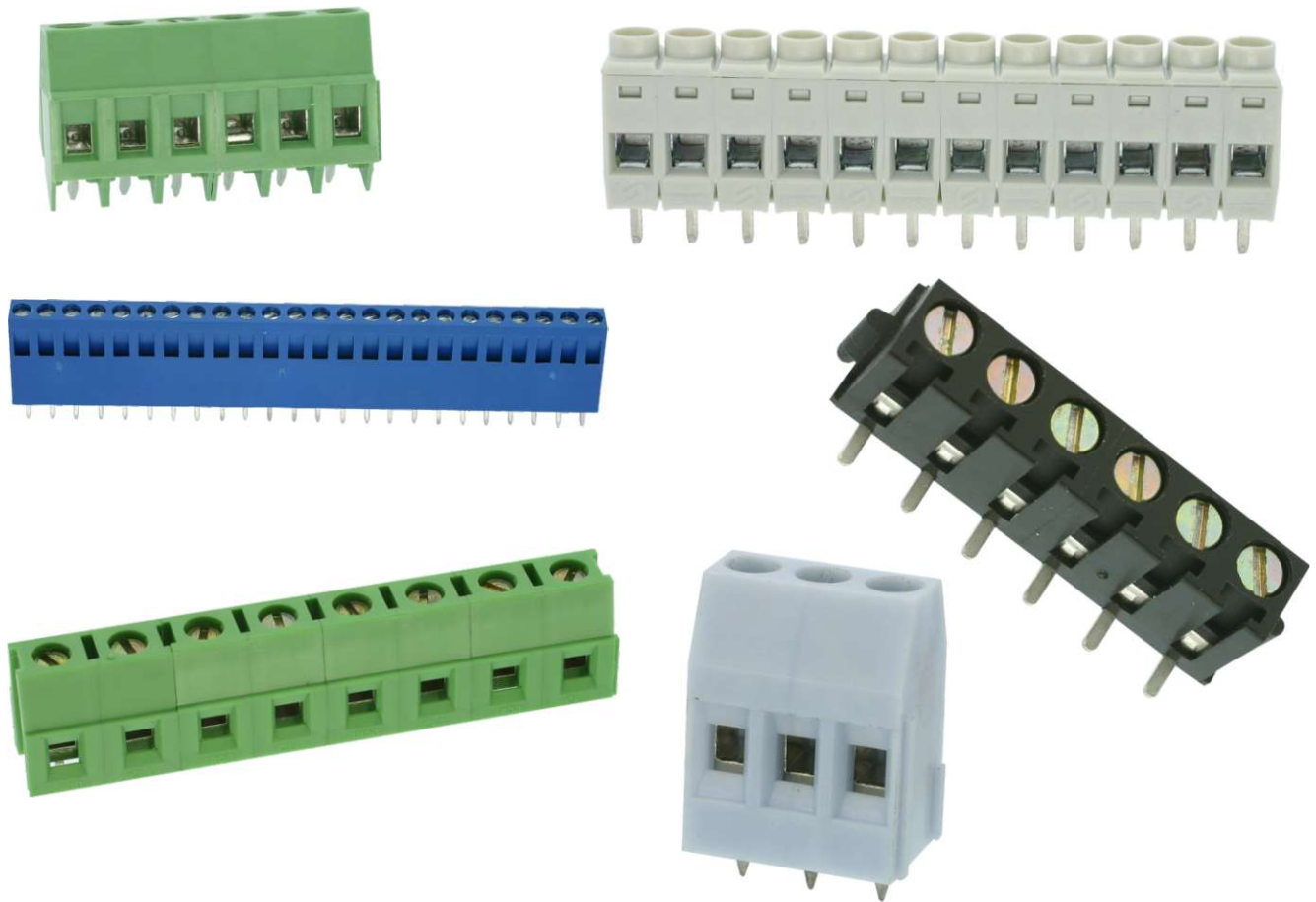


EBY ELECTRO, INC.



Electro-Mechanical Components Since 1945

CAGE CLAMP MINI-BLOCKS



EBY Electro, Inc.

210 Express Street
Plainview, NY 11803-2423 USA
© Copyright 2007 EBY Electro, Inc.



Electro-Mechanical Components Since 1945

www.ebyelectro.com

Email: info@ebyelectro.com

Tel: 516.576.7777 · Fax: 516.576.1414

EB251

5mm SPACING, CAGE CLAMP, MINI BLOCKS

TECHNICAL DATA

MECHANICAL

Torque:

3.5 lbs-in. Max.

Operating temperature:

-33°C to +120°C

-27°F to +248°F

Soldering temperature:

260°C, 500°F for 5 seconds max

MATERIAL

Contact:

Brass, Tin Plated

Contact Solder Pin:

Brass, Tin Plated

Screw:

M2.5, Steel, Zinc Plated

Insulator body:

Polyamide, UL 94V-0, Black

ELECTRICAL

Voltage rating:

300VAC

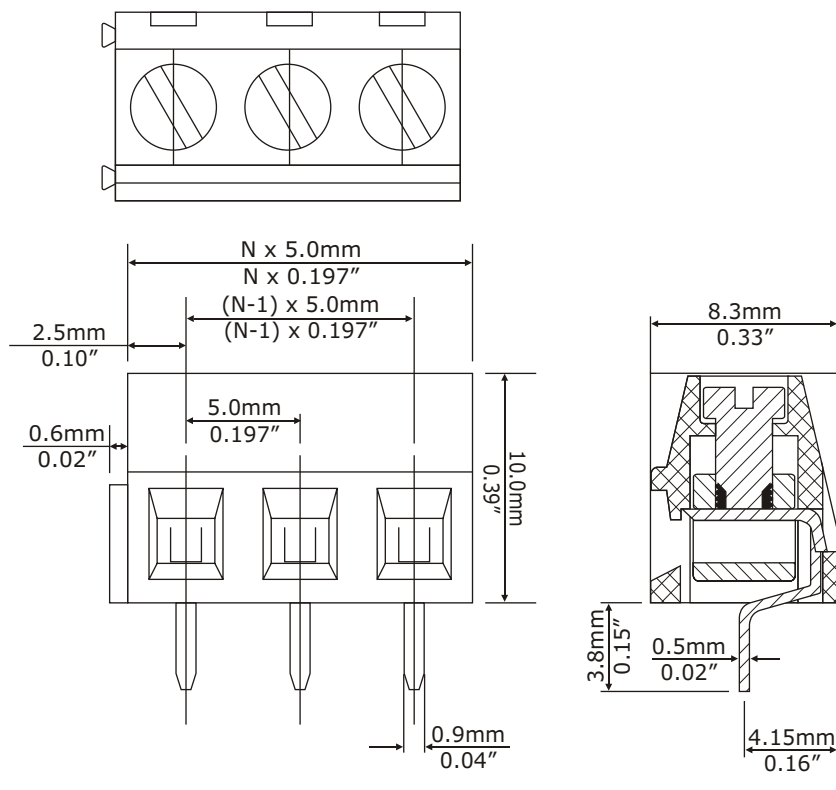
Current rating:

10 Amps

Wire range:

16-26AWG

DIMENSIONAL REFERENCE



Safety Approval:



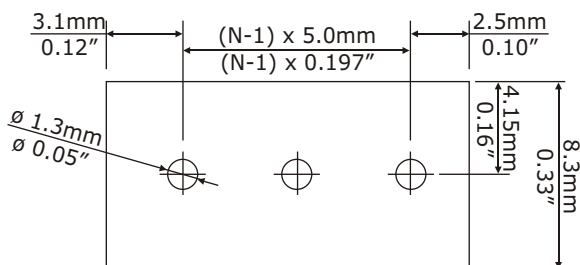
PART NUMBERING

Part Number / Ordering Information

EB251-XX-000

NUMBER OF
POSITIONS

P.C.B. LAYOUT



If you require marking or printing on your parts, contact EB251 - we can provide blocks to your exact specifications.

N = Number of contacts

EBY Electro, Inc.

210 Express Street
Plainview, NY 11803-2423 USA

© Copyright 2007 EBY Electro, Inc.



Electro-Mechanical Components Since 1945

www.ebyelectro.com

Email: info@ebyelectro.com

Tel: 516.576.7777 · Fax: 516.576.1414

EB258

5.08mm SPACING, CAGE CLAMP, MINI BLOCK

TECHNICAL DATA

MECHANICAL

Torque:
3.5 lbs-in. Max.
Operating temperature:
-33°C to +120°C
-27°F to +248F
Soldering temperature:
260°C, 500°F for 5 seconds max

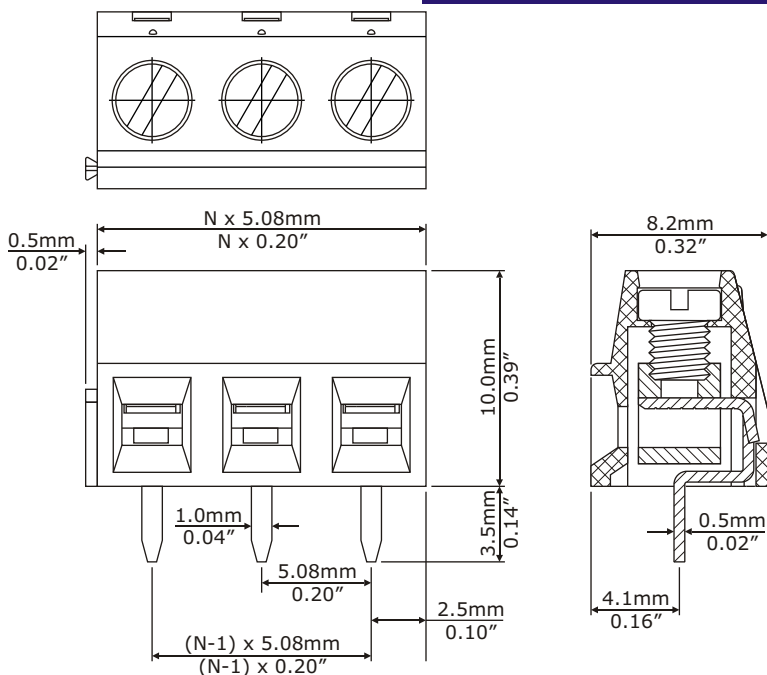
MATERIAL

Contact:
Brass, Tin Plated
Contact Solder Pin:
Brass, Tin Plated
Screw:
M2.5, Steel, Zinc Plated
Insulator body:
Polyamide, UL 94V-0, Green

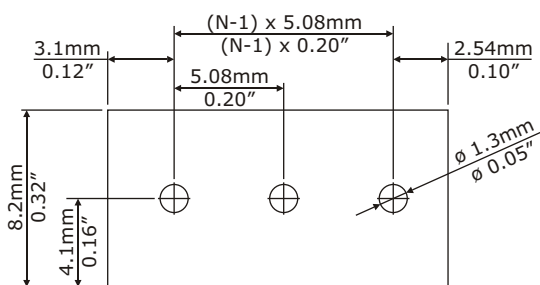
ELECTRICAL

Voltage rating:
300VAC
Current rating:
10 Amps
Wire range:
16-26AWG

DIMENSIONAL REFERENCE



P.C.B. LAYOUT



N = Number of contacts

Safety Approval:



PART NUMBERING

EB258-XX

NUMBER OF
POSITIONS

If you require marking or printing on your parts, contact EBY - we can provide blocks to your exact specifications.

EB300

5mm SPACING, 45° ENTRY, CAGE CLAMP, MINI BLOCK

TECHNICAL DATA

MECHANICAL

Operating temperature:

-33°C to +120°C

-27°F to +248°F

Soldering temperature:

260°C, 500°F for 5 seconds max

MATERIAL

Contact Block:

Brass, Tin Plated

Contact Solder Pin:

Brass, Tin Plated

Screw:

M2.5, Steel, Zinc Plated &

Captive

Insulator body:

Polyamide, UL 94V-0, Blue

ELECTRICAL

Voltage rating:

300VAC

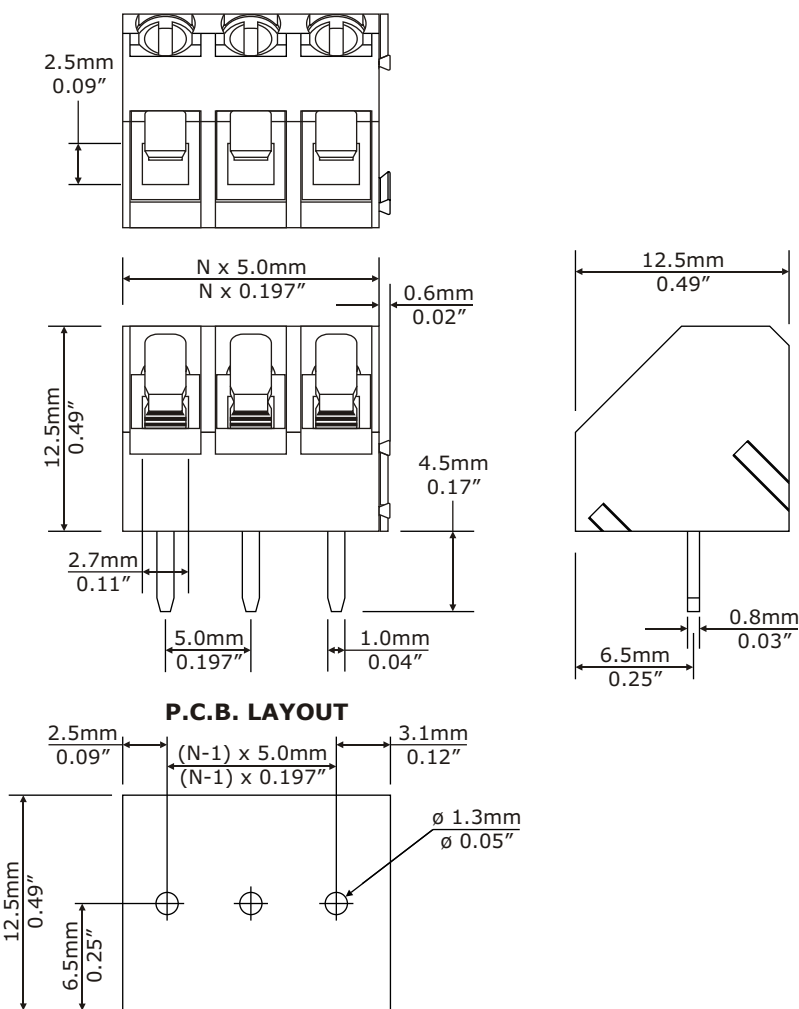
Current rating:

15 Amps

Wire Range:

12-24AWG

DIMENSIONAL REFERENCE



N = Number of contacts



Safety Approval:



PART NUMBERING

EB300-XX

NUMBER OF POSITIONS

If you require marking or printing on your parts, contact EBY - we can provide blocks to your exact specifications.

EBY Electro, Inc.

210 Express Street
Plainview, NY 11803-2423 USA

© Copyright 2007 EBY Electro, Inc.



Electro-Mechanical Components Since 1945

www.ebyelectro.com

Email: info@ebyelectro.com

Tel: 516.576.7777 · Fax: 516.576.1414

EB300 High Temp.

5.0mm SPACING, 45° ENTRY, CAGE CLAMP, MINI BLOCK

TECHNICAL DATA

MECHANICAL

Operating temperature:

-33°C to +120°C

-27°F to +248°F

Soldering temperature:

260°C, 500°F max. for 10 seconds.

Suitable for reflow.

MATERIAL

Contact Block:

Brass, Tin Plated

Contact Solder Pin:

Brass, Tin Plated

Screw:

M2.5, Steel, Zinc Plated &

Captive

Insulator body:

Polyamide, N46, UL 94V-0, Black

ELECTRICAL

Voltage rating:

300VAC

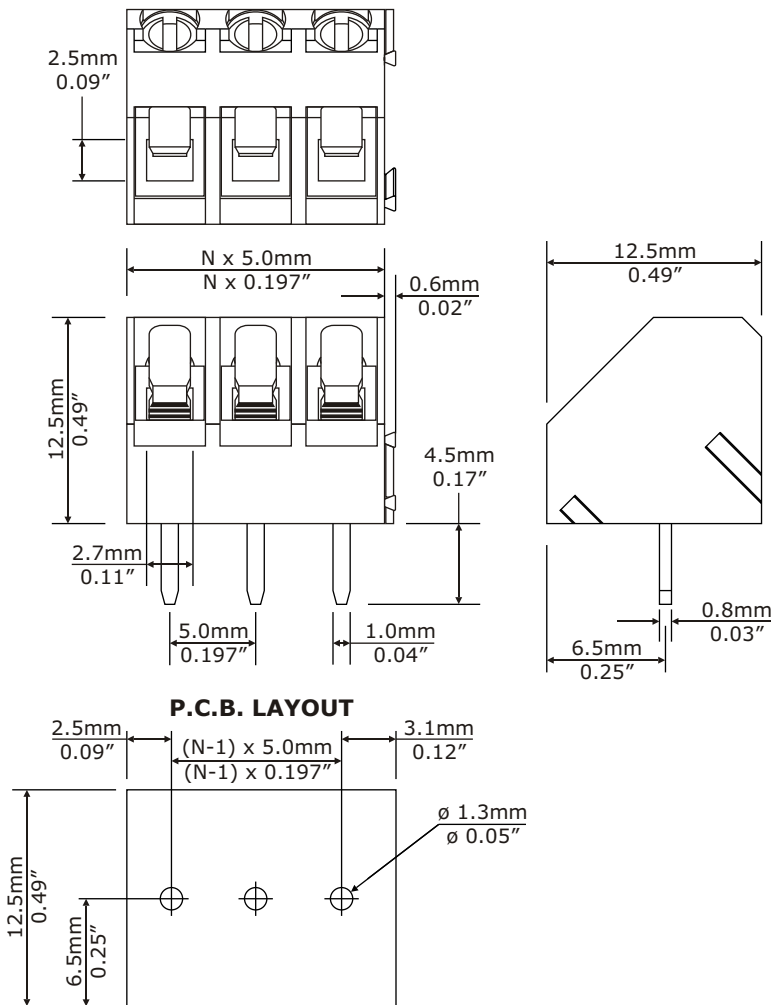
Current rating:

15 Amps

Wire Range:

12-24AWG

DIMENSIONAL REFERENCE



N = Number of contacts



Safety Approval:



PART NUMBERING

EB300-XX-HT

NUMBER OF POSITIONS

If you require marking or printing on your parts, contact EBY - we can provide blocks to your exact specifications.

EB320

5.0mm SPACING, 45° ENTRY, CAGE CLAMP, MINI BLOCK

TECHNICAL DATA

MECHANICAL

Operating temperature:

-33°C to +120°C

-27°F to +248°F

Soldering temperature:

260°C, 500°F for 5 seconds max.

MATERIAL

Contact Block:

Brass, Tin Plated

Contact Solder Pin:

Brass, Tin Plated

Screw:

M2.5, Steel, Zinc Plated &

Captive

Insulator body:

Polyamide, UL 94V-0, Black

ELECTRICAL

Voltage rating:

300VAC

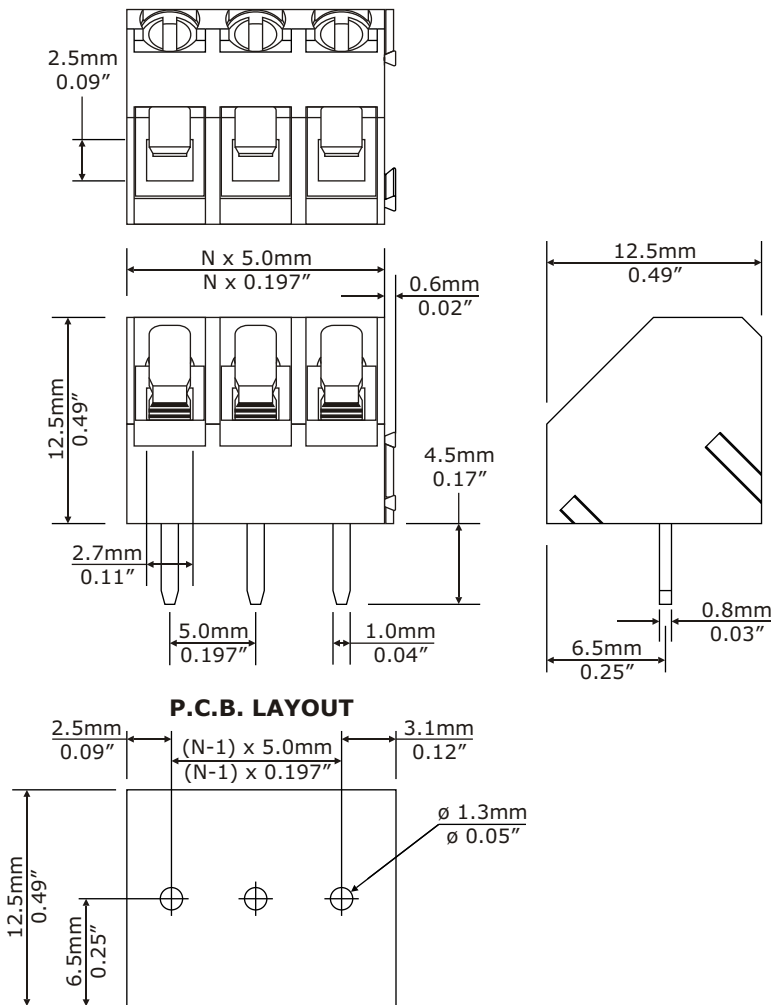
Current rating:

15 Amps

Wire Range:

12-24AWG

DIMENSIONAL REFERENCE



N = Number of contacts



Safety Approval:



PART NUMBERING

EB320-XX

NUMBER OF POSITIONS

If you require marking or printing on your parts, contact EBY - we can provide blocks to your exact specifications.

EB345

5mm SPACING, 35° ENTRY CAGE CLAMP, MINI BLOCK

TECHNICAL DATA

MECHANICAL

Torque:

3.5 lbs-in. Max.

Operating temperature:

-33°C to +120°C

-27°F to +248F

Soldering temperature:

260°C, 500°F for 5 seconds max

MATERIAL

Contact:

Brass, Tin Plated

Contact Solder Pin:

Brass, Tin Plated

Screw:

M2.5, Steel, Zinc Plated, Slotted

Insulator body:

Polyamide, UL 94V-0, Green

ELECTRICAL

Voltage rating:

300VAC

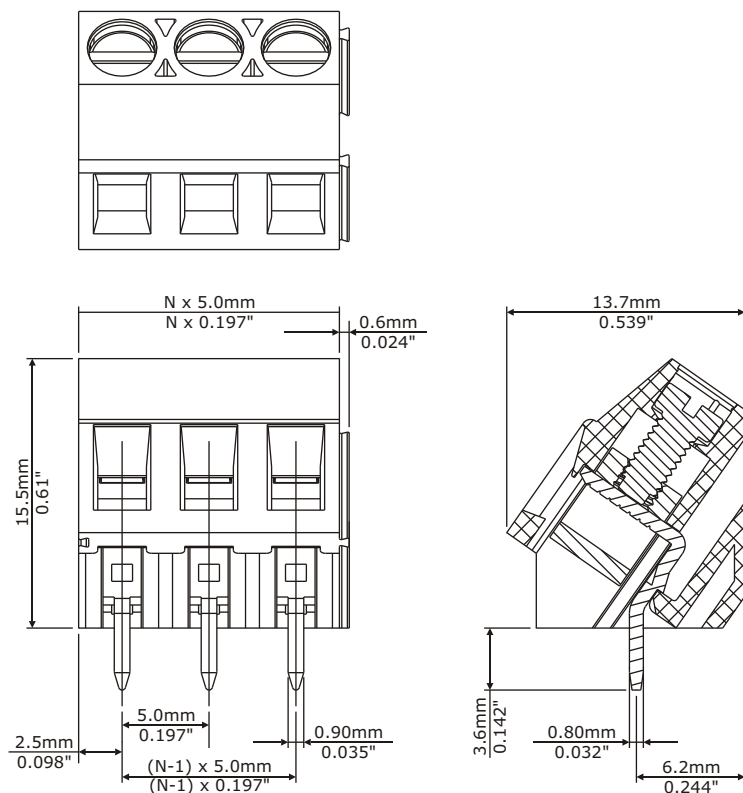
Current rating:

10 Amps

Wire range:

12-24AWG

DIMENSIONAL REFERENCE



Safety Approval:

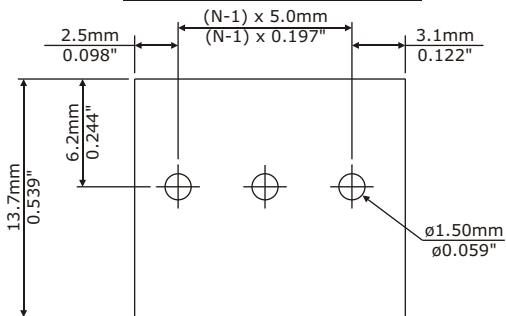


PART NUMBERING

EB345-XX-500

NUMBER OF
POSITIONS

RECOMMENDED PCB LAYOUT



N = Number of contacts

If you require marking or printing on your parts, contact EBY - we can provide blocks to your exact specifications.

EBY Electro, Inc.

210 Express Street
Plainview, NY 11803-2423 USA

© Copyright 2007 EBY Electro, Inc.



Electro-Mechanical Components Since 1945

www.ebyelectro.com

Email: info@ebyelectro.com

Tel: 516.576.7777 · Fax: 516.576.1414

EB346

5.08mm SPACING, 35° ENTRY CAGE CLAMP, MINI BLOCK

TECHNICAL DATA

MECHANICAL

Torque:

3.5 lbs-in. Max.

Operating temperature:

-33°C to +120°C

-27°F to +248F

Soldering temperature:

260°C, 500°F for 5 seconds max

MATERIAL

Contact:

Brass, Tin Plated

Contact Solder Pin:

Brass, Tin Plated

Screw:

M2.5, Steel, Zinc Plated, Slotted

Insulator body:

Polyamide, UL 94V-0, Green

ELECTRICAL

Voltage rating:

300VAC

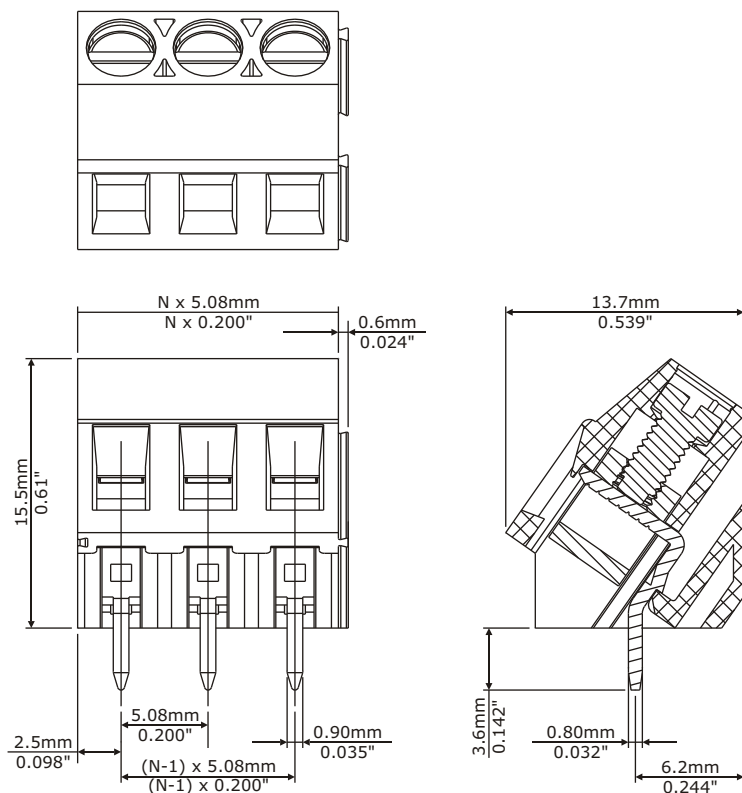
Current rating:

10 Amps

Wire range:

12-24AWG

DIMENSIONAL REFERENCE



Safety Approval:

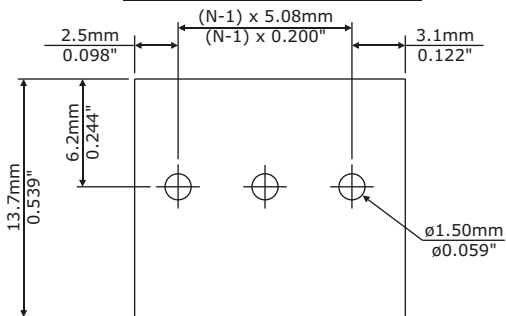


PART NUMBERING

EB346-XX-500

NUMBER OF POSITIONS

RECOMMENDED PCB LAYOUT



N = Number of contacts

If you require marking or printing on your parts, contact EB346 - we can provide blocks to your exact specifications.

EBY Electro, Inc.

210 Express Street
Plainview, NY 11803-2423 USA
© Copyright 2003 EB346 Electro, Inc.



Electro-Mechanical Components Since 1945

www.ebyelectro.com

Email: info@ebyelectro.com

Tel: 516.576.7777 · Fax: 516.576.1414

EB350

5mm SPACING, CAGE CLAMP MINI BLOCK

TECHNICAL DATA

MECHANICAL

Torque:

5 lbs-in. Max.

Operating temperature:

-33°C to +120°C

-27°F to +248°F

Soldering temperature:

260°C, 500°F for 5 seconds max

MATERIAL

Contact Block:

Steel Stamping, Zinc Plated

Contact Solder Pin:

Brass, Tin Plated

Screw:

M2.5, Steel, Zinc Plated

Insulator body:

Polycarbonate, UL 94V-0, Grey

ELECTRICAL

Voltage rating:

300VAC

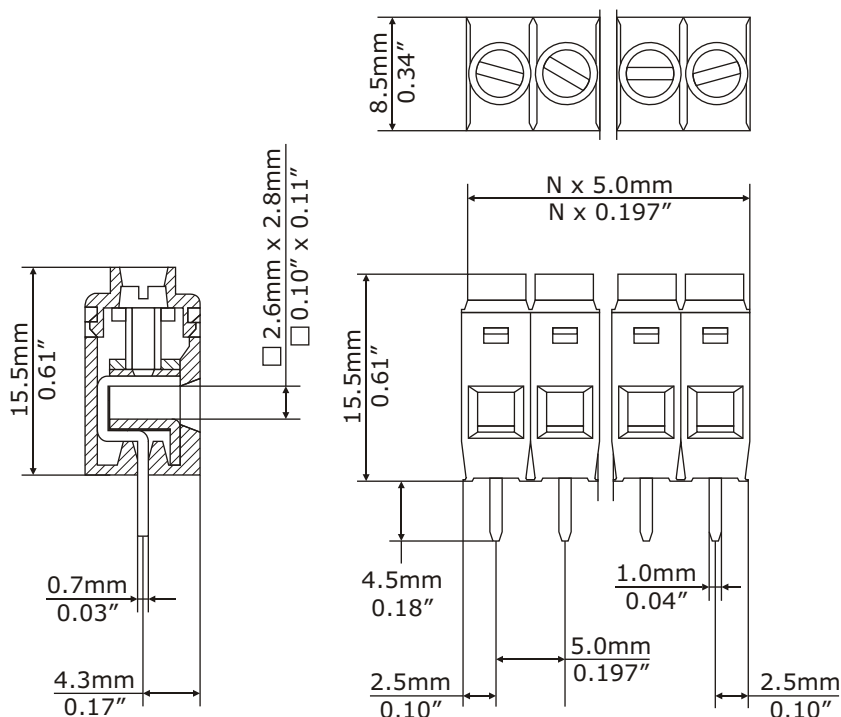
Current rating:

15 Amps

Wire range:

12-22AWG

DIMENSIONAL REFERENCE



Safety Approval:



PART NUMBERING

EB350-XX

NUMBER OF
POSITIONS
36 Maximum

RECOMMENDED P.C.B. HOLE SIZE: 1.3mm (0.05")

N = Number of contacts

If you require marking or printing on your parts, contact EBY - we can provide blocks to your exact specifications.

EBY Electro, Inc.

210 Express Street
Plainview, NY 11803-2423 USA

© Copyright 2007 EBY Electro, Inc.



Electro-Mechanical Components Since 1945

www.ebyelectro.com

Email: info@ebyelectro.com

Tel: 516.576.7777 · Fax: 516.576.1414

EB355

5mm SPACING, CAGE CLAMP, HORIZONTAL MINI BLOCK

TECHNICAL DATA

MECHANICAL

Torque:

5 lbs-in. Max.

Operating temperature:

-33°C to +120°C

-27°F to +248°F

Soldering temperature:

260°C, 500°F for 5 seconds max

MATERIAL

Contact Block:

Steel Stamping, Zinc Plated

Contact Solder Pin:

Brass, Tin Plated

Screw:

M2.5, Steel, Zinc Plated

Insulator body:

Polycarbonate, UL 94V-0, Grey

ELECTRICAL

Voltage rating:

300VAC

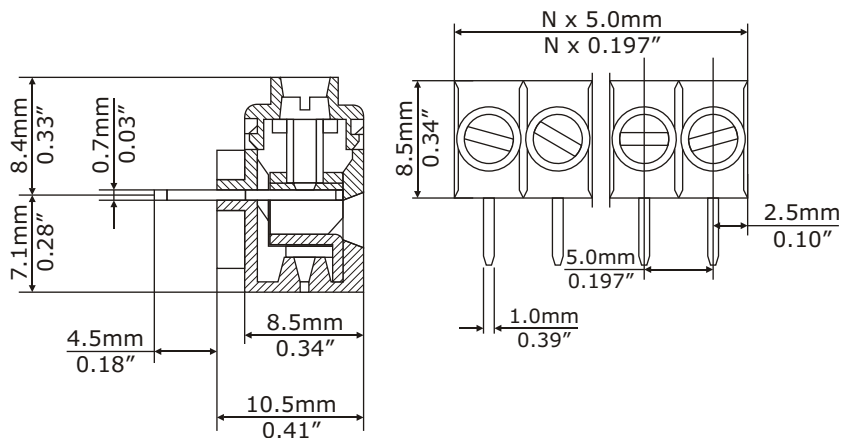
Current rating:

15 Amps

Wire range:

12-22AWG

DIMENSIONAL REFERENCE



Safety Approval:



PART NUMBERING

EB355-XX

NUMBER OF
POSITIONS
36 Maximum

RECOMMENDED P.C.B. HOLE SIZE: 1.3mm (0.05")

N = Number of contacts

If you require marking or printing on your parts, contact EB355 - we can provide blocks to your exact specifications.

EBY Electro, Inc.

210 Express Street
Plainview, NY 11803-2423 USA
© Copyright 2007 EBY Electro, Inc.



Electro-Mechanical Components Since 1945

www.ebyelectro.com

Email: info@ebyelectro.com

Tel: 516.576.7777 · Fax: 516.576.1414

EB630

3.5mm SPACING, CAGE CLAMP, MINI BLOCKS

TECHNICAL DATA

MECHANICAL

Torque:

3.5 lbs-in. Max.

Operating temperature:

-33°C to +120°C

-27°F to +248°F

Soldering temperature:

260°C, 500°F for 5 seconds max

MATERIAL

Contact:

Brass, Tin Plated

Contact Solder Pin:

Brass, Tin Plated

Screw:

M2.5, Steel, Zinc Plated

Insulator body:

Polyamide, UL 94V-0, Green

ELECTRICAL

Voltage rating:

300VAC

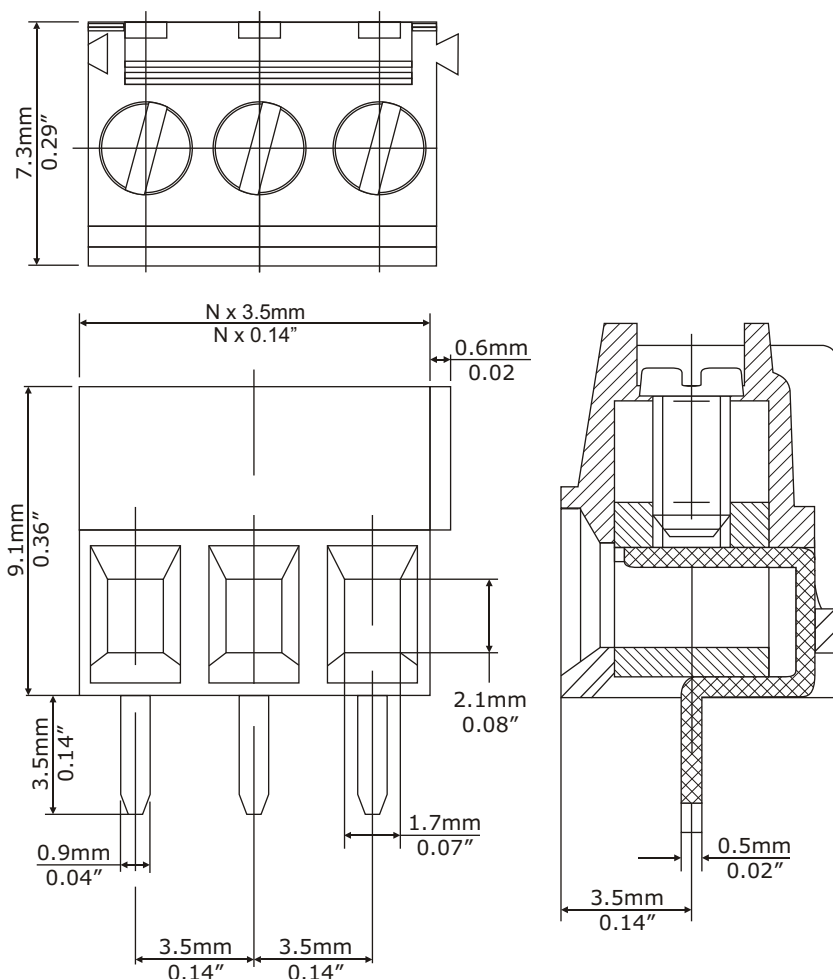
Current rating:

10 Amps

Wire range:

16-26AWG

DIMENSIONAL REFERENCE



N = Number of contacts



Safety Approval:



PART NUMBERING

EB630-XX

NUMBER OF
POSITIONS

If you require marking or printing on your parts, contact EBY - we can provide blocks to your exact specifications.

EBY Electro, Inc.

210 Express Street
Plainview, NY 11803-2423 USA

© Copyright 2007 EBY Electro, Inc.



Electro-Mechanical Components Since 1945

www.ebyelectro.com

Email: info@ebyelectro.com

Tel: 516.576.7777 · Fax: 516.576.1414

EB635

3.5mm SPACING, CAGE CLAMP MINI BLOCKS

TECHNICAL DATA

MECHANICAL

Torque:

3.5 lbs-in. Max.

Operating temperature:

-33°C to +120°C

-27°F to +248°F

Soldering temperature:

260°C, 500°F for 5 seconds max

MATERIAL

Contact:

Brass, Tin Plated

Contact Solder Pin:

Brass, Tin Plated

Screw:

M2.5, Steel, Zinc Plated

Insulator body:

Polyamide, UL 94V-0, Green

ELECTRICAL

Voltage rating:

300VAC

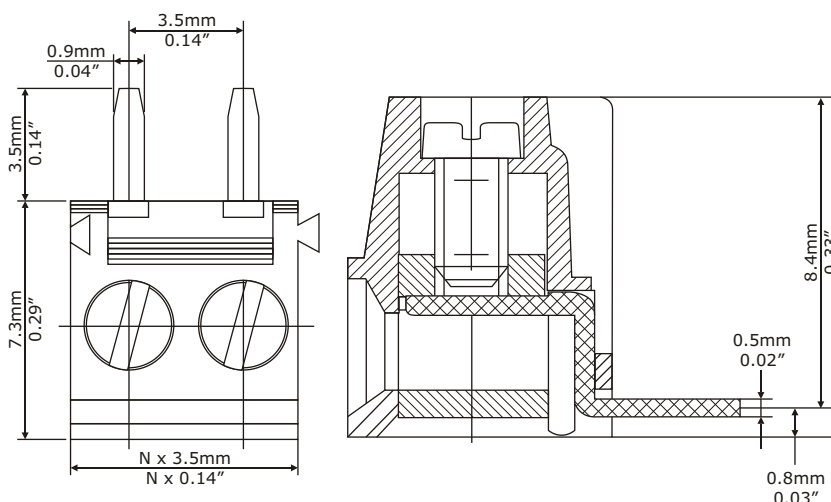
Current rating:

10 Amps

Wire range:

16-26AWG

DIMENSIONAL REFERENCE



Safety Approval:



PART NUMBERING

EB635-XX

NUMBER OF
POSITIONS

RECOMMENDED P.C.B. HOLE SIZE: 1.3mm (0.05")

N = Number of contacts

If you require marking or printing on your parts, contact EBY - we can provide blocks to your exact specifications.

EBY Electro, Inc.

210 Express Street
Plainview, NY 11803-2423 USA

© Copyright 2007 EBY Electro, Inc.



Electro-Mechanical Components Since 1945

www.ebyelectro.com

Email: info@ebyelectro.com

Tel: 516.576.7777 · Fax: 516.576.1414

EB638

3.81mm, CAGE CLAMP, MINI BLOCK

TECHNICAL DATA

MECHANICAL

Torque:

3.5 lbs-in. Max.

Operating temperature:

-33°C to +120°C

-27°F to +248°F

Soldering temperature:

260°C, 500°F for 5 seconds max

MATERIAL

Contact:

Brass, Tin Plated

Contact Solder Pin:

Brass, Tin Plated

Screw:

M2, Steel, Zinc Plated

Insulator body:

Polyamide, UL 94V-0, Green

ELECTRICAL

Voltage rating:

150VAC

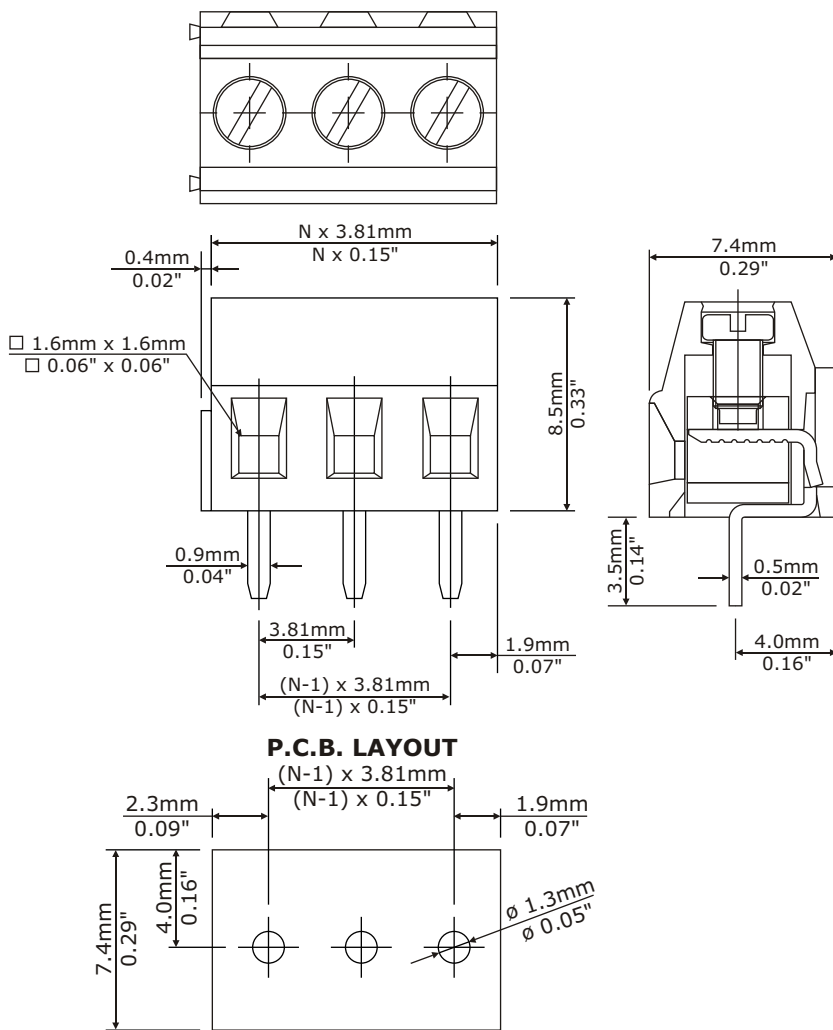
Current rating:

6 Amps

Wire range:

16-26AWG

DIMENSIONAL REFERENCE



Safety Approval:



PART NUMBERING

EB638-XX

NUMBER OF
POSITIONS

If you require marking or printing on your parts, contact EBY - we can provide blocks to your exact specifications.

N = Number of contacts

EBY Electro, Inc.

210 Express Street
Plainview, NY 11803-2423 USA

© Copyright 2007 EBY Electro, Inc.



Electro-Mechanical Components Since 1945

www.ebyelectro.com

Email: info@ebyelectro.com

Tel: 516.576.7777 · Fax: 516.576.1414

VERTICAL EB700

5mm SPACING, CAGE CLAMP, MINI BLOCKS

TECHNICAL DATA

MECHANICAL

Torque:
4.0 lbs-in Max.
Operating temperature:
-33°C to +120°C
-27°F to +248°F
Soldering temperature:
260°C, 500°F for 5 seconds max

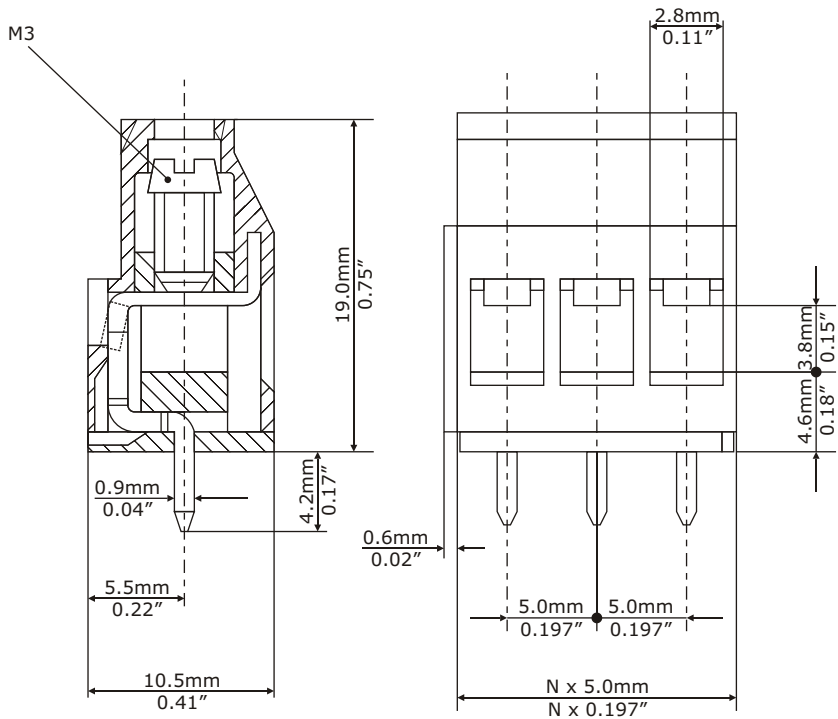
MATERIAL

Contact:
Brass, Nickel Plated
Contact Solder Pin:
Brass, Tin Plated
Screw:
M3, Steel, Zinc Plated
Insulator body:
Polyamide, UL 94V-0, Blue

ELECTRICAL

Voltage rating:
300VAC
Current rating:
20 Amps
Wire Range:
12-22AWG

DIMENSIONAL REFERENCE



Safety Approval:



PART NUMBERING

EB700-XX

NUMBER OF POSITIONS

RECOMMENDED P.C.B. HOLE SIZE: 1.5mm (0.060")

N = Number of contacts

If you require marking or printing on your parts, contact EB700 - we can provide blocks to your exact specifications.

HORIZONTAL EB705

5mm SPACING, CAGE CLAMP, MINI BLOCK

TECHNICAL DATA

MECHANICAL

Torque:

4.0 lbs-in. Max

Operating temperature:

-33°C to +120°C

-27°F to +248°F

Soldering temperature:

260°C, 500°F for 5 seconds max

MATERIAL

Contact Block:

Brass, Nickel Plated

Contact Solder Pin:

Brass, Tin Plated

Screw:

M3, Steel, Zinc Plated

Insulator body:

Polyamide, UL 94V-0, Blue

ELECTRICAL

Voltage rating:

300VAC

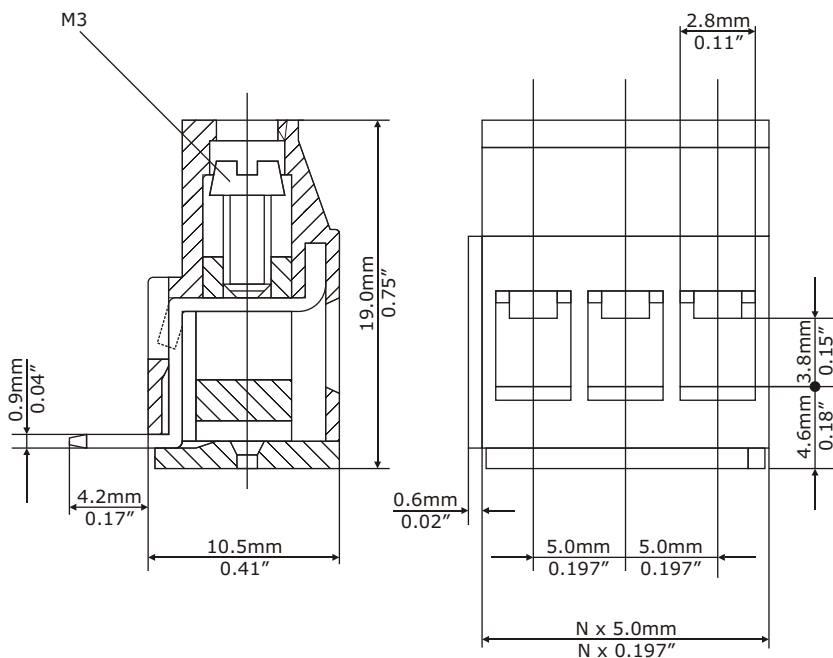
Current rating:

20 Amps

Wire Range:

12-22AWG

DIMENSIONAL REFERENCE



Safety Approval:



PART NUMBERING

EB705-XX

NUMBER OF POSITIONS

RECOMMENDED P.C.B. HOLE SIZE: 1.5mm (0.060")

N = Number of contacts

If you require marking or printing on your parts, contact EBY - we can provide blocks to your exact specifications.

EBY Electro, Inc.

210 Express Street
Plainview, NY 11803-2423 USA

© Copyright 2007 EBY Electro, Inc.



Electro-Mechanical Components Since 1945

www.ebyelectro.com

Email: info@ebyelectro.com

Tel: 516.576.7777 · Fax: 516.576.1414

EB710

7.5mm SPACING, CAGE CLAMP, MINI BLOCKS

TECHNICAL DATA

MECHANICAL

Torque:

4.0 lbs-in. Max.

Operating temperature:

-33°C to +120°C

-27°F to +248F

Soldering temperature:

260°C, 500°F for 5 seconds max

MATERIAL

Contact Block:

Brass, Nickel Plated

Contact Solder Pin:

Brass, Tin Plated

Screw:

M3, Steel, Zinc Plated

Insulator body:

Polyamide, UL 94V-0, Green

ELECTRICAL

Voltage rating:

300VAC

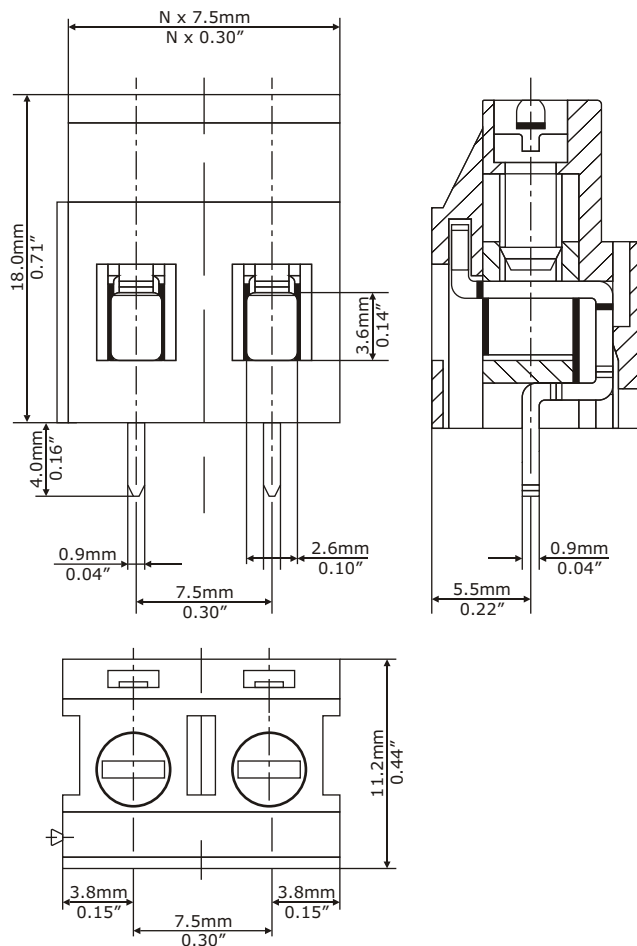
Current rating:

15 Amps

Wire Range:

12-24AWG

DIMENSIONAL REFERENCE



Safety Approval:



PART NUMBERING

EB710-XX

NUMBER OF
POSITIONS

RECOMMENDED P.C.B. HOLE SIZE: 1.5mm (0.060")

N = Number of contacts

EB715

7.5mm SPACING, CAGE CLAMP MINI BLOCKS

TECHNICAL DATA

MECHANICAL

Torque:

4.0 lbs-in. Max.

Operating temperature:

-33°C to +120°C

-27°F to +248F

Soldering temperature:

260°C, 500°F for 5 seconds max

MATERIAL

Contact:

Brass, Nickel Plated

Contact Solder Pin:

Brass, Tin Plated

Screw:

M3, Steel, Zinc Plated

Insulator body:

Polyamide, UL 94V-0, Green

ELECTRICAL

Voltage rating:

300VAC

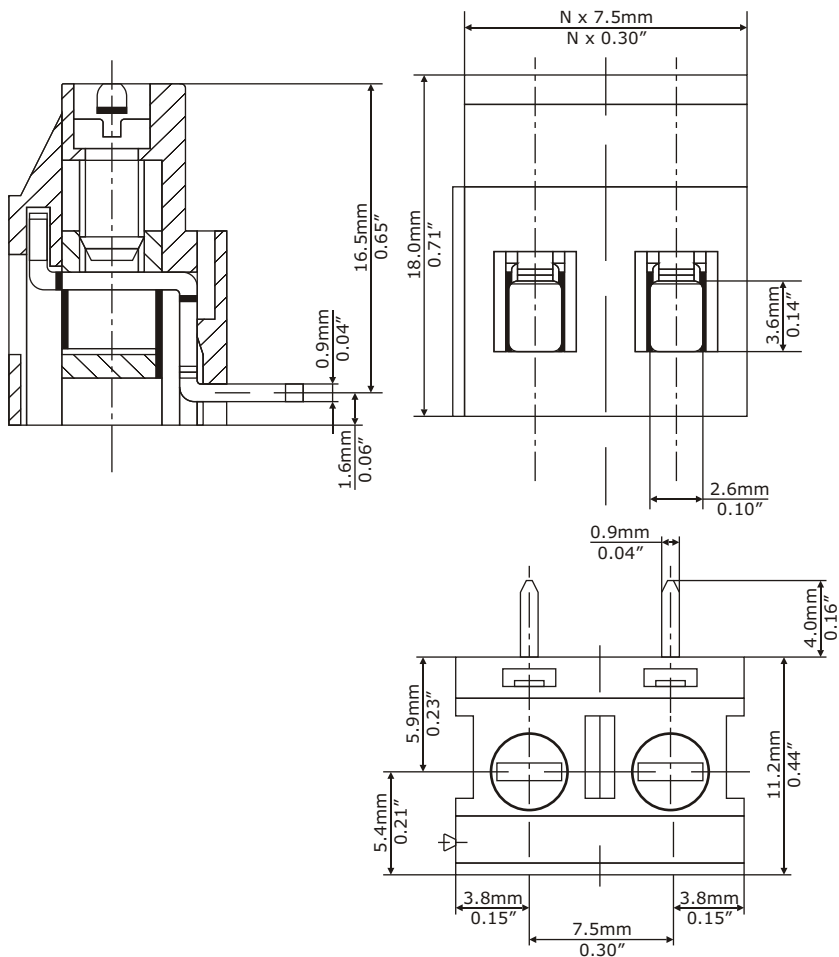
Current rating:

15 Amps

Wire Range:

12-24AWG

DIMENSIONAL REFERENCE



Safety Approval:



PART NUMBERING

EB715-XX

NUMBER OF
POSITIONS

RECOMMENDED P.C.B. HOLE SIZE: 1.5mm (0.060")

N = Number of contacts

EBY Electro, Inc.

210 Express Street
Plainview, NY 11803-2423 USA

© Copyright 2007 EBY Electro, Inc.



Electro-Mechanical Components Since 1945

www.ebyelectro.com

Email: info@ebyelectro.com

Tel: 516.576.7777 · Fax: 516.576.1414

EB746

6.35mm SPACING, CAGE CLAMP MINI BLOCKS, PC MOUNT

TECHNICAL DATA

MECHANICAL

Torque:

5.0 lbs-in. Max.

Operating temperature:

-33°C to +120°C

-27°F to +248°F

Soldering temperature:

260°C, 500°F for 5 seconds max

MATERIAL

Contact Block:

Brass, Tin Plated

Contact Solder Pin:

Brass, Tin Plated

Screw:

M3, Steel, Zinc Plated

Insulator body:

Polyamide, UL 94V-0, Green

ELECTRICAL

Voltage rating:

300VAC

Current rating:

25 Amps

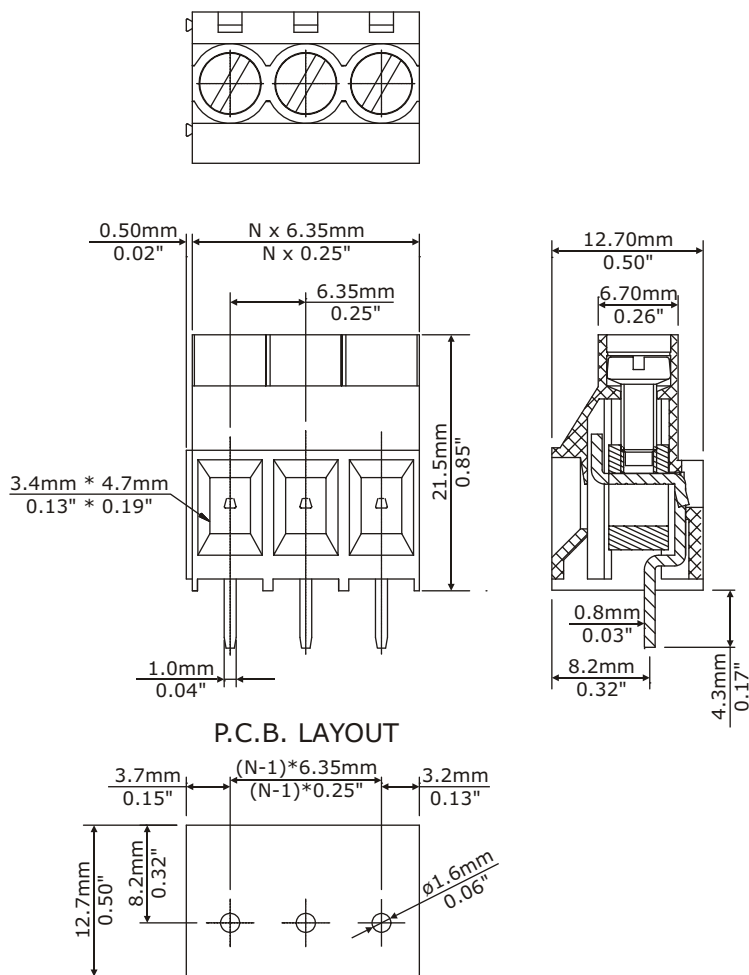
Withstand Voltage:

1500VAC, Test time 60 sec.

Wire Range:

10-24AWG

DIMENSIONAL REFERENCE



N = Number of contacts



Safety Approval:



PART NUMBERING

EB746-XX-500

NUMBER OF
POSITIONS

EB747

7.62mm SPACING, CAGE CLAMP MINI BLOCKS

TECHNICAL DATA

MECHANICAL

Torque:

5.0 lbs-in. Max.

Operating temperature:

-33°C to +120°C

-27°F to +248°F

Soldering temperature:

260°C, 500°F for 5 seconds max

MATERIAL

Contact Block:

Brass, Tin Plated

Contact Solder Pin:

Brass, Tin Plated

Screw:

M3, Steel, Zinc Plated

Insulator body:

Polyamide, UL 94V-0, Green

ELECTRICAL

Voltage rating:

300VAC

Current rating:

25 Amps

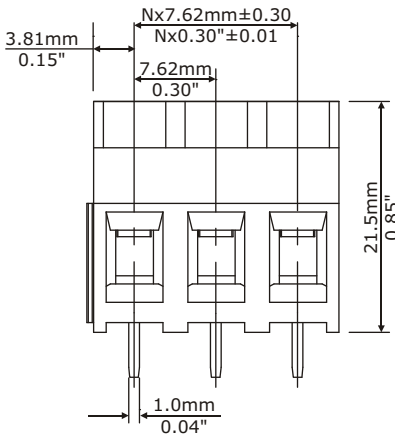
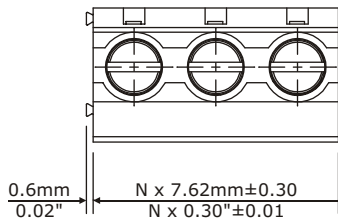
Withstand Voltage:

1500VAC, Test time 60 sec.

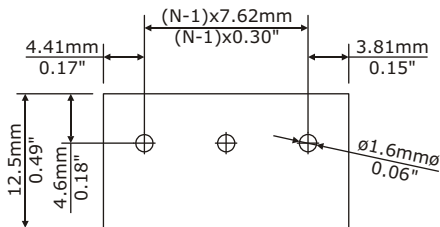
Wire Range:

10-24AWG

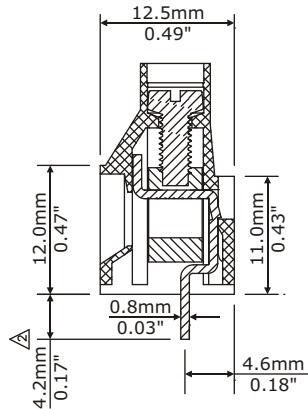
DIMENSIONAL REFERENCE



P.C.B. LAYOUT



N = Number of contacts



Safety Approval:



PART NUMBERING

EB747-XX-500

NUMBER OF
POSITIONS

EB749

9.52mm SPACING, CAGE CLAMP MINI BLOCKS

TECHNICAL DATA

MECHANICAL

Torque:

5.0 lbs-in. Max.

Operating temperature:

-33°C to +120°C

-27°F to +248F

Soldering temperature:

260°C, 500°F for 5 seconds max

MATERIAL

Contact Block:

Brass, Tin Plated

Contact Solder Pin:

Brass, Tin Plated

Screw:

M3, Steel, Zinc Plated

Insulator body:

Polyamide, UL 94V-0, Green

ELECTRICAL

Voltage rating:

300VAC

Current rating:

30 Amps

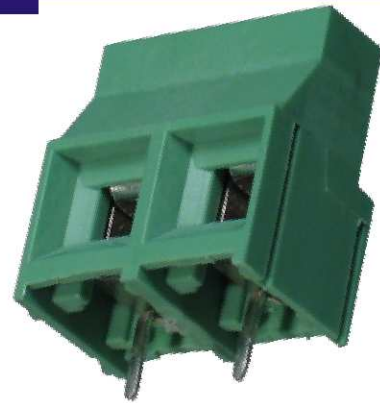
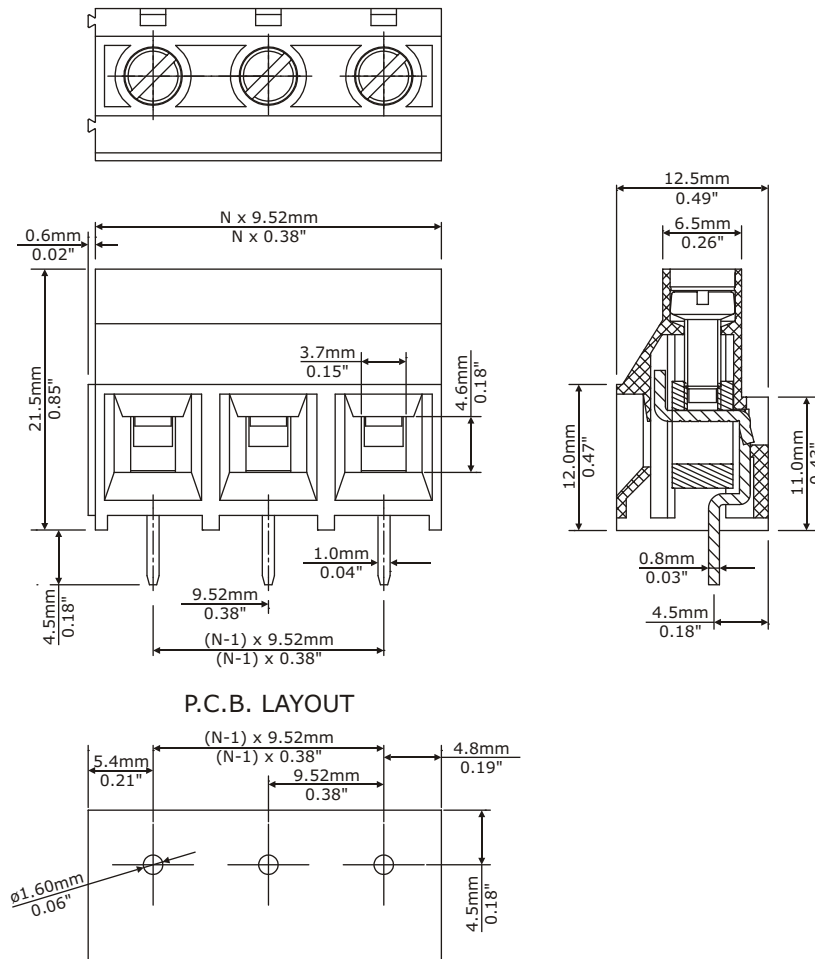
Withstand Voltage:

1500VAC, Test time 60 sec.

Wire Range:

10-24AWG

DIMENSIONAL REFERENCE



Safety Approval:



PART NUMBERING

EB749-XX-500

NUMBER OF
POSITIONS

N = Number of contacts

EB750**7.5mm SPACING, LOW PROFILE, CAGE CLAMP, MINI BLOCK****TECHNICAL DATA****MECHANICAL****Torque:**

4.0 lbs-in. Max.

Operating temperature:

-33°C to +120°C

-27°F to +248°F

Soldering temperature:

260°C, 500°F for 5 seconds max

MATERIAL**Contact Block:**

Brass, Nickel Plated

Contact Solder Pin:

Brass, Tin Plated

Screw:

M3, Steel, Zinc Plated

Insulator body:

Polyamide, UL 94V-0, Green

ELECTRICAL**Voltage rating:**

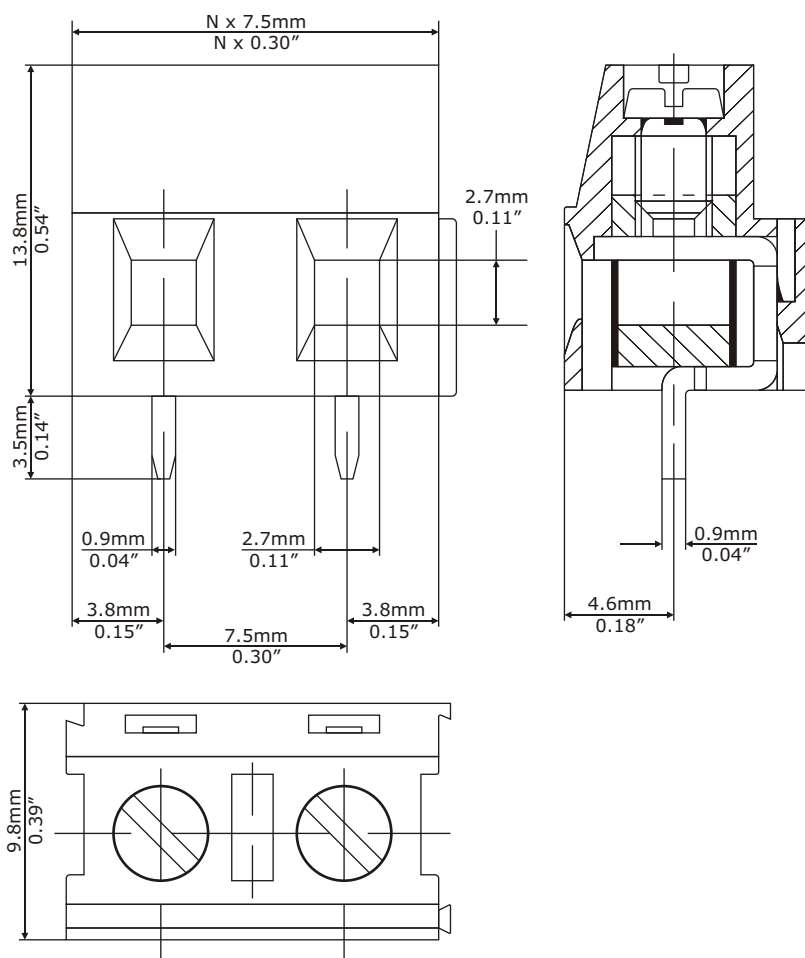
300VAC

Current rating:

15 Amps

Wire Range:

12-24AWG

DIMENSIONAL REFERENCE

Safety Approval:

**PART NUMBERING****EB750-XX**NUMBER OF
POSITIONS**RECOMMENDED P.C.B. HOLE SIZE: 1.5mm (0.060")**

N = Number of contacts

If you require marking or printing on your parts, contact EB750 - we can provide blocks to your exact specifications.

EBY Electro, Inc.

210 Express Street
Plainview, NY 11803-2423 USA

© Copyright 2007 EBY Electro, Inc.

Electro-Mechanical Components Since 1945

www.ebyelectro.comEmail: info@ebyelectro.com

Tel: 516.576.7777 · Fax: 516.576.1414

EB755**7.5mm, LOW PROFILE, CAGE CLAMP, MINI BLOCK****TECHNICAL DATA****MECHANICAL****Torque:**

4.0 lbs-in. Max.

Operating temperature:

-33°C to +120°C

-27°F to +248F

Soldering temperature:

260°C, 500°F for 5 seconds max

MATERIAL**Contact Block:**

Brass, Nickel Plated

Contact Solder Pin:

Brass, Tin Plated

Screw:

M3, Steel, Zinc Plated

Insulator body:

Polyamide, UL 94V-0, Green

ELECTRICAL**Voltage rating:**

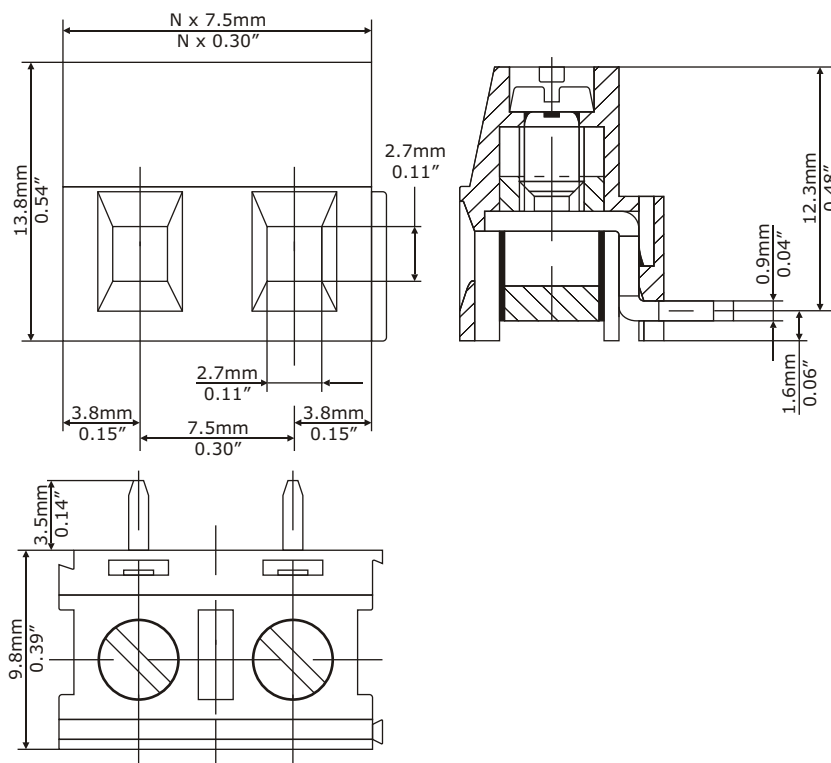
300VAC

Current rating:

15 Amps

Wire Range:

12-24AWG

DIMENSIONAL REFERENCE

Safety Approval:

**PART NUMBERING****EB755-XX**NUMBER OF
POSITIONS**RECOMMENDED P.C.B. HOLE SIZE: 1.5mm (0.060")**

N = Number of contacts

If you require marking or printing on your parts, contact EBY - we can provide blocks to your exact specifications.

EBY Electro, Inc.

210 Express Street
Plainview, NY 11803-2423 USA
© Copyright 2007 EBY Electro, Inc.

Electro-Mechanical Components Since 1945

www.ebyelectro.comEmail: info@ebyelectro.com

Tel: 516.576.7777 · Fax: 516.576.1414

EB762

7.62mm SPACING, CAGE CLAMP, MINI BLOCK

TECHNICAL DATA

MECHANICAL

Torque:

4.0 lbs-in. Max.

Operating temperature:

-33°C to +120°C

-27°F to +248F

Soldering temperature:

260°C, 500°F for 5 seconds max

MATERIAL

Contact Block:

Brass, Nickel Plated

Contact Solder Pin:

Brass, Tin Plated

Screw:

M3, Steel, Zinc Plated

Insulator body:

Polyamide, UL 94V-0, Green

ELECTRICAL

Voltage rating:

300VAC

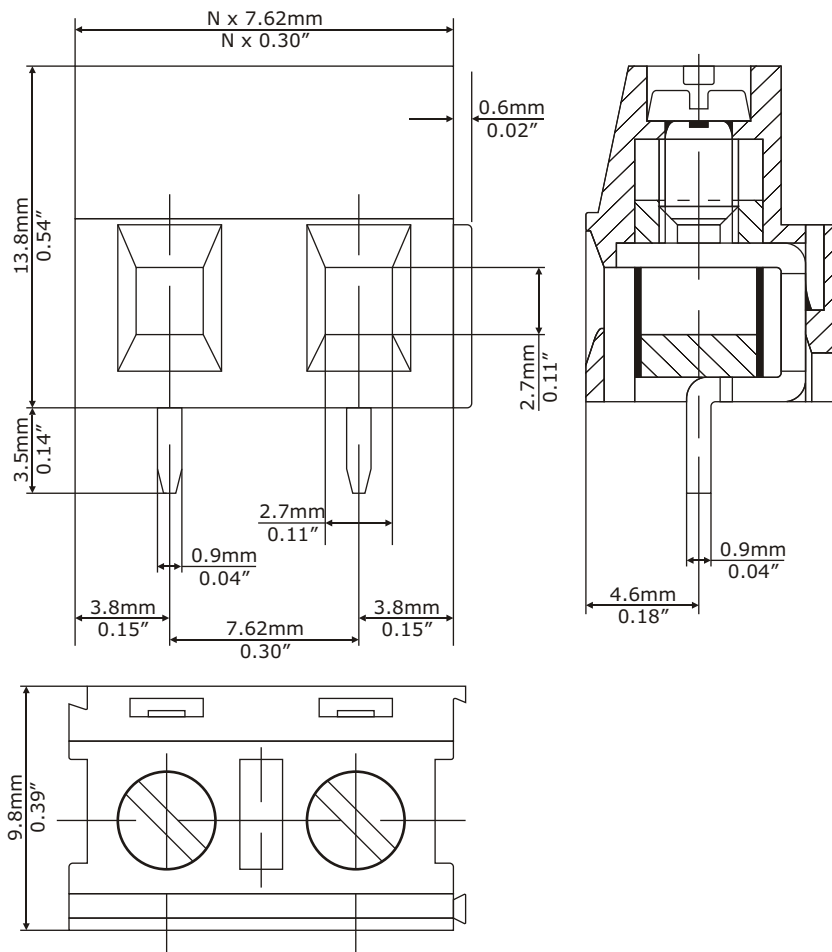
Current rating:

15 Amps

Wire Range:

12-24AWG

DIMENSIONAL REFERENCE



Safety Approval:



PART NUMBERING

EB762-XX

NUMBER OF
POSITIONS

RECOMMENDED P.C.B. HOLE SIZE: 1.5mm (0.060")

N = Number of contacts

If you require marking or printing on your parts, contact EB762 - we can provide blocks to your exact specifications.

EBY Electro, Inc.

210 Express Street
Plainview, NY 11803-2423 USA

© Copyright 2007 EBY Electro, Inc.



Electro-Mechanical Components Since 1945

www.ebyelectro.com

Email: info@ebyelectro.com

Tel: 516.576.7777 · Fax: 516.576.1414

EB765

7.62mm SPACING, CAGE CLAMP, MINI BLOCK

TECHNICAL DATA

MECHANICAL

Torque:

4.0 lbs-in. Max.

Operating temperature:

-33°C to +120°C

-27°F to +248°F

Soldering temperature:

260°C, 500°F for 5 seconds max

MATERIAL

Contact Block:

Brass, Nickel Plated

Contact Solder Pin:

Brass, Tin Plated

Screw:

M3, Steel, Zinc Plated

Insulator body:

Polyamide, UL 94V-0, Green

ELECTRICAL

Voltage rating:

300VAC

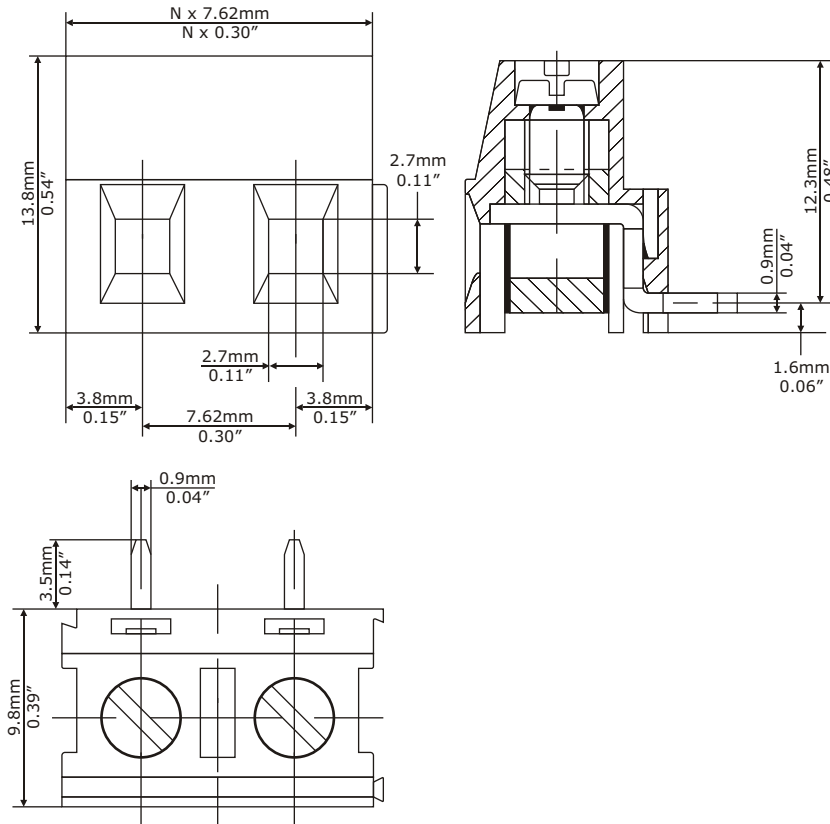
Current rating:

15 Amps

Wire Range:

12-24AWG

DIMENSIONAL REFERENCE



Safety Approval:



PART NUMBERING

EB765-XX

NUMBER OF
POSITIONS

RECOMMENDED P.C.B. HOLE SIZE: 1.5mm (0.060")

N = Number of contacts

If you require marking or printing on your parts, contact EB765 - we can provide blocks to your exact specifications.

EBY Electro, Inc.

210 Express Street
Plainview, NY 11803-2423 USA
© Copyright 2007 EBY Electro, Inc.



Electro-Mechanical Components Since 1945

www.ebyelectro.com

Email: info@ebyelectro.com

Tel: 516.576.7777 · Fax: 516.576.1414

EB779

9.52mm SPACING, CAGE CLAMP, MINI BLOCK, 45°

TECHNICAL DATA

MECHANICAL

Torque:

5.0 lbs-in. Max.

Operating temperature:

-33°C to +120°C

-27°F to +248°F

Soldering temperature:

260°C, 500°F for 5 seconds max

MATERIAL

Contact Block:

Brass, Tin Plated

Contact Solder Pin:

Brass, Tin Plated

Screw:

M3, Steel, Zinc Plated

Insulator body:

Polyamide, UL 94V-0, Green

ELECTRICAL

Voltage rating:

300VAC

Current rating:

30 Amps

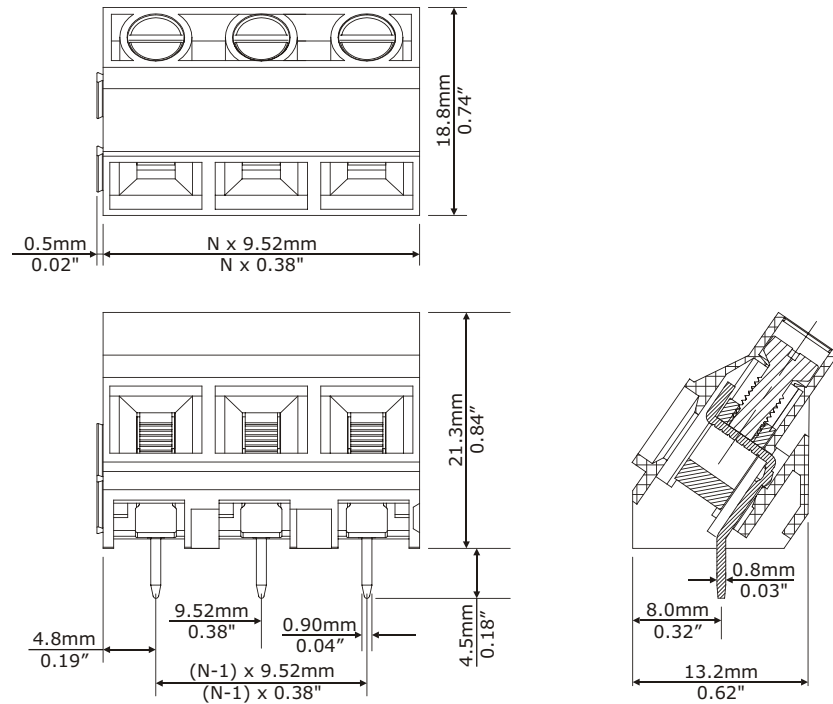
Withstand Voltage:

1500VAC, Test time 60 sec.

Wire Range:

10-24AWG

DIMENSIONAL REFERENCE



Safety Approval:



PART NUMBERING

EB779-XX-500

NUMBER OF
POSITIONS

N = Number of contacts

EBY Electro, Inc.

210 Express Street
Plainview, NY 11803-2423 USA

© Copyright 2007 EBY Electro, Inc.



Electro-Mechanical Components Since 1945

www.ebyelectro.com

Email: info@ebyelectro.com

Tel: 516.576.7777 · Fax: 516.576.1414

EB780

5.08mm SPACING, CAGE CLAMP, PC MOUNT

TECHNICAL DATA

MECHANICAL

Torque:

4.0 lbs-in. Max.

Operating Temperature:

-33°C to +120°C

-27°F to +248°F

Soldering Temperature:

260°C, 500°F for 5 seconds max

MATERIAL

Contact Block:

Brass, Tin Plated

Contact Solder Pin:

Brass, Tin Plated

Screw:

M3, Steel, Zinc Plated

Insulator Body:

Polyamide, UL 94V-0, Green

ELECTRICAL

Voltage Rating:

300VAC

Current Rating:

20 Amps

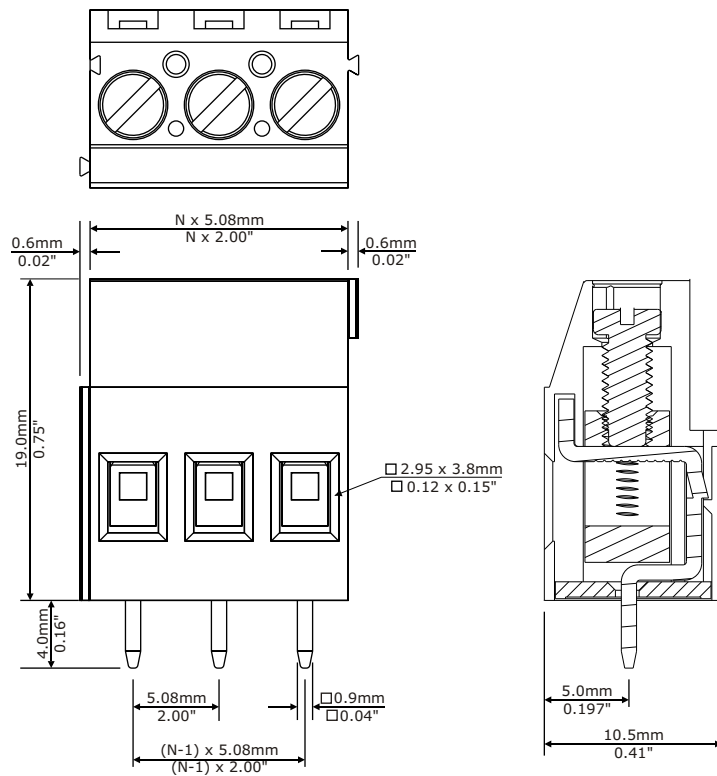
Withstand Voltage:

1500VAC, Test time 60 sec.

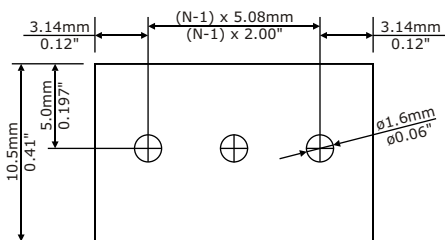
Wire Range:

12-30AWG

DIMENSIONAL REFERENCE



P.C.B. LAYOUT



RECOMMENDED P.C.B. HOLE SIZE: 1.6mm (0.062")

N = Number of contacts



Safety Approval:



PART NUMBERING

EB780-XX

NUMBER OF POSITIONS

If you require marking or printing on your parts, contact EB780 - we can provide blocks to your exact specifications.

EBY Electro, Inc.

210 Express Street
Plainview, NY 11803-2423 USA
© Copyright 2007 EB780 Electro, Inc.



Electro-Mechanical Components Since 1945

www.ebyelectro.com

Email: info@ebyelectro.com

Tel: 516.576.7777 · Fax: 516.576.1414

EB850

5mm SPACING, CAGE CLAMP, MINI BLOCK

TECHNICAL DATA

MECHANICAL

Torque:

5 lbs-in. Max.

Operating temperature:

-33°C to +120°C

-27°F to +248F

Soldering temperature:

260°C, 500°F for 5 seconds max

MATERIAL

Contact:

Brass, Nickel Plated

Contact Solder Pin:

Brass, Tin Plated

Screw:

M3, Steel, Zinc Plated

Insulator body:

Polyamide, UL 94V-0, Blue

ELECTRICAL

Voltage rating:

300VAC

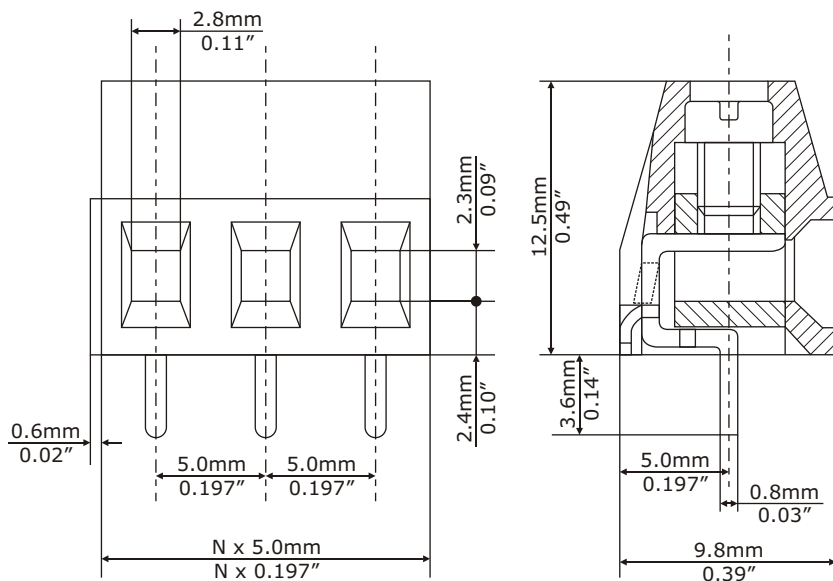
Current rating:

15 Amps

Wire range:

12-22AWG

DIMENSIONAL REFERENCE



Safety Approval:



PART NUMBERING

EB850-XX

NUMBER OF POSITIONS

RECOMMENDED P.C.B. HOLE SIZE: 1.3mm (0.05")

N = Number of contacts

If you require marking or printing on your parts, contact EBY - we can provide blocks to your exact specifications.

EBY Electro, Inc.

210 Express Street
Plainview, NY 11803-2423 USA

© Copyright 2007 EBY Electro, Inc.



Electro-Mechanical Components Since 1945

www.ebyelectro.com

Email: info@ebyelectro.com

Tel: 516.576.7777 · Fax: 516.576.1414

EB855

5mm SPACING, CAGE CLAMP, MINI BLOCK

TECHNICAL DATA

MECHANICAL

Torque:

4.0 lbs-in. Max.

Operating temperature:

-33°C to +120°C

-27°F to +248°F

Soldering temperature:

260°C, 500°F for 5 seconds max

MATERIAL

Contact Block:

Brass, Nickel Plated

Wire Guard:

Brass, Tin Plated

Screw:

M3, Steel, Zinc Plated

Insulator body:

PBT, UL 94V-0, Blue

ELECTRICAL

Voltage rating:

300VAC

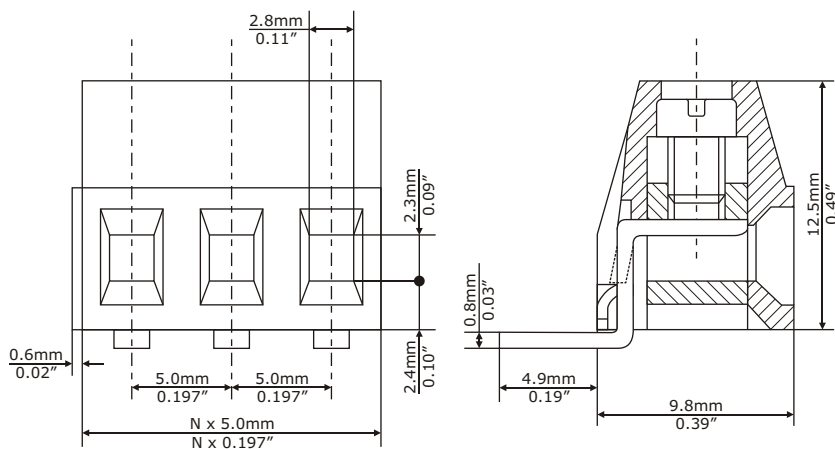
Current rating:

15 Amps

Wire range:

12-22AWG

DIMENSIONAL REFERENCE



Safety Approval:



PART NUMBERING

EB855-XX

NUMBER OF
POSITIONS

RECOMMENDED P.C.B. HOLE SIZE: 1.3mm (0.05")

N = Number of contacts

If you require marking or printing on your parts, contact EBY - we can provide blocks to your exact specifications.

EBY Electro, Inc.

210 Express Street
Plainview, NY 11803-2423 USA

© Copyright 2007 EBY Electro, Inc.



Electro-Mechanical Components Since 1945

www.ebyelectro.com

Email: info@ebyelectro.com

Tel: 516.576.7777 · Fax: 516.576.1414

EB858

5.08mm SPACING, CAGE CLAMP MINI BLOCK

TECHNICAL DATA

MECHANICAL

Torque:

5 lbs-in. Max.

Operating Temperature:

-33°C to +120°C

-27°F to +248°F

Soldering Temperature:

260°C, 500°F for 5 seconds max

MATERIAL

Contact Block:

Brass, Tin Plated

Contact Solder Pin:

Brass, Tin Plated

Screw:

M3, Steel, Zinc Plated

Insulator body:

PBT, UL 94V-0, Black

ELECTRICAL

Voltage rating:

300VAC

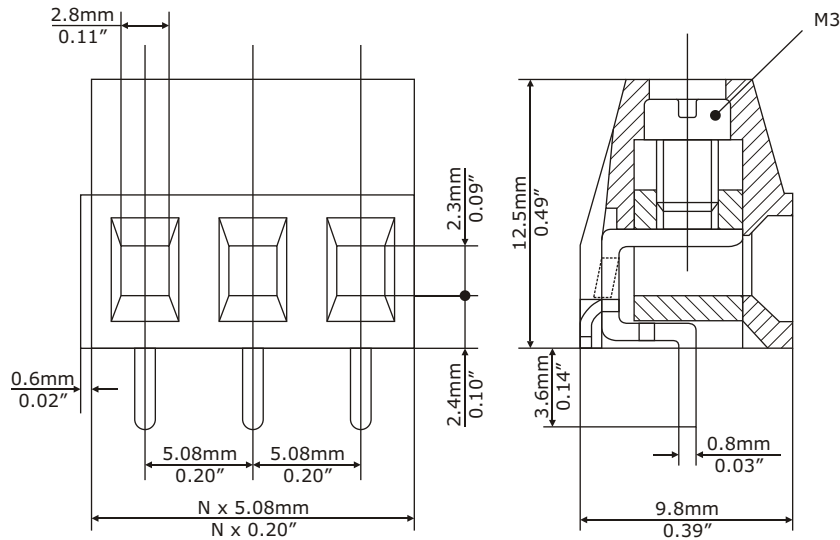
Current rating:

15 Amps

Wire range:

14-22AWG

DIMENSIONAL REFERENCE



Safety Approval:



PART NUMBERING

EB858-XX

NUMBER OF
POSITIONS
24 Maximum

RECOMMENDED P.C.B. HOLE SIZE: 1.3mm (0.05")

N = Number of contacts

If you require marking or printing on your parts, contact EB Y - we can provide blocks to your exact specifications.

EBY Electro, Inc.

210 Express Street
Plainview, NY 11803-2423 USA
© Copyright 2007 EBY Electro, Inc.



Electro-Mechanical Components Since 1945

www.ebyelectro.com

Email: info@ebyelectro.com

Tel: 516.576.7777 · Fax: 516.576.1414

EB1090

5mm SPACING, 35° CAGE CLAMP, MINI BLOCKS

TECHNICAL DATA

MECHANICAL

Torque:

5 lbs-in. Max.

Operating temperature:

-33°C to +120°C

-27°F to +248°F

Soldering temperature:

260°C, 500°F for 5 seconds max

MATERIAL

Contact:

Brass, Tin Plated

Contact Solder Pin:

Brass, Tin Plated

Screw:

M3, Steel, Zinc Plated

Insulator body:

Polyamide, UL 94V-0, Grey

ELECTRICAL

Voltage rating:

300VAC

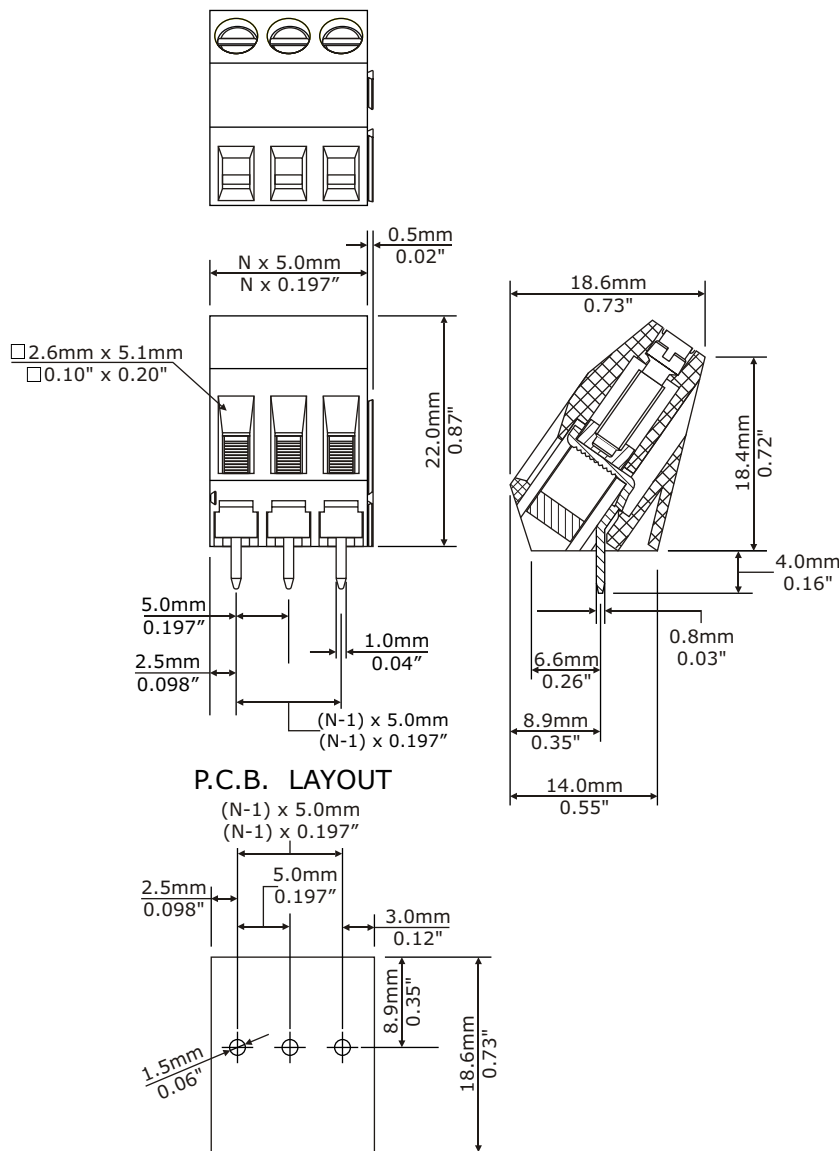
Current rating:

10 Amps

Wire range:

12-24AWG

DIMENSIONAL REFERENCE



Safety Approval:



PART NUMBERING

Part Number / Ordering Information

EB1090-XX-MTS

NUMBER OF POSITIONS

MOLDED TO SIZE OPTIONS
24 Positions Max.
Please consult factory for availability.

If you require marking or printing on your parts, contact EBY - we can provide blocks to your exact specifications.

N = Number of contacts

EBY Electro, Inc.

210 Express Street
Plainview, NY 11803-2423 USA

© Copyright 2007 EBY Electro, Inc.



Electro-Mechanical Components Since 1945

www.ebyelectro.com

Email: info@ebyelectro.com

Tel: 516.576.7777 · Fax: 516.576.1414

EB1098

5.08mm SPACING, CAGE CLAMP, MINI BLOCK

TECHNICAL DATA

MECHANICAL

Torque:

5 lbs-in. Max.

Operating temperature:

-33°C to +120°C

-27°F to +248°F

Soldering temperature:

260°C, 500°F for 5 seconds max

MATERIAL

Contact:

Brass, Tin Plated

Contact Solder Pin:

Brass, Tin Plated

Screw:

M3, Steel, Zinc Plated

Insulator body:

Polyamide, UL 94V-0, Grey

ELECTRICAL

Voltage rating:

300VAC

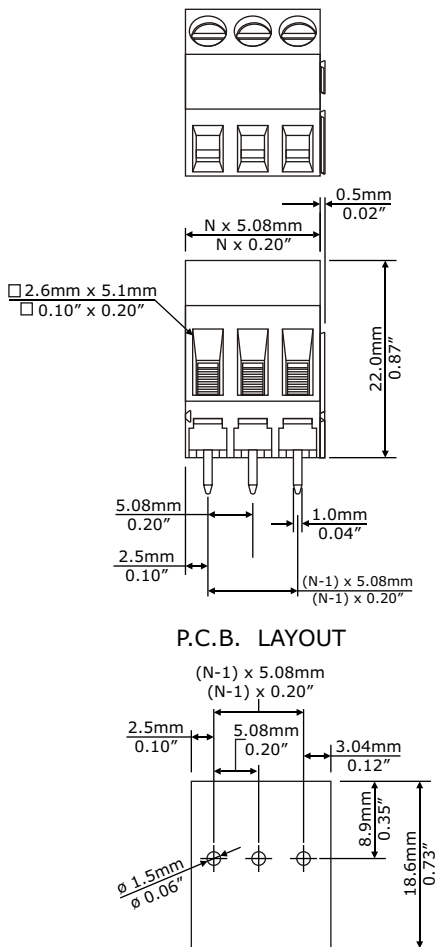
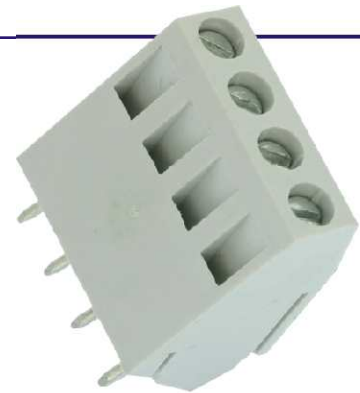
Current rating:

10 Amps

Wire range:

12-24AWG

DIMENSIONAL REFERENCE



Safety Approval:



PART NUMBERING

Part Number / Ordering Information

EB1098-XX

NUMBER OF
POSITIONS

If you require marking or printing on your parts, contact EBY - we can provide blocks to your exact specifications.

N = Number of contacts

EBY Electro, Inc.

210 Express Street
Plainview, NY 11803-2423 USA
© Copyright 2007 EBY Electro, Inc.



Electro-Mechanical Components Since 1945

www.ebyelectro.com

Email: info@ebyelectro.com

Tel: 516.576.7777 · Fax: 516.576.1414

EB1100

10.16mm SPACING, CAGE CLAMP, MINI BLOCK

TECHNICAL DATA

MECHANICAL

Torque:

10 lbs-in. Max.

Operating temperature:

-33°C to +120°C

-27°F to +248°F

Soldering temperature:

260°C, 500°F for 5 seconds max

MATERIAL

Contact Block:

Steel, Nickel Plated

Contact Solder Pin:

Brass, Tin Plated

Screw:

M4, Steel, Zinc Plated

Insulator body:

Polyamide, UL 94V-0, Grey

ELECTRICAL

Voltage rating:

300VAC

Current rating:

57 Amps

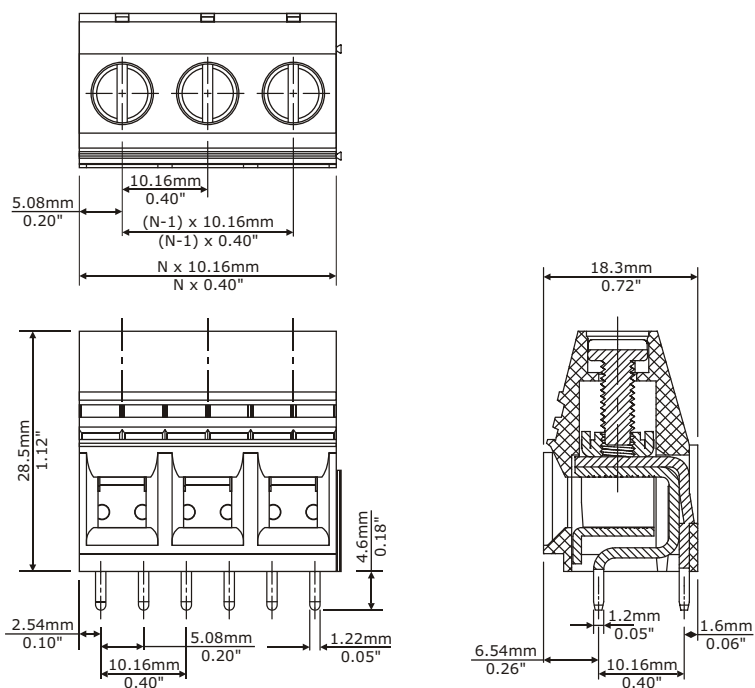
Withstand Voltage:

1500VAC, Test time 60 sec.

Wire range:

8-22AWG

DIMENSIONAL REFERENCE



Safety Approval:



PART NUMBERING

Part Number / Ordering Information

EB1100-XX-800

NUMBER OF
POSITIONS

If you require marking or printing on your parts, contact EB1100 - we can provide blocks to your exact specifications.

N = Number of quarter contacts

EBY Electro, Inc.

210 Express Street
Plainview, NY 11803-2423 USA
© Copyright 2003 EBY Electro, Inc.



Electro-Mechanical Components Since 1945

www.ebyelectro.com

Email: info@ebyelectro.com

Tel: 516.576.7777 · Fax: 516.576.1414

EB2015

15mm SPACING, DUAL LEG, CAGE CLAMP, MINI BLOCK

TECHNICAL DATA

MECHANICAL

Torque:

30 lbs-in. Max.

Operating temperature:

-33°C to +120°C

-27°F to +248°F

Soldering temperature:

260°C, 500°F for 5 seconds max

MATERIAL

Contact Block:

Steel Stamping

Contact Solder Pin:

Brass, Tin Plated

Screw:

M5, Zinc Plated, Yellow Chromate

Insulator body:

Polyamide, UL 94V-0, Grey

ELECTRICAL

Voltage rating:

1000VAC

Current rating:

125 Amps

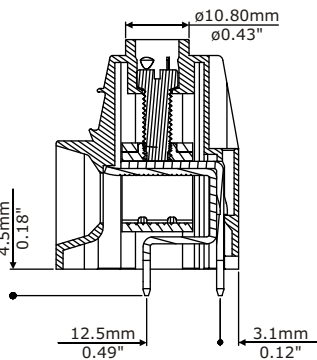
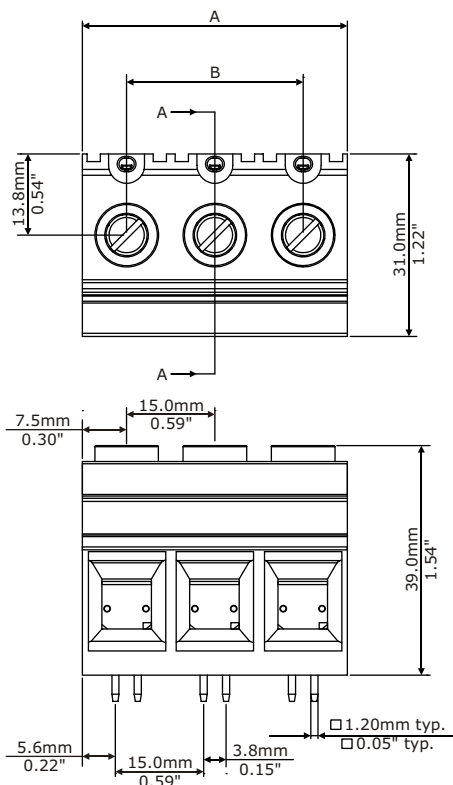
Withstand Voltage:

8000VAC, Test time 60 sec.

Wire range:

2-22AWG

DIMENSIONAL REFERENCE



Safety Approval:



PART NUMBERING

Part Number / Ordering Information

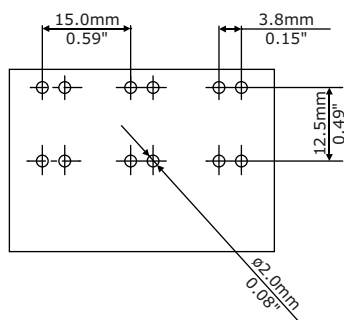
EB2015-XX-X0X

NUMBER OF POSITIONS

COLOR
0 - Black
5 - Green

SPACING
0 - Standard
2 - Double
3 - Triple

P.C.B. LAYOUT



Pole	DIM A	DIM B
2	30.00±0.30	15.00±0.20
3	45.00±0.30	30.00±0.30
4	60.00±0.50	45.00±0.30
5	75.00±0.50	60.00±0.50
6	90.00±0.80	75.00±0.50
7	105.00±0.80	90.00±0.80
8	120.00±0.80	105.00±0.80
9	135.00±0.80	120.00±0.80
10	150.00±0.80	135.00±0.80

EB2015MF

15mm SPACING, DUAL LEG, CAGE CLAMP, MOUNTING FLANGE

TECHNICAL DATA

MECHANICAL

Torque:

30 lbs-in. Max.

Operating temperature:

-33°C to +120°C

-27°F to +248°F

Soldering temperature:

260°C, 500°F for 5 seconds max

MATERIAL

Contact Block:

Steel Stamping

Contact Solder Pin:

Brass, Tin Plated

Screw:

M5, Zinc Plated, Yellow Chromate

Insulator body:

Polyamide, UL 94V-0, Grey

ELECTRICAL

Voltage rating:

1000VAC

Current rating:

125 Amps

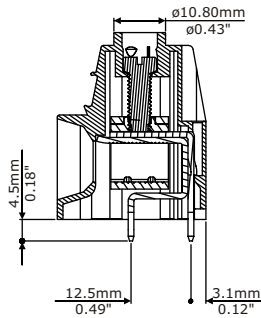
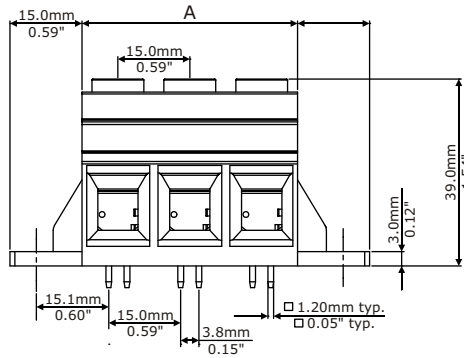
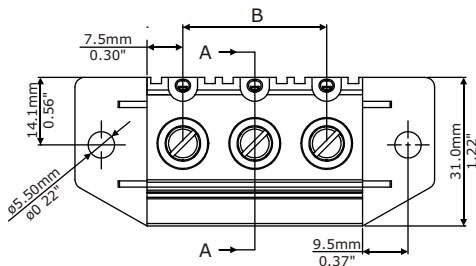
Withstand Voltage:

8000VAC, Test time 60 sec.

Wire range:

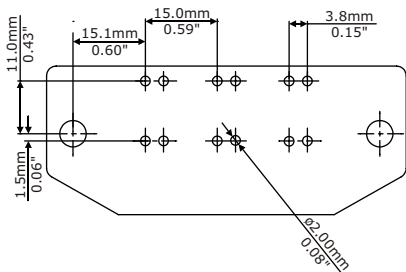
2-20AWG

DIMENSIONAL REFERENCE



SECTION A-A

P.C.B. LAYOUT



Safety Approval:



PART NUMBERING

Part Number / Ordering Information

EB2015MF-XX-X0X

NUMBER OF POSITIONS	COLOR	SPACING
	0 - Black	0 - Standard
	5 - Green	2 - Double
		3 - Triple

Pole	DIM A	DIM B
2	30.00±0.30	15.00±0.20
3	45.00±0.30	30.00±0.30
4	60.00±0.50	45.00±0.30
5	75.00±0.50	60.00±0.50
6	90.00±0.80	75.00±0.50
7	105.00±0.80	90.00±0.80
8	120.00±0.80	105.00±0.80
9	135.00±0.80	120.00±0.80
10	150.00±0.80	135.00±0.80

EB2200

5mm SPACING, DUAL LEG, CAGE CLAMP, MINI BLOCK

TECHNICAL DATA

MECHANICAL

Torque:

3.5 lbs-in. Max.

Operating Temperature:

-33°C to +120°C

-27°F to +248°F

Soldering Temperature:

260°C, 500°F for 5 seconds max.

MATERIAL

Contact Solder Pin:

Brass Machined, Tin Plated

Wire Clamp:

Steel Zinc Plated

Screw:

M2.5, Steel, Zinc Plated

Insulator body:

Polyamide, UL 94V-0, Green

ELECTRICAL

Voltage rating:

250VAC

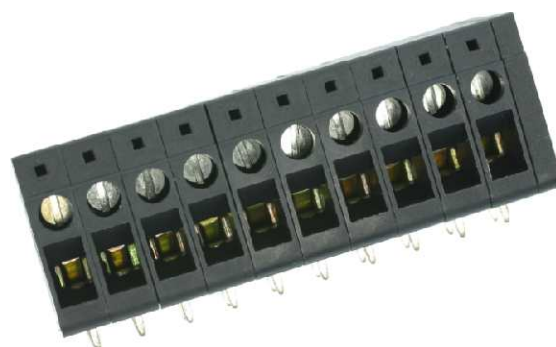
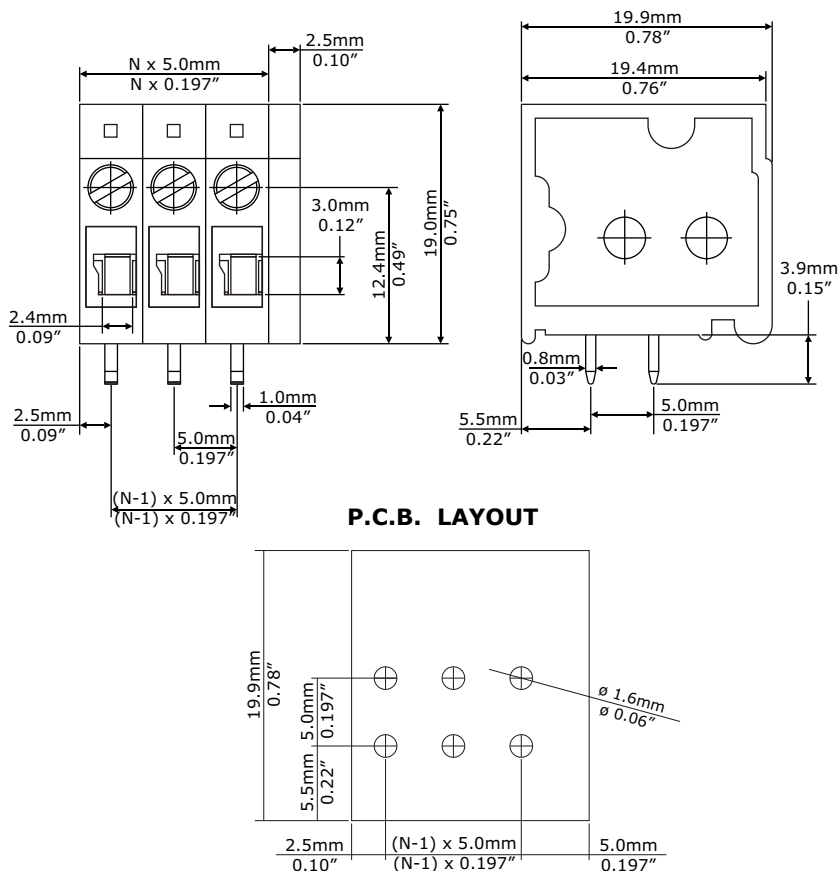
Current rating:

15 Amps

Wire range:

14-26AWG

DIMENSIONAL REFERENCE



Safety Approval:



PART NUMBERING

Part Number / Ordering Information

EB2200-XX

NUMBER OF
POLES

N = Number of contacts

EBY Electro, Inc.

210 Express Street
Plainview, NY 11803-2423 USA

© Copyright 2007 EBY Electro, Inc.



Electro-Mechanical Components Since 1945

www.ebyelectro.com

Email: info@ebyelectro.com

Tel: 516.576.7777 · Fax: 516.576.1414

EB4501

5mm SPACING, SURFACE MOUNT, CAGE CLAMP MINI BLOCK

TECHNICAL DATA

MECHANICAL

Torque:

3.5 lbs-in. Max.

Operating Temperature:

-33°C to +120°C

-27°F to +248°F

Soldering Temperature:

260°C, 500°F for 5 seconds max

MATERIAL

Contact:

Brass, Tin Plated

Contact Solder Pin:

Brass, Tin Plated

Screw:

M3, Steel, Zinc Plated

Insulator Body:

Polyamide, UL 94V-0

ELECTRICAL

Voltage Rating:

300VAC

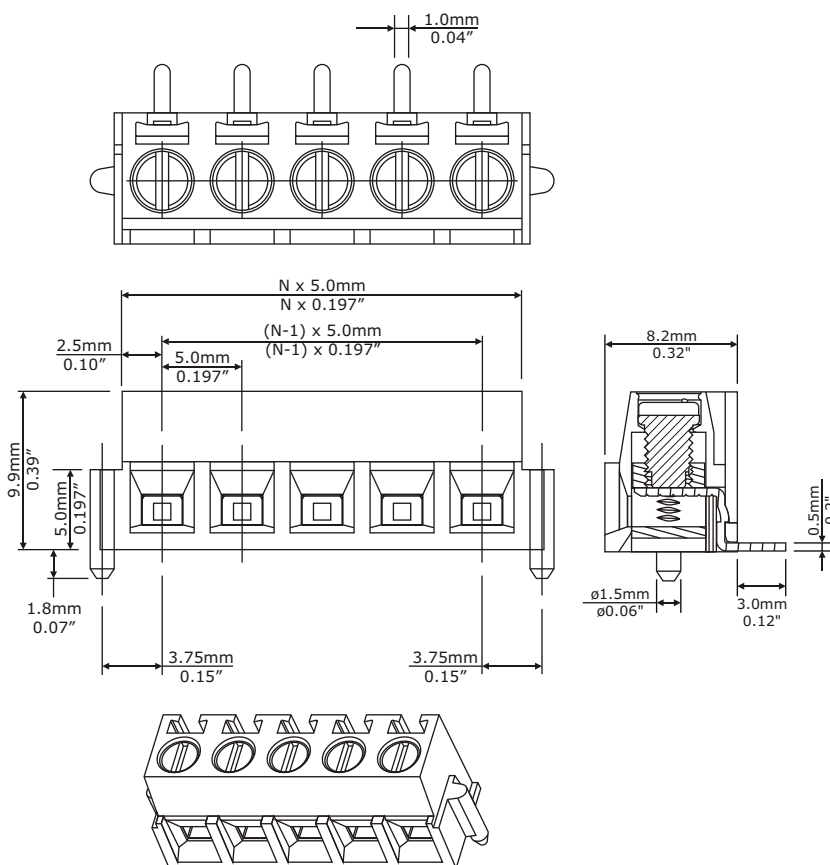
Current Rating:

6 Amps

Wire Range:

14-30AWG

DIMENSIONAL REFERENCE



Safety Approval:



PART NUMBERING

EB4501-XX

NUMBER OF
POLES

N = Number of contacts

If you require marking or printing on your parts, contact EBY - we can provide blocks to your exact specifications.

EBY Electro, Inc.

210 Express Street
Plainview, NY 11803-2423 USA

© Copyright 2007 EBY Electro, Inc.



Electro-Mechanical Components Since 1945

www.ebyelectro.com

Email: info@ebyelectro.com

Tel: 516.576.7777 · Fax: 516.576.1414