

EBY ELECTRO, INC.



Electro-Mechanical Components Since 1945

# BARRIER MINI-BLOCKS



EBY Electro, Inc.

210 Express Street  
Plainview, NY 11803-2423 USA  
© Copyright 2007 EBY Electro, Inc.



Electro-Mechanical Components Since 1945

[www.ebyelectro.com](http://www.ebyelectro.com)

Email: [info@ebyelectro.com](mailto:info@ebyelectro.com)

Tel: 516.576.7777 · Fax: 516.576.1414

# SERIES 2250

## .250" PITCH, OFFSET CONTACTS

### TECHNICAL DATA

#### MECHANICAL

**Torque:**

4.0 lbs-in. Max.

**Operating Temperature:**

-40°C to +105°C

-40°F to +221°F

**Soldering Temperature:**

260°C, 500°F for 5 seconds max

#### MATERIAL

**Contact:**

Brass, Tin Plated

**Screw:**

M3, Steel, Zinc Plated, Combo Head

**Insulator Body:**

Polyamide, UL 94V-0, Black

#### ELECTRICAL

**Voltage Rating:**

300VAC

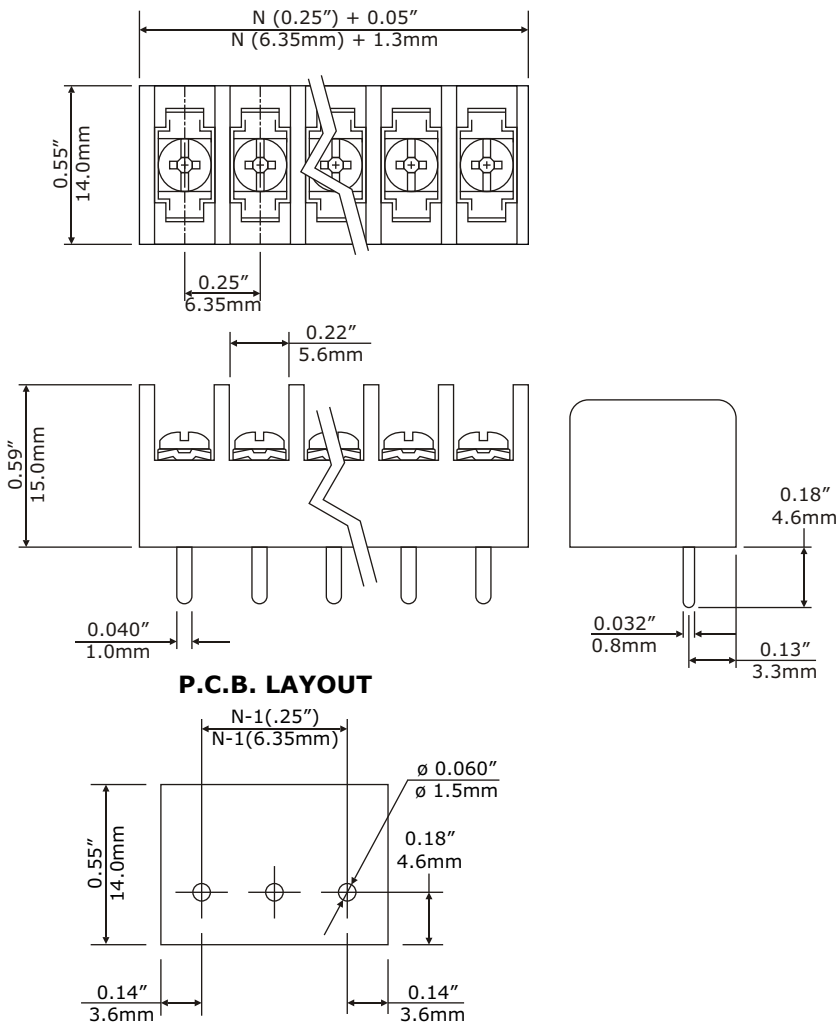
**Current Rating:**

10 Amps

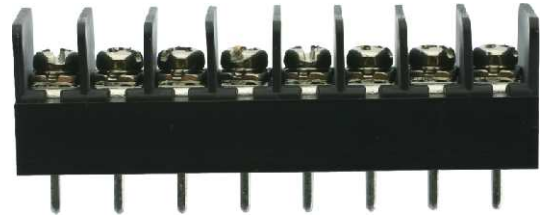
**Wire Range:**

18-22AWG

### DIMENSIONAL REFERENCE



N = Number of contacts



Safety Approval:



### PART NUMBERING

Part Number / Ordering Information

**2250-XX-N-XX**

NUMBER OF POSITIONS  
29 Maximum

SCREW OPTIONS

00 - No Screws

02 - Steel Zinc Plated Sems

EBY Electro, Inc.

210 Express Street  
Plainview, NY 11803-2423 USA

© Copyright 2007 EBY Electro, Inc.



Electro-Mechanical Components Since 1945

[www.ebyelectro.com](http://www.ebyelectro.com)

Email: [info@ebyelectro.com](mailto:info@ebyelectro.com)

Tel: 516.576.7777 · Fax: 516.576.1414

# SERIES 2900

## .300 PITCH, CENTERLINE CONTACTS

### TECHNICAL DATA

#### MECHANICAL

**Torque:**  
5.0 lbs-in. Max.  
**Operating Temperature:**  
-40°C to +105°C  
-40°F to +221°F  
**Soldering Temperature:**  
260°C, 500°F for 5 seconds max

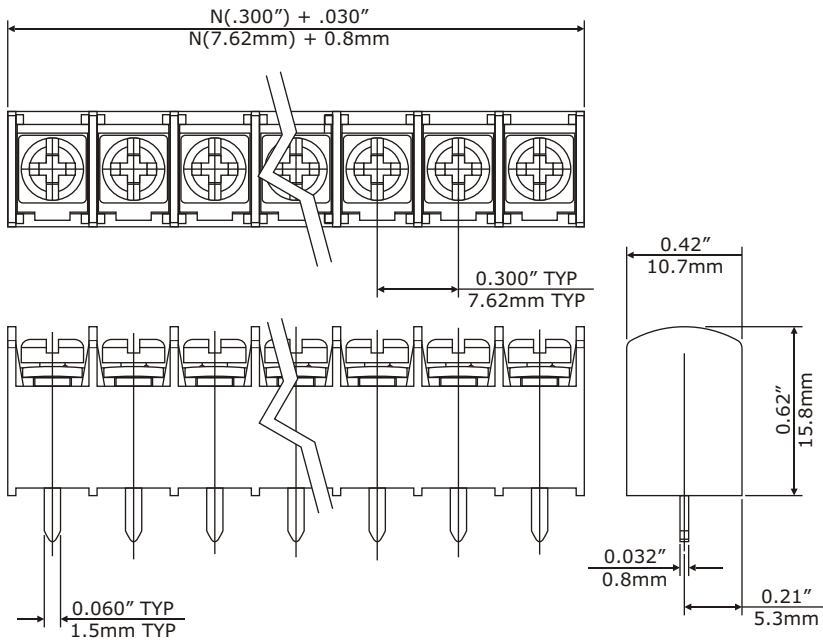
#### MATERIAL

**Contact:**  
Brass, Tin Plated  
**Screw:**  
#5-40, Combo Head  
**Insulator Body:**  
Polycarbonate, UL 94V-0, Black

#### ELECTRICAL

**Voltage Rating:**  
300VAC  
**Current Rating:**  
15 Amps  
**Wire Range:**  
14-22AWG

### DIMENSIONAL REFERENCE



Safety Approval:



### PART NUMBERING

Part Number / Ordering Information

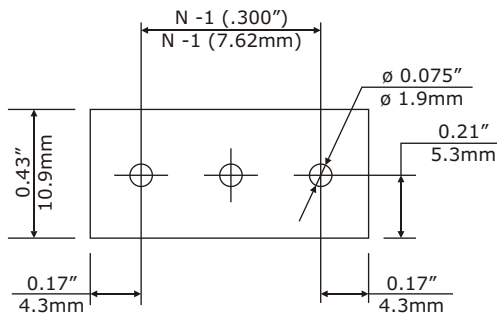
**2902-XX-N-XX**

NUMBER OF  
POSITIONS  
20 Maximum

SCREW OPTIONS

- 00 - No Screws
- 02 - Steel Zinc Plated Sems
- 46 - Steel Sems Uncaptive, Wire Ready

#### P.C.B. LAYOUT



N = Number of contacts

EBY Electro, Inc.

210 Express Street  
Plainview, NY 11803-2423 USA  
© Copyright 2007 EBY Electro, Inc.



Electro-Mechanical Components Since 1945

[www.ebyelectro.com](http://www.ebyelectro.com)

Email: [info@ebyelectro.com](mailto:info@ebyelectro.com)

Tel: 516.576.7777 · Fax: 516.576.1414

# SERIES 3000

## .325" PITCH, HIGH PROFILE, CENTERLINE CONTACTS

### TECHNICAL DATA

#### MECHANICAL

**Torque:**

10 lbs-in. Max

**Operating Temperature:**

-40°C to +105°C

-40°F to +221°F

**Soldering Temperature:**

260°C, 500°F for 5 seconds max

#### MATERIAL

**Contact:**

Brass, Tin Plated

**Screw:**

#6-32, Combo Head

**Insulator Body:**

Polycarbonate, UL 94V-0, Black

#### ELECTRICAL

**Voltage Rating:**

300VAC

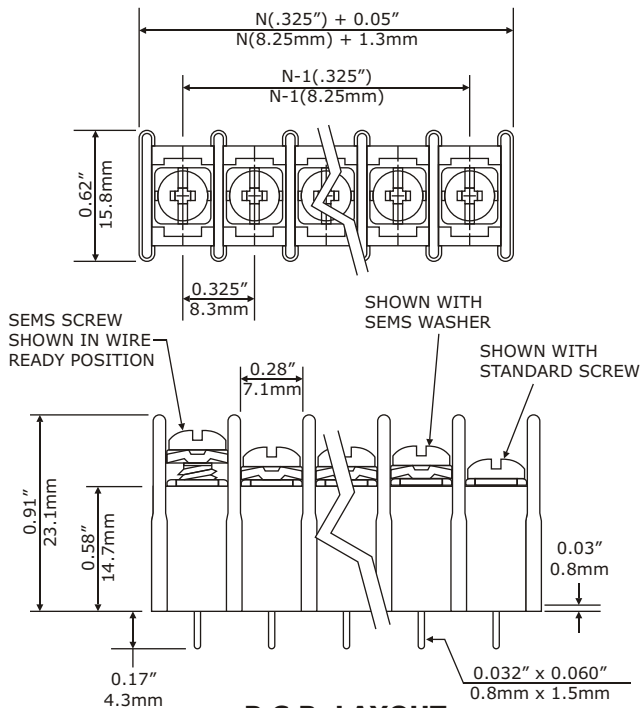
**Current Rating:**

15 Amps

**Wire Range:**

14-22AWG

### DIMENSIONAL REFERENCE



Safety Approval:



### PART NUMBERING

Part Number / Ordering Information

**3002-XX-N-XX**

NUMBER OF POSITIONS  
16 Maximum

#### SCREW OPTIONS

- 00 - No Screws
- 01 - Steel Zinc Plated
- 02 - Steel Zinc Plated Sems
- 03 - Brass Nickel Plated
- 04 - Brass Nickel Plated Sems
- 12 - Steel Sems Captive
- 14 - Brass Sems Captive
- 22 - Steel Sems Captive, Wire Ready
- 24 - Steel Sems Uncaptive, Wire Ready
- 46 - Steel Sems Uncaptive, Wire Ready

N = Number of contacts

EBY Electro, Inc.

210 Express Street  
Plainview, NY 11803-2423 USA

© Copyright 2007 EBY Electro, Inc.



Electro-Mechanical Components Since 1945

[www.ebyelectro.com](http://www.ebyelectro.com)

Email: [info@ebyelectro.com](mailto:info@ebyelectro.com)

Tel: 516.576.7777 · Fax: 516.576.1414

# SERIES 3500

## .375" PITCH, 30° ENTRY, CENTERLINE CONTACT

### TECHNICAL DATA

#### MECHANICAL

**Torque:**  
10 lbs-in. Max.  
**Operating Temperature:**  
-40°C to +105°C  
-40°F to +221°F  
**Soldering Temperature:**  
260°C, 500°F for 5 seconds max

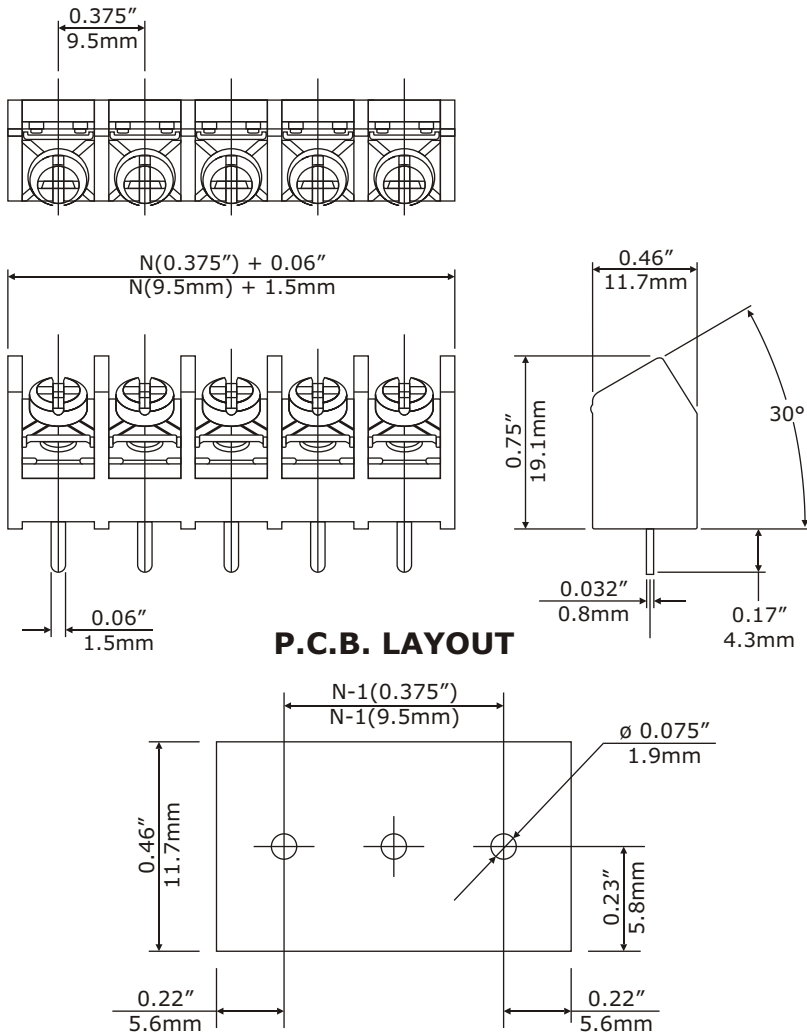
#### MATERIAL

**Contact:**  
Brass, Tin Plated  
**Screw:**  
#6-32, Combo Head  
**Insulator Body:**  
Polycarbonate, UL94V-0, Black

#### ELECTRICAL

**Voltage Rating:**  
300VAC  
**Current Rating:**  
20 Amps  
**Wire Range:**  
12-24AWG

### DIMENSIONAL REFERENCE



N = Number of contacts



Safety Approval:



### PART NUMBERING

Part Number / Ordering Information

**3502-XX-N-XX**

NUMBER OF POSITIONS  
16 Maximum

#### SCREW OPTIONS

- 00 - No Screws
- 01 - Steel Zinc Plated
- 02 - Steel Zinc Plated Sems
- 03 - Brass Nickel Plated
- 04 - Brass Nickel Plated Sems
- 12 - Steel Sems Captive
- 14 - Brass Sems Captive
- 22 - Steel Sems Captive, Wire Ready
- 24 - Brass Sems Captive, Wire Ready
- 46 - Steel Sems Uncaptive, Wire Ready

# SERIES 5000

## .325" PITCH, OFFSET CONTACTS, OPEN BOTTOM

### TECHNICAL DATA

#### MECHANICAL

**Torque:**  
10 lbs-in. Max  
**Operating Temperature:**  
-40°C to +105°C  
-40°F to +221°F  
**Soldering Temperature:**  
260°C, 500°F for 5 seconds max

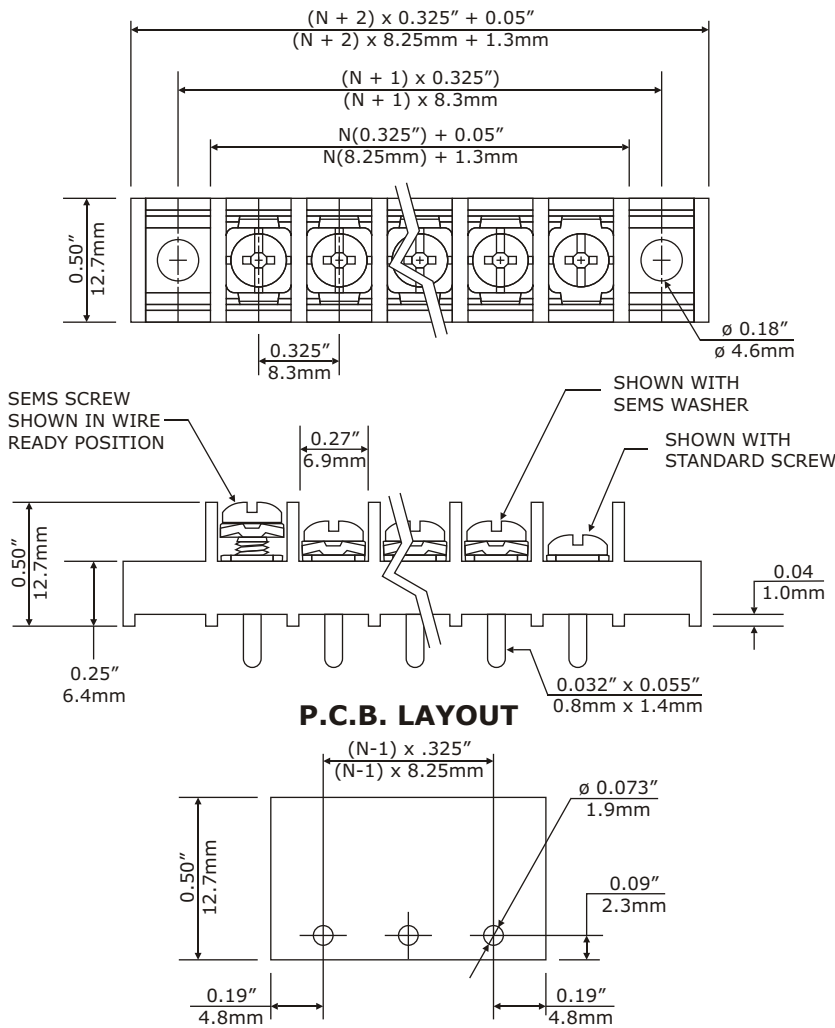
#### MATERIAL

**Contact:**  
Brass, Tin Plated  
**Screw:**  
#6-32, Combo Head  
**Insulator Body:**  
Polycarbonate, UL 94V-0, Black

#### ELECTRICAL

**Voltage Rating:**  
300VAC  
**Current Rating:**  
20 Amps  
**Wire Range:**  
12 - 26AWG

### DIMENSIONAL REFERENCE



N = Number of contacts



Safety Approval:



### PART NUMBERING

Part Number / Ordering Information

**50XX-XX-X-XX-XXXX**

Terminal Styles

NUMBER OF TERMINALS

Mounting Hole Options

OPTION CODE

#### SCREW OPTIONS

- 00 - No Screws
- 01 - Steel Zinc Plated
- 02 - Steel Zinc Plated Sems
- 03 - Brass Nickel Plated
- 04 - Brass Nickel Plated Sems
- 11 - Steel Zinc Captive
- 12 - Steel Zinc Sems Captive
- 13 - Brass Nickel Captive
- 14 - Brass Nickel Sems Captive
- 21 - Steel Zinc Captive, Wire Ready
- 22 - Steel Zinc Sems Captive, Wire Ready
- 23 - Brass Nickel Captive, Wire Ready
- 24 - Brass Nickel Sems Captive, Wire Ready
- 46 - Steel Sems Uncaptive, Wire Ready



# SERIES 5202

## 0.325" PITCH, CENTERLINE CONTACTS

### TECHNICAL DATA

#### MECHANICAL

**Torque:**  
8 lbs-in. Max.  
**Operating Temperature:**  
-40°C to +105°C  
-40°F to +221F

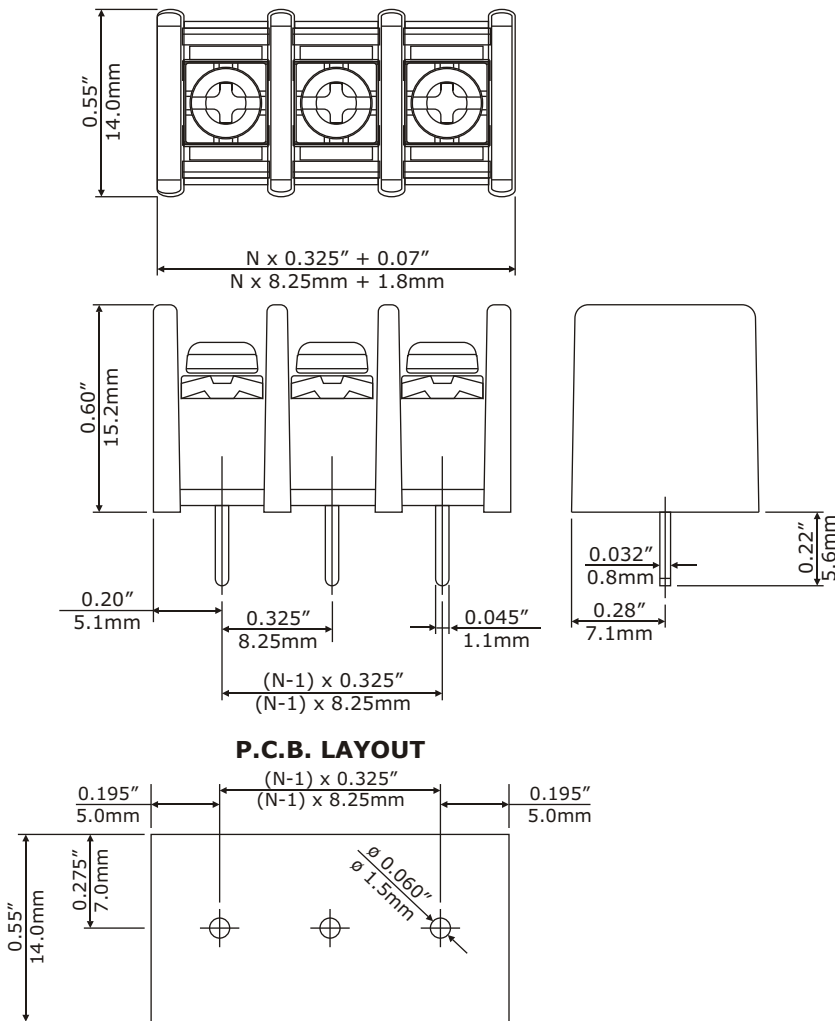
#### MATERIAL

**Contact:**  
Brass, Tin Plated  
**Screw:**  
M3, Steel, Ni Plated  
**Insulator Body:**  
Polyamide, UL 94V-0, Black

#### ELECTRICAL

**Voltage Rating:**  
300VAC  
**Current Rating:**  
20 Amps  
**Wire Range:**  
12-26AWG

### DIMENSIONAL REFERENCE



N = Number of contacts



Safety Approval:



### PART NUMBERING

Part Number / Ordering Information

**5202-XX-N-02**

NUMBER OF  
TERMINALS

# **SERIES 5503**

## **0.325" PITCH, DUAL LEVEL**

### **TECHNICAL DATA**

#### **MECHANICAL**

**Torque:**  
10 lbs-in. Max.  
**Operating Temperature:**  
-33°C to +120°C  
-27°F to +248F

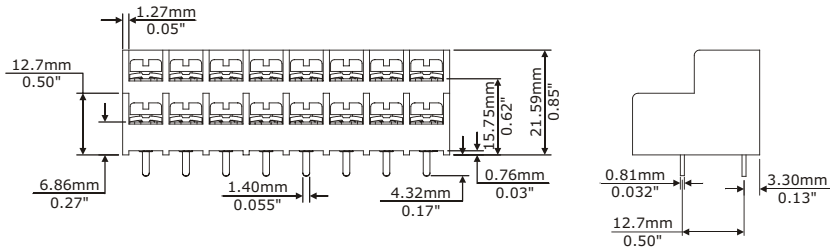
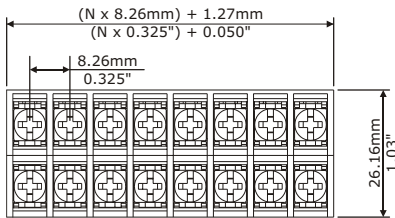
#### **MATERIAL**

**Contact:**  
Brass, Tin Plated  
**Screw:**  
#6-32, Steel, Zinc Plated  
**Insulator Body:**  
Polycarbonate, UL 94V-0, Black

#### **ELECTRICAL**

**Voltage Rating:**  
300VAC  
**Current Rating:**  
20 Amps  
**Wire Range:**  
12-24AWG

### **DIMENSIONAL REFERENCE**



Safety Approval:



### **PART NUMBERING**

Part Number / Ordering Information

**5503-XX-N-02**

NUMBER OF  
TERMINALS

# SERIES 6000

## .375" PITCH, CENTERLINE CONTACTS

### TECHNICAL DATA

#### MECHANICAL

**Torque:**  
10 lbs-in. Max  
**Operating Temperature:**  
-40°C to +105°C  
-40°F to +221°F  
**Soldering Temperature:**  
260°C, 500°F for 5 seconds max

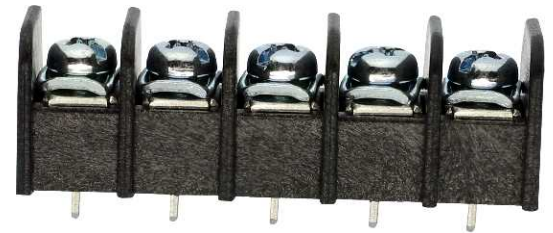
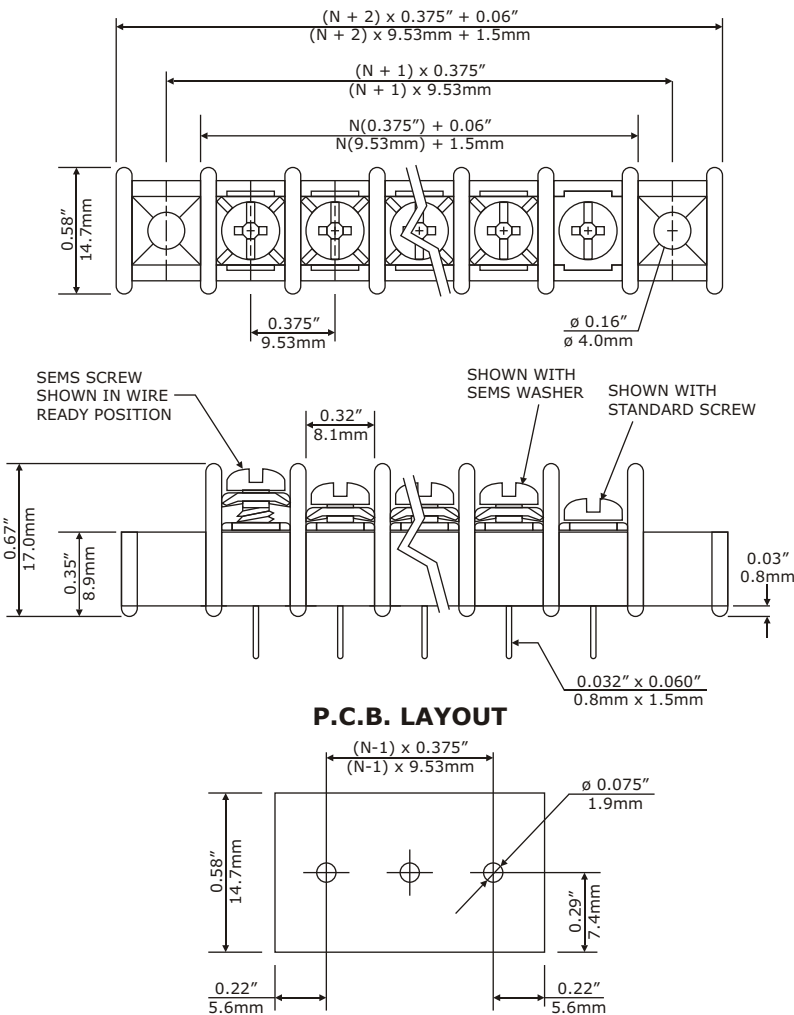
#### MATERIAL

**Contact:**  
Brass, Tin Plated  
**Screw:**  
#6-32, Combo Head  
**Insulator Body:**  
Polycarbonate, UL 94V-0, Black

#### ELECTRICAL

**Voltage Rating:**  
300VAC  
**Current Rating:**  
20 Amps  
**Wire Range:**  
12-24AWG

### DIMENSIONAL REFERENCE



Safety Approval:



### PART NUMBERING

Part Number / Ordering Information

**60XX-XX-X-XX-XXXX**

Terminal Styles

NUMBER OF TERMINALS

OPTION CODE (IF APPLICABLE)

Mounting Hole Options

#### SCREW OPTIONS

- 00 - No Screws
- 01 - Steel Zinc Plated
- 02 - Steel Zinc Plated Sems
- 03 - Brass Nickel Plated
- 04 - Brass Nickel Plated Sems
- 05 - Stainless Steel Phillips Head
- 11 - Steel Zinc Captive
- 12 - Steel Zinc Sems Captive
- 13 - Brass Nickel Captive
- 14 - Brass Nickel Sems Captive
- 21 - Steel Zinc Captive, Wire Ready
- 22 - Steel Zinc Sems Captive, Wire Ready
- 23 - Brass Nickel Captive, Wire Ready
- 24 - Brass Nickel Sems Captive, Wire Ready
- 46 - Steel Sems Uncaptive, Wire Ready

N = Number of contacts

EBY Electro, Inc.

210 Express Street  
Plainview, NY 11803-2423 USA  
© Copyright 2007 EBY Electro, Inc.



Electro-Mechanical Components Since 1945

[www.ebyelectro.com](http://www.ebyelectro.com)

Email: [info@ebyelectro.com](mailto:info@ebyelectro.com)

Tel: 516.576.7777 · Fax: 516.576.1414

# SERIES 6203

## .375" PITCH, CENTERLINE CONTACTS

### TECHNICAL DATA

#### MECHANICAL

**Torque:**

10 lbs-in. Max

**Operating Temperature:**

-33°C to +120°C

-27°F to +248°F

#### MATERIAL

**Contact:**

Brass, Tin Plated

**Screw:**

#6-32, Combo Head

**Insulator Body:**

Polycarbonate, UL 94V-0, Black

#### ELECTRICAL

**Voltage Rating:**

300VAC

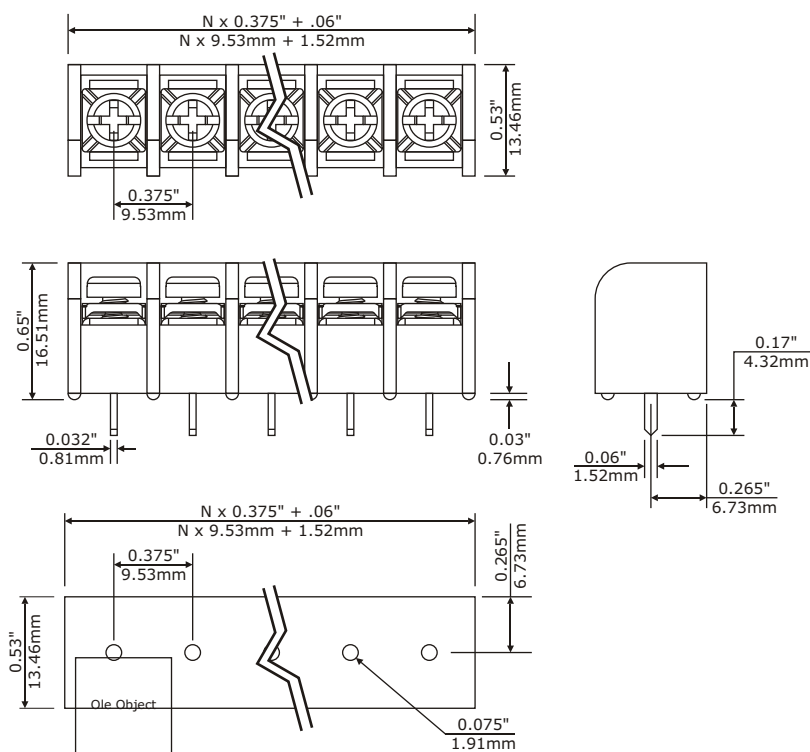
**Current Rating:**

20 Amps

**Wire Range:**

12-24AWG

### DIMENSIONAL REFERENCE



Safety Approval:



### PART NUMBERING

Part Number / Ordering Information

**6203-XX-N-XX**NUMBER OF  
POLES  
16 Poles Max.**SCREW OPTIONS**

- 00 - No Screws
- 01 - Steel Zinc Plated
- 02 - Steel Zinc Plated Sems
- 12 - Steel Zinc Sems Captive
- 22 - Steel Zinc Sems Captive, Wire Ready

**EBY Electro, Inc.**210 Express Street  
Plainview, NY 11803-2423 USA

© Copyright 2007 EBY Electro, Inc.



Electro-Mechanical Components Since 1945

[www.ebyelectro.com](http://www.ebyelectro.com)Email: [info@ebyelectro.com](mailto:info@ebyelectro.com)

Tel: 516.576.7777 · Fax: 516.576.1414

# SERIES 6800

## .375" PITCH, 15° ENTRY

### TECHNICAL DATA

#### MECHANICAL

**Torque:**  
10 lbs-in. Max.  
**Operating Temperature:**  
-40°C to +105°C  
-40°F to +221°F  
**Soldering Temperature:**  
260°C, 500°F for 5 seconds max

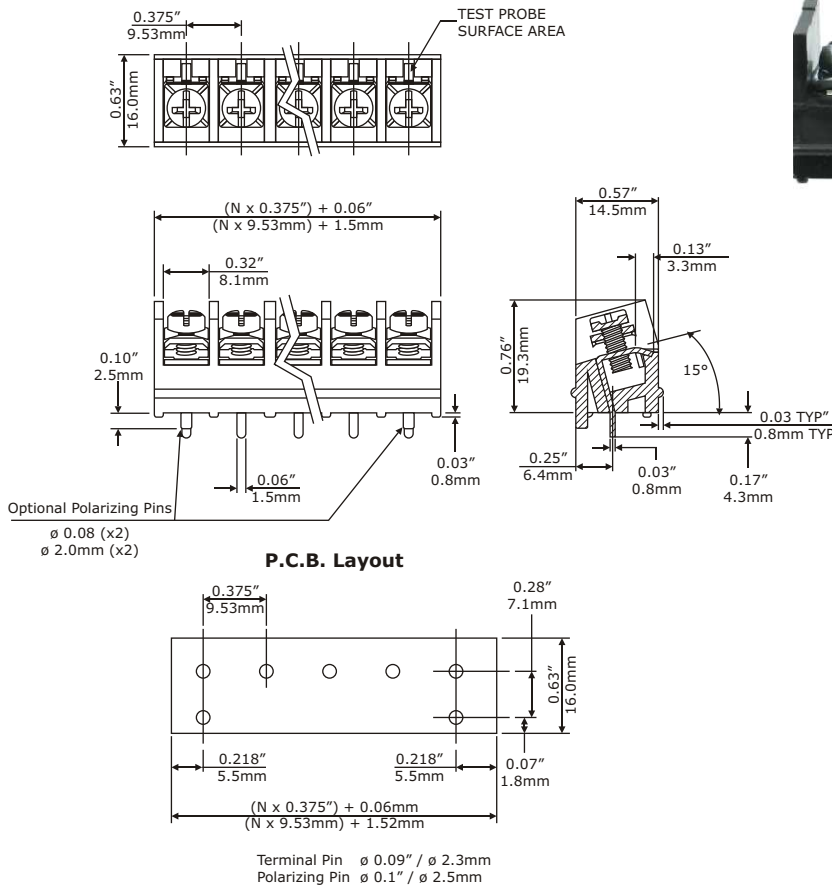
#### MATERIAL

**Contact:**  
Brass, Tin Plated  
**Screw:**  
#6-32, Combo Head  
**Insulator Body:**  
UL 94V-0 Thermoplastic, Black

#### ELECTRICAL

**Voltage Rating:**  
300VAC  
**Current Rating:**  
15 Amps  
**Wire Range:**  
12-24AWG

### DIMENSIONAL REFERENCE



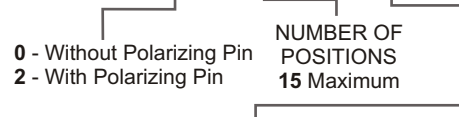
Safety Approval:



### PART NUMBERING

Part Number / Ordering Information

## 68X3-XX-N-XX



#### SCREW OPTIONS

- 00 - No Screws
- 01 - Steel Zinc Plated
- 02 - Steel Zinc Plated Sems
- 03 - Brass Nickel Plated
- 04 - Brass Nickel Plated Sems
- 12 - Steel Sems Captive
- 14 - Brass Sems Captive
- 22 - Steel Sems Captive, Wire Ready
- 24 - Brass Sems Captive, Wire Ready
- 46 - Steel Sems Uncaptive, Wire Ready

N = Number of contacts

**EBY Electro, Inc.**

210 Express Street  
Plainview, NY 11803-2423 USA  
© Copyright 2007 EBY Electro, Inc.



Electro-Mechanical Components Since 1945

[www.ebyelectro.com](http://www.ebyelectro.com)

Email: [info@ebyelectro.com](mailto:info@ebyelectro.com)

Tel: 516.576.7777 · Fax: 516.576.1414

# SERIES 7000

## .437" PITCH, CENTERLINE CONTACTS

### TECHNICAL DATA

#### MECHANICAL

**Torque:**

10 lbs-in. Max

**Operating Temperature:**

-40°C to +105°C

-40°F to +221°F

**Soldering Temperature:**

260°C, 500°F for 5 seconds max

#### MATERIAL

**Contact:**

Brass, Tin Plated

**Screw:**

#6-32, Combo Head

**Insulator Body:**

Polycarbonate, UL 94V-0, Black

#### ELECTRICAL

**Voltage Rating:**

600VAC

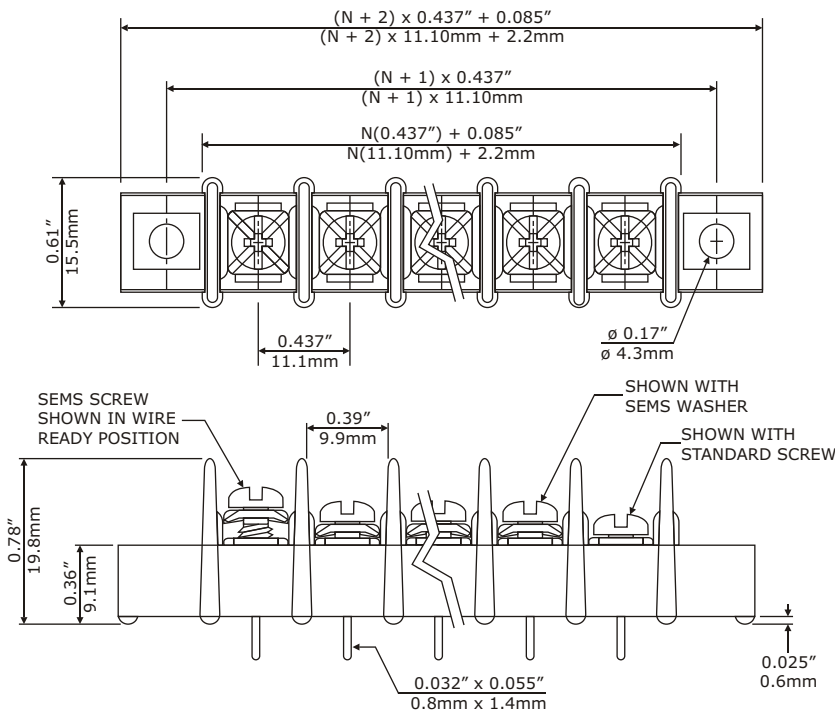
**Current Rating:**

20 Amps

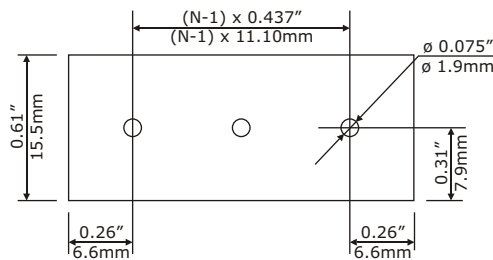
**Wire Range:**

12-24AWG

### DIMENSIONAL REFERENCE



#### P.C.B. LAYOUT



N = Number of contacts



#### Safety Approval:



### PART NUMBERING

Part Number / Ordering Information

**70XX-XX-X-XX-XXXX**

Terminal Styles

NUMBER OF TERMINALS

Mounting Hole Options

OPTION CODE (IF APPLICABLE)

#### SCREW OPTIONS

- 00 - No Screws
- 01 - Steel Zinc Plated
- 02 - Steel Zinc Plated Sems
- 03 - Brass Nickel Plated
- 04 - Brass Nickel Plated Sems
- 05 - Stainless Steel Phillips Head
- 11 - Steel Zinc Captive
- 12 - Steel Zinc Sems Captive
- 13 - Brass Nickel Captive
- 14 - Brass Nickel Sems Captive
- 21 - Steel Zinc Captive, Wire Ready
- 22 - Steel Zinc Sems Captive, Wire Ready
- 23 - Brass Nickel Captive, Wire Ready
- 24 - Brass Nickel Sems Captive, Wire Ready
- 46 - Steel Sems Uncaptive, Wire Ready

# SERIES 8600 DUAL LEVEL

.375" PITCH, CENTERLINE SPACING

## TECHNICAL DATA

### MECHANICAL

**Torque:**

10 lbs-in. Max.

**Operating temperature:**

-40°C to +105°C

-40°F to +221°F

**Soldering temperature:**

260°C, 500°F for 5 seconds max

### MATERIAL

**Contact:**

Brass, Tin Plated

**Screw:**

#6-32, Combo Head

**Insulator body:**

Polycarbonate, UL 94V-0, Black

### ELECTRICAL

**Voltage rating:**

300VAC

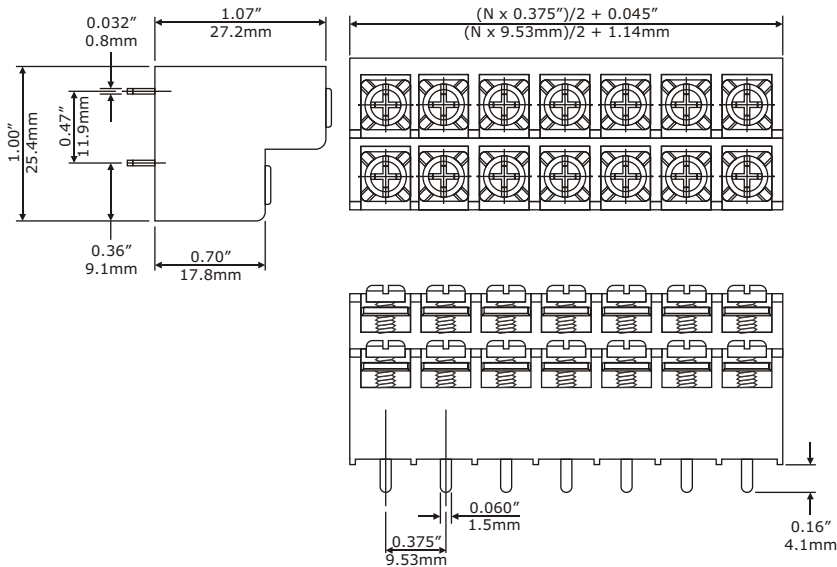
**Current rating:**

20 Amps

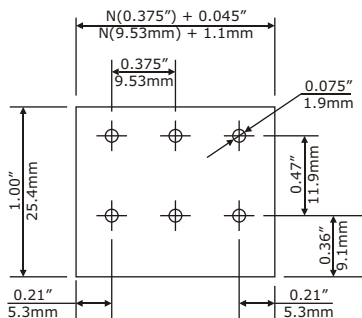
**Wire range:**

12-22AWG

## DIMENSIONAL REFERENCE



### P.C.B. LAYOUT



N = Number of contacts



Safety Approval:



## PART NUMBERING

Part Number / Ordering Information

**8602-XX-N-XX**

NUMBER OF POSITIONS  
20 Maximum

### SCREW OPTIONS

- 00 - No Screws
- 01 - Steel Zinc Plated
- 02 - Steel Zinc Plated Sems
- 03 - Brass Nickel Plated
- 04 - Brass Nickel Plated Sems
- 12 - Captive Steel Sems, Captive
- 14 - Captive Brass Sems, Captive
- 22 - Steel Zinc Sems Captive, Wire Ready
- 24 - Brass Nickel Sems Captive, Wire Ready

# PLUGGABLE SOCKET

## 0.325" SPACING FOR 5000 AND TB5 SERIES

### TECHNICAL DATA

#### MECHANICAL

**Operating Temperature:**

-40°C to +105°C

-40°F to +221°F

**Soldering Temperature:**

260°C, 500°F for 5 seconds max

#### MATERIAL

**Contact:**

PhBz, Tin Plated

**Insulator Body:**

Polyamide, UL 94V-0, Black

#### ELECTRICAL

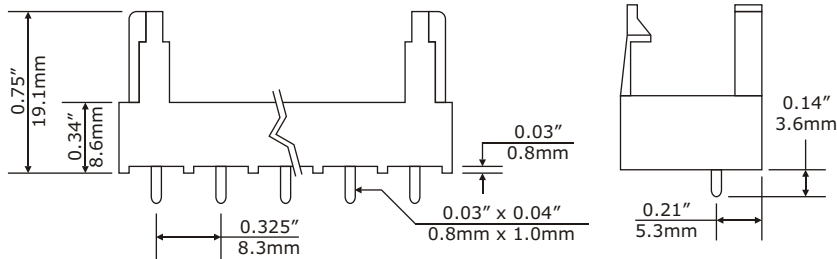
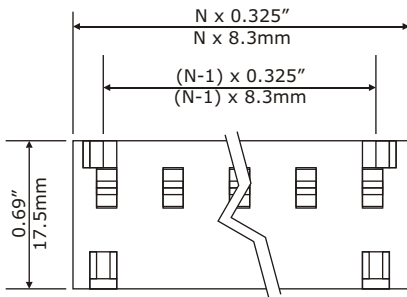
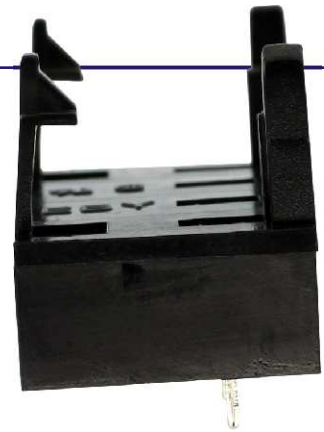
**Voltage Rating:**

300VAC

**Current Rating:**

15 Amps

### DIMENSIONAL REFERENCE



Safety Approval:



### PART NUMBERING

Part Number / Ordering Information

**SK5000-XX**

NUMBER OF  
POSITIONS  
14 Maximum

For Socket with Pre-Installed Terminal Block  
(Series 5000 or TB5)  
Consult the Factory

N = Number of contacts

**EBY Electro, Inc.**

210 Express Street  
Plainview, NY 11803-2423 USA

© Copyright 2007 EBY Electro, Inc.



Electro-Mechanical Components Since 1945

[www.ebyelectro.com](http://www.ebyelectro.com)

Email: [info@ebyelectro.com](mailto:info@ebyelectro.com)

Tel: 516.576.7777 · Fax: 516.576.1414

# PLUGGABLE SOCKET

## 0.325" SPACING FOR 5000 AND TB5 SERIES

### TECHNICAL DATA

#### MECHANICAL

**Operating Temperature:**

-40°C to +105°C

-40°F to +221°F

**Soldering Temperature:**

260°C, 500°F for 5 seconds max

#### MATERIAL

**Contact:**

PhBz, Tin Plated

**Insulator Body:**

Polyamide, UL 94V-0, Black

#### ELECTRICAL

**Voltage Rating:**

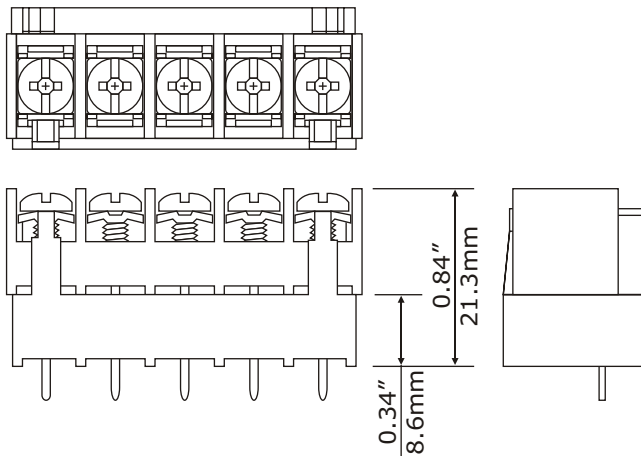
300VAC

**Current Rating:**

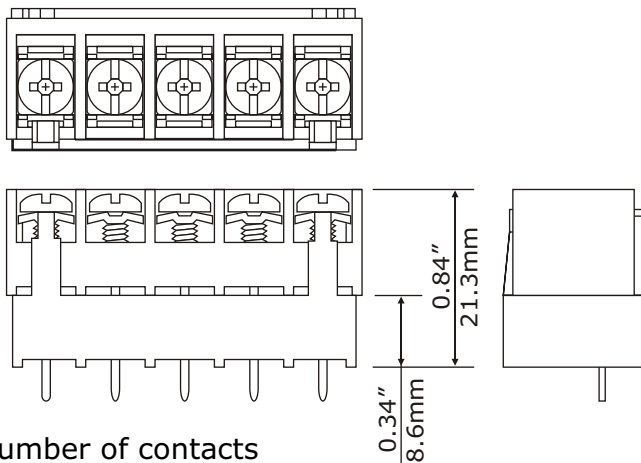
15 Amps

### DIMENSIONAL REFERENCE

Socket with 5000 Block



Socket with TB5 Block



N = Number of contacts



Safety Approval:



### PART NUMBERING

Part Number / Ordering Information

**SK5000-XX**

NUMBER OF  
POSITIONS  
14 Maximum

For Socket with Pre-Installed Terminal Block  
(Series 5000 or TB5)  
Consult the Factory

# SERIES TB4

.250" PITCH, TRI-BARRIER

## TECHNICAL DATA

### MECHANICAL

**Torque:**

6 lbs-in. Max.

**Operating Temperature:**

-40°C to +105°C

-40°F to +221°F

**Soldering Temperature:**

260°C, 500°F for 5 seconds max

### MATERIAL

**Contact:**

Brass, Tin Plated

**Screw:**

#3-48, Combo Head

**Insulator Body:**

UL 94V-0 Thermoplastic, Black

### ELECTRICAL

**Voltage Rating:**

150VAC

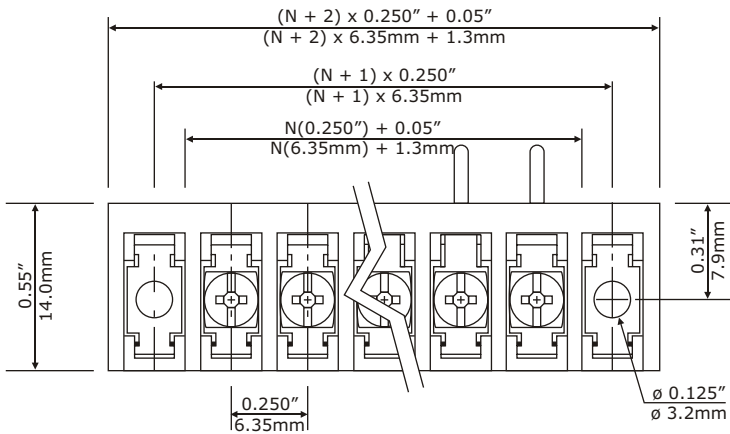
**Current Rating:**

10 Amps

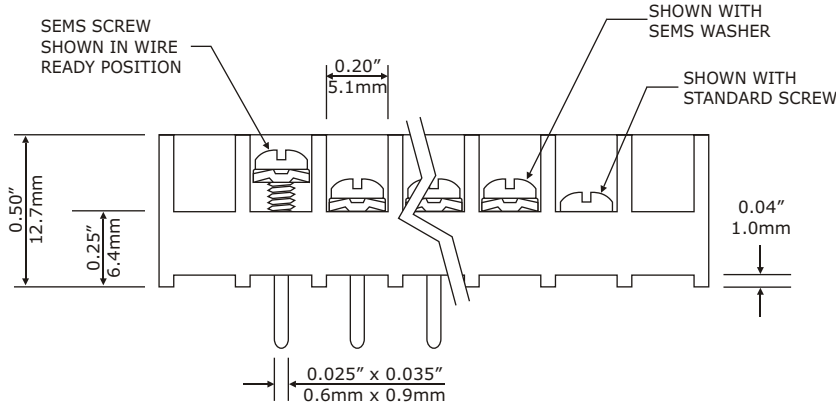
**Wire Range:**

18-22AWG

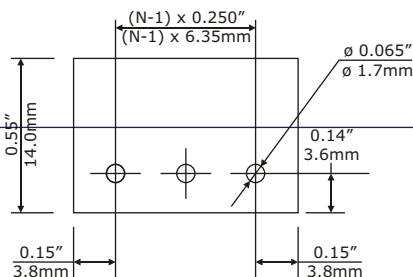
## DIMENSIONAL REFERENCE



(Shown with Right Angle PC Mount)



### P.C.B. LAYOUT



N = Number of contacts  
EBY Electro, Inc.

210 Express Street  
Plainview, NY 11803-2423 USA  
© Copyright 2007 EBY Electro, Inc.



Electro-Mechanical Components Since 1945



Safety Approval:



## PART NUMBERING

Part Number / Ordering Information

**XX-TB4-XX-X-XX**

NUMBER OF  
TERMINALS

Terminal  
Styles

Mounting Hole  
Options

### SCREW OPTIONS

- 00 - No Screws
- 02 - Steel Zinc Plated Sems
- 46 - Steel Sems Uncaptive, Wire Ready

[www.ebyelectro.com](http://www.ebyelectro.com)

Email: [info@ebyelectro.com](mailto:info@ebyelectro.com)

Tel: 516.576.7777 · Fax: 516.576.1414

# SERIES TB5

## .325" PITCH, TRI-BARRIER

### TECHNICAL DATA

#### MECHANICAL

**Torque:**

10 lbs-in. Max.

**Operating Temperature:**

-40°C to +105°C

-40°F to +221°F

**Soldering Temperature:**

260°C, 500°F for 5 seconds max

#### MATERIAL

**Contact:**

Brass, Tin Plated

**Screw:**

#6-32, Combo Head

**Insulator Body:**

Polycarbonate, UL 94V-0, Black

#### ELECTRICAL

**Voltage Rating:**

300VAC

**Current Rating:**

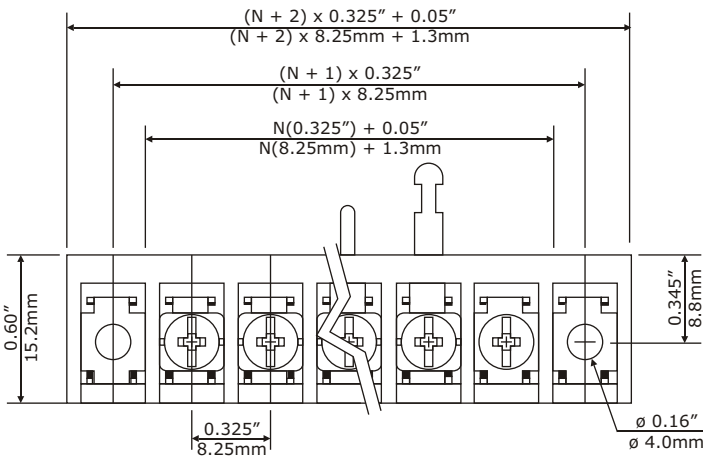
20 Amps

**Wire Range:**

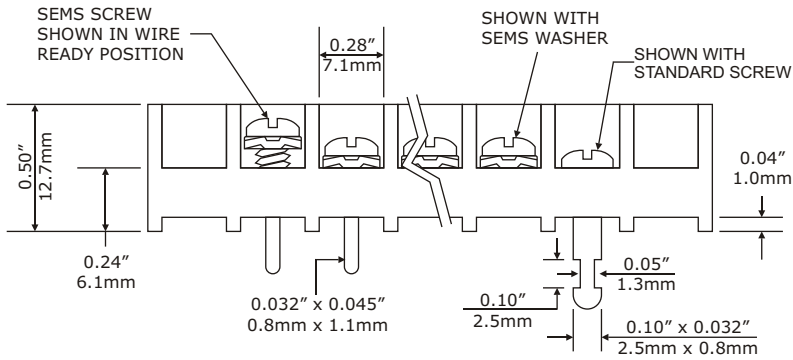
12-22AWG

### DIMENSIONAL REFERENCE

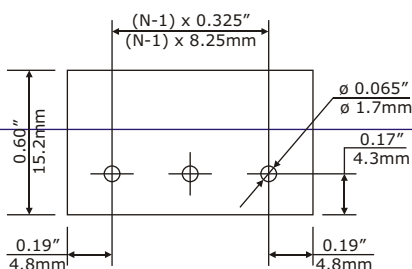
(Shown with Right Angle PC Mount and Solder Turret)



(Shown with Optional Mounting Heads)



#### P.C.B. LAYOUT



Safety Approval:



### PART NUMBERING

Part Number / Ordering Information

**XX-TB5-XX-X-XX-XXXX**

NUMBER OF TERMINALS

Terminal Styles

OPTION CODE (IF APPLICABLE)

Mounting Hole Options

#### SCREW OPTIONS

- 00 - No Screws
- 01 - Steel Zinc Plated
- 02 - Steel Zinc Plated Sems
- 03 - Brass Nickel Plated
- 04 - Brass Nickel Plated Sems
- 05 - Stainless Steel Phillips Head
- 11 - Steel Zinc Captive
- 12 - Steel Zinc Sems, Captive
- 13 - Brass Nickel Captive
- 14 - Brass Nickel Sems, Captive
- 21 - Steel Zinc Captive, Wire Ready
- 22 - Steel Zinc Sems Captive, Wire Ready
- 23 - Brass Nickel Captive, Wire Ready
- 24 - Brass Nickel Sems Captive, Wire Ready
- 46 - Steel Sems Uncaptive, Wire Ready

N = Number of contacts  
EBY Electro, Inc.

210 Express Street  
Plainview, NY 11803-2423 USA  
© Copyright 2007 EBY Electro, Inc.



Electro-Mechanical Components Since 1945

[www.ebyelectro.com](http://www.ebyelectro.com)

Email: [info@ebyelectro.com](mailto:info@ebyelectro.com)

Tel: 516.576.7777 · Fax: 516.576.1414

# SERIES TB6

## .375" PITCH, TRI-BARRIER

### TECHNICAL DATA

#### MECHANICAL

**Torque:**

10 lbs-in. Max.

**Operating Temperature:**

-40°C to +105°C

-40°F to +221°F

**Soldering Temperature:**

260°C, 500°F for 5 seconds max

#### MATERIAL

**Contact:**

Brass, Tin Plated

**Screw:**

#6-32, Combo Head

**Insulator Body:**

Polycarbonate, UL 94V-0, Black

#### ELECTRICAL

**Voltage Rating:**

300VAC

**Current Rating:**

20 Amps

**Wire Range:**

12-24AWG

### DIMENSIONAL REFERENCE



Safety Approval:



### PART NUMBERING

Part Number / Ordering Information

**XX-TB6-XX-X-XX-XXXX**

NUMBER OF  
TERMINALS

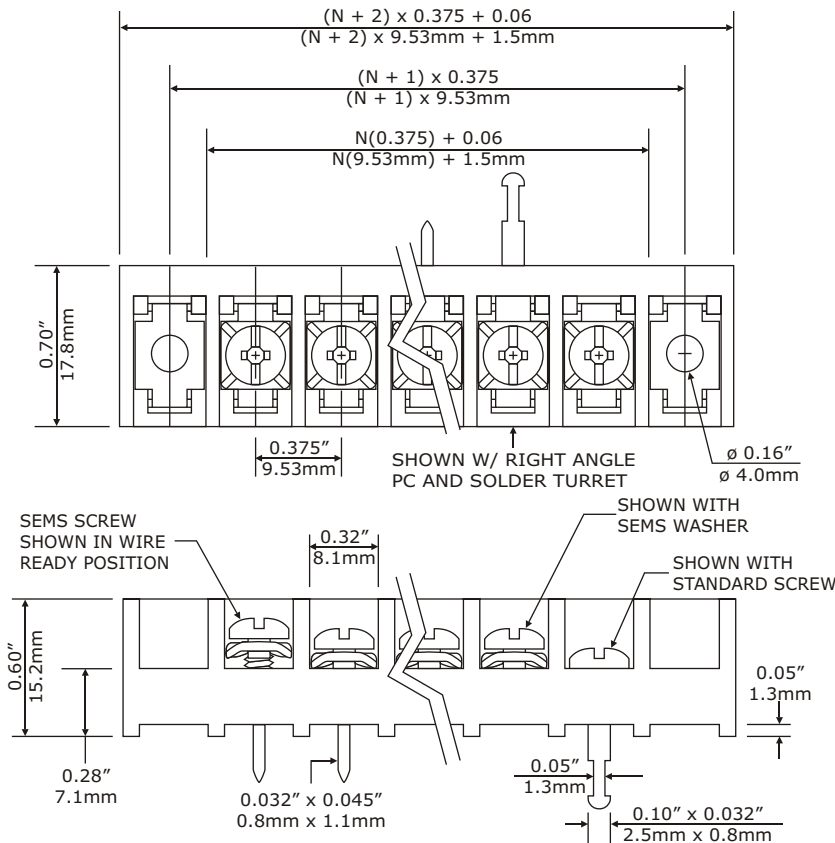
Terminal  
Styles

OPTION CODE  
(IF APPLICABLE)

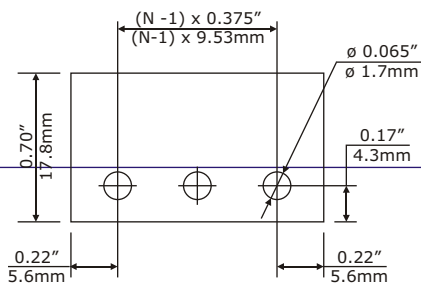
Mounting Hole  
Options

#### SCREW OPTIONS

- 00 - No Screws
- 01 - Steel Zinc Plated
- 02 - Steel Zinc Plated Sems
- 03 - Brass Nickel Plated
- 04 - Brass Nickel Plated Sems
- 05 - Stainless Steel Phillips Head
- 11 - Steel Zinc Captive
- 12 - Steel Zinc Sems, Captive
- 13 - Brass Nickel Captive
- 14 - Brass Nickel Sems, Captive
- 21 - Steel Zinc Captive, Wire Ready
- 22 - Steel Zinc Sems Captive, Wire Ready
- 23 - Brass Nickel Captive, Wire Ready
- 24 - Brass Nickel Sems Captive, Wire Ready
- 46 - Steel Sems Uncaptive, Wire Ready



#### P.C.B. LAYOUT



N = Number of contacts

EBY Electro, Inc.

210 Express Street  
Plainview, NY 11803-2423 USA

© Copyright 2007 EBY Electro, Inc.



Electro-Mechanical Components Since 1945

[www.ebyelectro.com](http://www.ebyelectro.com)

Email: [info@ebyelectro.com](mailto:info@ebyelectro.com)

Tel: 516.576.7777 · Fax: 516.576.1414

# SERIES TB7

## .437" PITCH, TRI-BARRIER

### TECHNICAL DATA

#### MECHANICAL

**Torque:**

12 lbs-in. Max.

**Operating Temperature:**

-40°C to +105°C

-40°F to +221°F

**Soldering Temperature:**

260°C, 500°F for 5 seconds max

#### MATERIAL

**Contact:**

Brass, Tin Plated

**Screw:**

#8-32, Combo Head

**Insulator Body:**

Polycarbonate, UL 94V-0, Black

#### ELECTRICAL

**Voltage Rating:**

300VAC

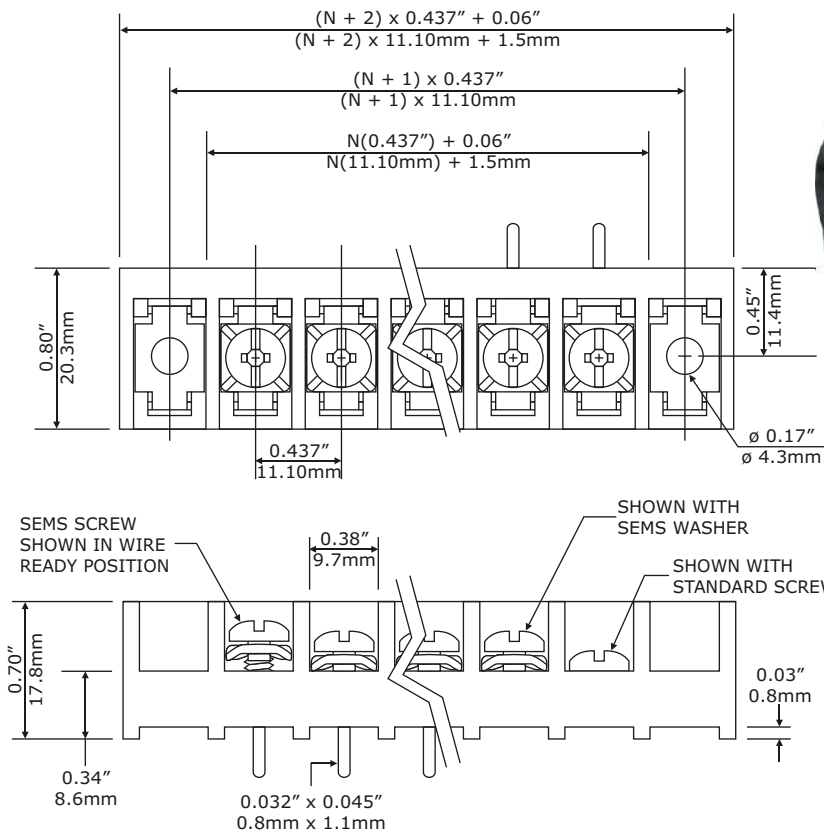
**Current Rating:**

30 Amps

**Wire Range:**

10-18AWG

### DIMENSIONAL REFERENCE



Safety Approval:



### PART NUMBERING

Part Number / Ordering Information

**XX-TB7-XX-X-XX**

NUMBER OF TERMINALS

Terminal Styles

Mounting Hole Options

#### SCREW OPTIONS

- 00 - No Screws
- 01 - Steel Zinc Plated
- 02 - Steel Zinc Plated Sems
- 03 - Brass Nickel Plated
- 04 - Brass Nickel Plated Sems
- 05 - Stainless Steel Phillips Head
- 11 - Steel Zinc Captive
- 12 - Steel Zinc Sems, Captive
- 13 - Brass Nickel Captive
- 14 - Brass Nickel Sems, Captive
- 21 - Steel Zinc Captive, Wire Ready
- 22 - Steel Zinc Sems Captive, Wire Ready
- 23 - Brass Nickel Captive, Wire Ready
- 24 - Brass Nickel Sems Captive, Wire Ready
- 46 - Steel Sems Uncaptive, Wire Ready

N = Number of contacts

EBY Electro, Inc.

210 Express Street  
Plainview, NY 11803-2423 USA

© Copyright 2007 EBY Electro, Inc.



Electro-Mechanical Components Since 1945

[www.ebyelectro.com](http://www.ebyelectro.com)

Email: [info@ebyelectro.com](mailto:info@ebyelectro.com)

Tel: 516.576.7777 · Fax: 516.576.1414



# SERIES TC7

## .437" PITCH, TRI-BARRIER, CLOSED BOTTOM

### TECHNICAL DATA

#### MECHANICAL

**Torque:**

12 lbs-in. Max.

**Operating Temperature:**

-40°C to +105°C

-40°F to +221°F

**Soldering Temperature:**

260°C, 500°F for 5 seconds max

#### MATERIAL

**Contact:**

Brass, Tin Plated

**Screw:**

#8-32, Combo Head

**Insulator Body:**

Polycarbonate, UL 94V-0, Black

#### ELECTRICAL

**Voltage Rating:**

300VAC

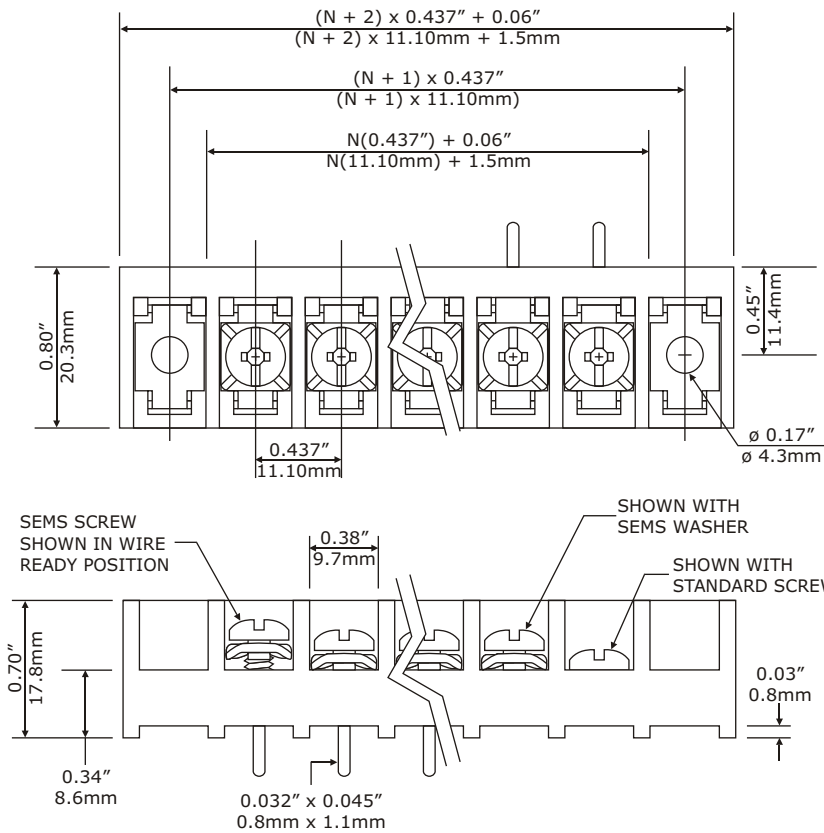
**Current Rating:**

30 Amps

**Wire Range:**

10-18AWG

### DIMENSIONAL REFERENCE



Safety Approval:



### PART NUMBERING

Part Number / Ordering Information

**XX-TC7-XX-X-XX**

NUMBER OF TERMINALS

Terminal Styles

Mounting Hole Options

#### SCREW OPTIONS

- 00 - No Screws
- 01 - Steel Zinc Plated
- 02 - Steel Zinc Plated Sems
- 03 - Brass Nickel Plated
- 04 - Brass Nickel Plated Sems
- 05 - Stainless Steel Phillips Head
- 11 - Steel Zinc Captive
- 12 - Steel Zinc Sems, Captive
- 13 - Brass Nickel Captive
- 14 - Brass Nickel Sems, Captive
- 21 - Steel Zinc Captive, Wire Ready
- 22 - Steel Zinc Sems Captive, Wire Ready
- 23 - Brass Nickel Captive, Wire Ready
- 24 - Brass Nickel Sems Captive, Wire Ready
- 46 - Steel Sems Uncaptive, Wire Ready

N = Number of contacts

EBY Electro, Inc.

210 Express Street  
Plainview, NY 11803-2423 USA

© Copyright 2007 EBY Electro, Inc.



Electro-Mechanical Components Since 1945

[www.ebyelectro.com](http://www.ebyelectro.com)

Email: [info@ebyelectro.com](mailto:info@ebyelectro.com)

Tel: 516.576.7777 · Fax: 516.576.1414

