

TP-106 Series

Oval Profile Printed Circuit Test Points



Home

>> [Products](#)

>> [Through Hole](#)

[Surface Mount](#)

[Custom Wireform](#)

[News](#)

[About Us](#)

[Distributor &
Representative](#)

[Search](#)

[Contact Us](#)

[Check Stock](#)

[Compliance](#)

[Site Map](#)

Specifications

Materials:

Contact Material: .015" x .030" phosphor bronze #510 alloy

Finish: .0001" Matte Tin over .00005" Nickel

Standoff: 15% glass filled polyester

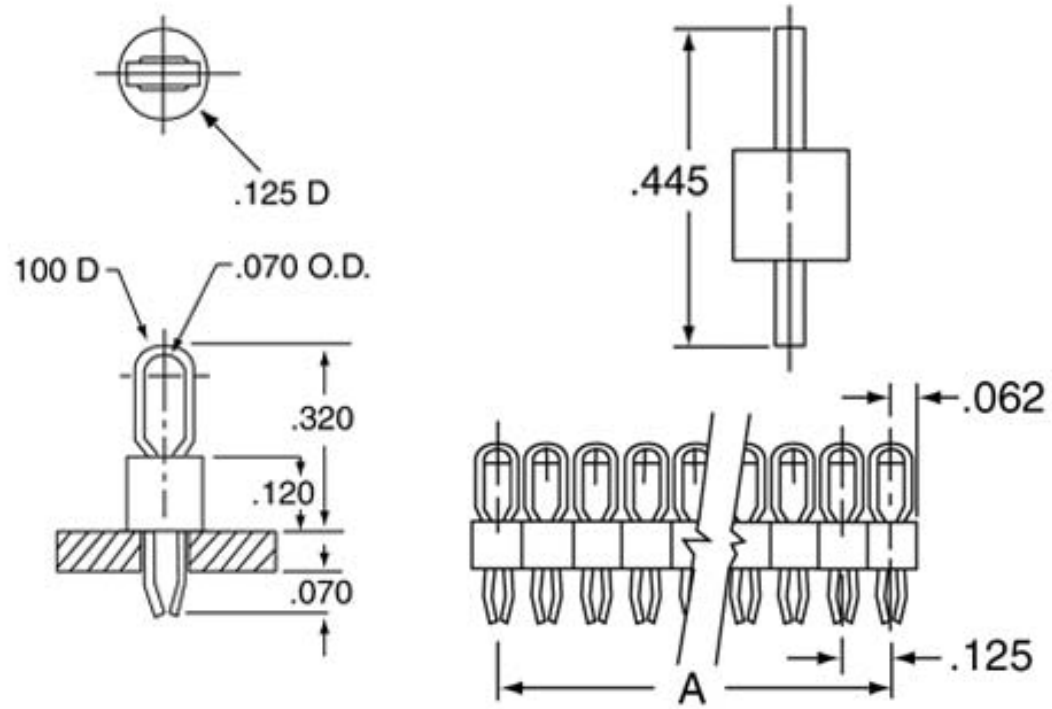
Electrical:

Mounting Holes: .063" diameter hole

Special Notations:

The specifically designed hand tool, part number 1060, speeds cutting, gripping and insertion of TP-106 test points.

**TP-106
Contacts**

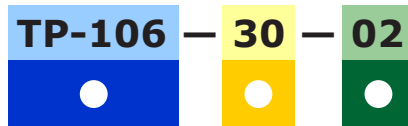


TP-106 Dimensions

Part Number	Dimension A	Part Number	Dimension A
TP-106-01	NA	TP-106-16	1.875
TP-106-02	.125	TP-106-17	2.000
TP-106-03	.250	TP-106-18	2.125
TP-106-04	.375	TP-106-19	2.250
TP-106-05	.500	TP-106-20	2.375
TP-106-06	.625	TP-106-21	2.500
TP-106-07	.750	TP-106-22	2.625
TP-106-08	.875	TP-106-23	2.750
TP-106-09	1.000	TP-106-24	2.875
TP-106-10	1.125	TP-106-25	3.000
TP-106-11	1.250	TP-106-26	3.125
TP-106-12	1.375	TP-106-27	3.250
TP-106-13	1.500	TP-106-28	3.375
TP-106-14	1.625	TP-106-29	3.500
TP-106-15	1.750	TP-106-30	3.625

Ordering Information

Example:



● **Series Designation:**
TP-106

● **Number of Positions:**
01 through 30

● **Color:**

00 = Black	05 = Green
01 = Brown	06 = Blue
02 = Red	07 = Purple
03 = Orange	08 = Gray
04 = Yellow	09 = White

Product Description

The new TP-106 series of oval profile, color-coded printed circuit board test points from Components Corporation represents a significant, yet simple, solution to the board level testing of today's highly populated printed wiring boards. With a choice of ten colors, TP-106 test point may be utilized as numeric points to represent the standard electronic color code, enhance visibility, or designate polarity. The oval loop design of the test point contact provides a profile which stands above crowded circuitry, offers a positive anchor for spring loaded clips or probe tips and is large enough to terminate conventional alligator clips. These features enhance the reliability of obtaining correct test readings while reducing the potential for damage to adjacent circuitry caused by shorted test probes.

The color-coded standoff of the TP-106 is molded from 30% glass filled polyester which is designed to withstand the temperatures of production wave soldering processes and resist board cleaning solvents or chemicals. The oval contact element is precision formed from matte tin over nickel plated phosphor bronze spring alloy, and its unique leg design provides positive retention in the mounting hole during assembly operations and soldering.

TP-106 test points are manufactured in a "breakaway" strip format which allows them to be specified in any number of positions, from 1 to 30, at 0.125", mounting centers. This exclusive design feature provides the easy placement of multiple, tandem mounted test points in one assembly operation. The TP-106 user has the option of procuring these units pre-cut to specified position or obtaining them in full 30 position strips and cutting them to desired number of tandem test points through use of a convenient hand tool.

Certificate of Compliance with Directive 2002/95/EC RoHS

This is to certify that Components Corporation designs, manufactures and supplies products to our customers that are in compliance with directive 2002/95/EC. This also pertains to procurement of raw material, component parts and processes.



Top
of Page

[Open this page as a PDF document](#)

Components Corporation

6 Kinsey Place Denville, NJ 07834 USA

voice: 866.4.COMPCO **fax:** 973.361.5801 **email:** sales@componentscorp.com

©2003 Components Corporation. All Rights Reserved. [Legal Statement](#). [Privacy Notice](#).