

## ATP-402 Series

Auto Insertable, Tape & Reel Test Points

[Home](#)

[>>Products](#)

[>>Through Hole](#)  
[Surface Mount](#)  
[Custom Wireform](#)

[News](#)

[About Us](#)

[Distributor &  
Representative  
Search](#)

[Contact Us](#)

[Check Stock](#)

[Compliance](#)

[Site Map](#)

### Specifications

#### Materials:

**Contact Material:** .020" diameter copper wire (24 AWG)

**Finish:** Bright, electro-tin

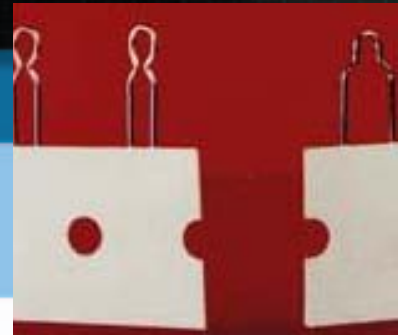
#### Electrical:

**Mounting Holes:** .035" to .040" diameter, plated through

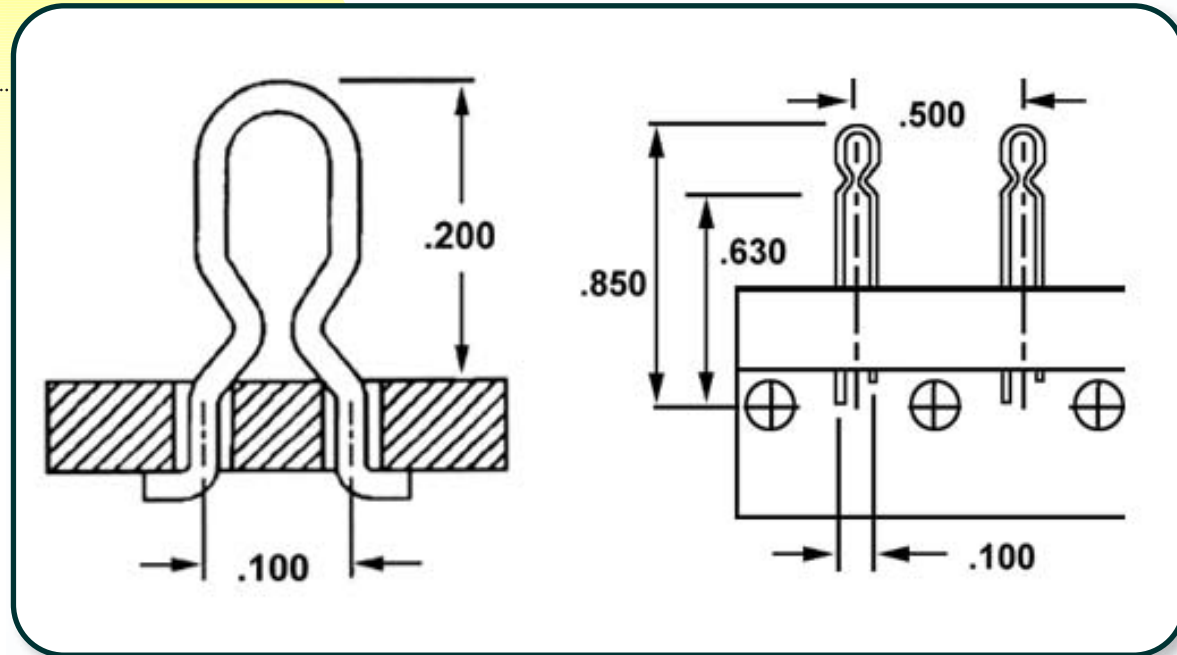
#### Special Notations:

**Standard Pack:** 5000 pieces per reel

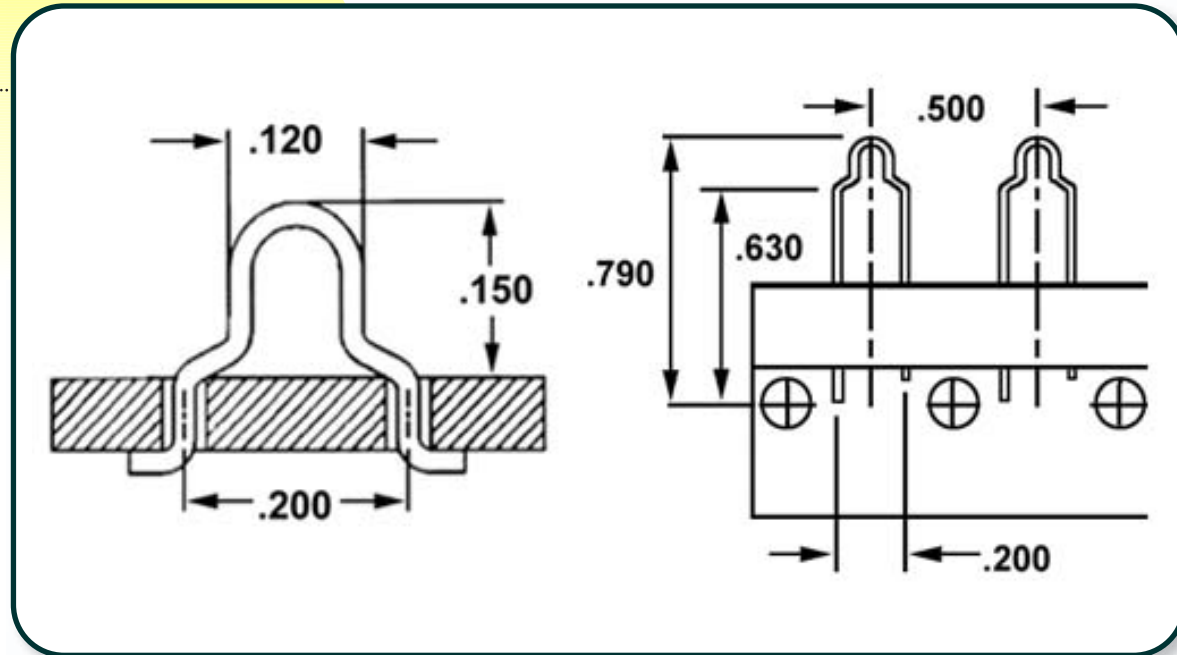
**Taping Standard:** Universal Instruments Specification #GS-187E



**ATP-402-10  
Contacts**



**ATP-402-20  
Contacts**



## Ordering Information

Example:

**ATP-402** – **10**



**Series Designation:**  
ATP-402

**Lead Spacing:**  
10 = .100"  
20 = .200"

## Product Description

ATP-402 series test points provide a convenient loop profiled anchor for the board level "troubleshooting" of today's densely populated electronic circuits in a configuration which is fully compatible with automated, mass assembly processes. These units are supplied on a tape-and-reel format which conforms to most radial leaded, component insertion machines and complies with the taping specifications of Universal Instruments Corporation.

Within the ATP-402 series there are two choices of test point. The ATP-402-10 provides an oval configured loop and has mounting leads on .100" centers. The ATP-402-20 is a lower profiled device with an "above board" height of .150" and mounting leads on .200" centers. Both of these units are formed from .020" diameter copper wire, have an electro tin finish and are packaged on standard reels of 5000.

### **Certificate of Compliance with Directive 2002/95/EC RoHS**

This is to certify that Components Corporation designs, manufactures and supplies products to our customers that are in compliance with directive 2002/95/EC. This also pertains to procurement of raw material, component parts and processes.



**Open this page as a PDF document**

**Components Corporation**

6 Kinsey Place Denville, NJ 07834 USA

**voice:** 866.4.COMPO **fax:** 973.361.5801 **email:** sales@componentscorp.com

©2003 Components Corporation. All Rights Reserved. [Legal Statement](#). [Privacy Notice](#).