

You can contain EMI/RFI radiation at its source with our cost-effective line of RF Cans. Manufactured from sheet metal, they have removable covers that give you easy access to your electronic assemblies.

RF Cans are tin plated to help you:

- Prevent oxidation
- Aid solderability
- Increase surface conductivity
- Add radiation reflection

#### Materials

Base, cover and dividers

- Sheet metal, tin plated (HT)

Please see each ordering page for specific information.

#### Dividers

Enclosures ER1 through ER4 have internal dividers that allow for convenient compartmentalization.

#### Packaging

Standard packs are listed on each ordering page.

In a standard pack of one, each enclosure is shrink wrapped individually.

In a standard pack of five, enclosures are shrink wrapped in one package.

# RF Cans

## EMI/RFI - ER1

An electrolytic tin plated steel enclosure with two slide-on covers, it has one removable horizontal divider that splits the enclosure into two sections. It also has vertical dividers with holes for wiring.

### Each Kit Includes

| Base | Cover | Screws |
|------|-------|--------|
| 1    | 2     | 4-SC10 |

### Assembly

1. If desired, place the horizontal divider onto the stamped supports in the base.
2. Slide the vertical dividers into the dimpled guides as desired.
3. Slide the cover over the base's flanges.
4. Insert and tighten the 4 panhead, self-tapping screws to secure the cover.

### Materials

Base, covers and dividers: Sheet metal, tin plated (HT)

Screws: Steel, Nickel Plated (SN)

### Standard Color

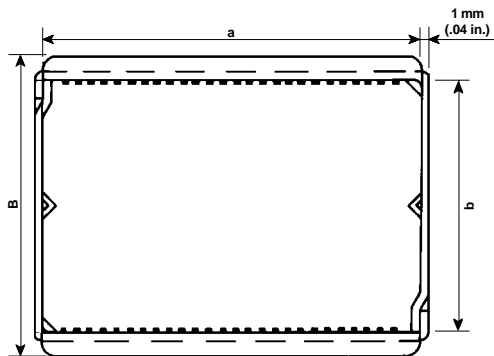
Silver



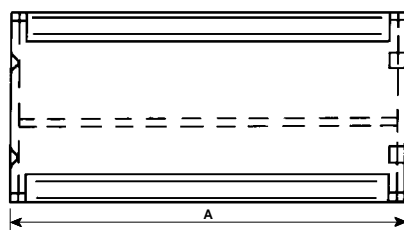
### Ordering Information

### External Dimensions mm (in.) and Special Notes

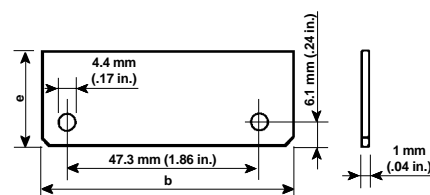
| Type    | Cat. No. | Std. Pk. | A             | B           | C           |
|---------|----------|----------|---------------|-------------|-------------|
| ER1-395 | 94.490   | 1        | 62.0 (2.44)   | 76.0 (2.99) | 36.0 (1.42) |
| ER1-396 | 94.491   | 1        | 102.0 (4.02)  | 76.0 (2.99) | 36.0 (1.42) |
| ER1-397 | 94.492   | 1        | 162.0 (6.38)  | 76.0 (2.99) | 36.0 (1.42) |
| ER1-398 | 94.493   | 1        | 222.0 (8.74)  | 76.0 (2.99) | 36.0 (1.42) |
| ER1-399 | 94.494   | 1        | 282.0 (11.10) | 76.0 (2.99) | 36.0 (1.42) |



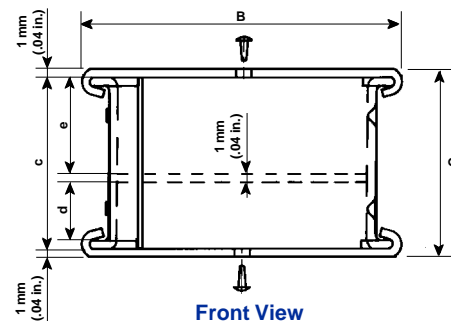
Top View



Side View



Vertical Divider



Front View

| Internal Dimensions mm (in.) |               |             |             |             |             |
|------------------------------|---------------|-------------|-------------|-------------|-------------|
| Type                         | a             | b           | c           | d           | e           |
| ER1-395                      | 60.0 (2.36)   | 65.0 (2.56) | 34.0 (1.34) | 12.0 (0.47) | 21.0 (0.83) |
| ER1-396                      | 100.0 (2.94)  | 65.0 (2.56) | 34.0 (1.34) | 12.0 (0.47) | 21.0 (0.83) |
| ER1-397                      | 160.0 (6.30)  | 65.0 (2.56) | 34.0 (1.34) | 12.0 (0.47) | 21.0 (0.83) |
| ER1-398                      | 220.0 (8.66)  | 65.0 (2.56) | 34.0 (1.34) | 12.0 (0.47) | 21.0 (0.83) |
| ER1-399                      | 280.0 (11.02) | 65.0 (2.56) | 34.0 (1.34) | 12.0 (0.47) | 21.0 (0.83) |

| Enclosure Type | Vertical Dividers Quantity | Horizontal Supports Quantity | Vertical Guides Quantity |
|----------------|----------------------------|------------------------------|--------------------------|
| ER1-395        | 2                          | 4                            | 14                       |
| ER1-396        | 6                          | 6                            | 24                       |
| ER1-397        | 8                          | 8                            | 36                       |
| ER1-398        | 10                         | 10                           | 52                       |
| ER1-399        | 12                         | 14                           | 70                       |

Please see page 84 for information on screws.

Please see page 82 for information on accessories.

Please see page 5 for information on packaging.

## EMI/RFI - ER2

A hot tin plated sheet metal enclosure, it has a snap-on, finger-flanged cover and vertical dividers. The dividers have a hole and cutout for wiring.

### Each Kit Includes

| Base | Cover | Other Dividers |
|------|-------|----------------|
| 1    | 1     |                |

### Assembly

1. If desired, slide the vertical dividers into the slots.
2. Snap the flanged cover onto the base.

### Materials

Base, covers and dividers: Sheet metal, hot tin plated (HT)

### Standard Color

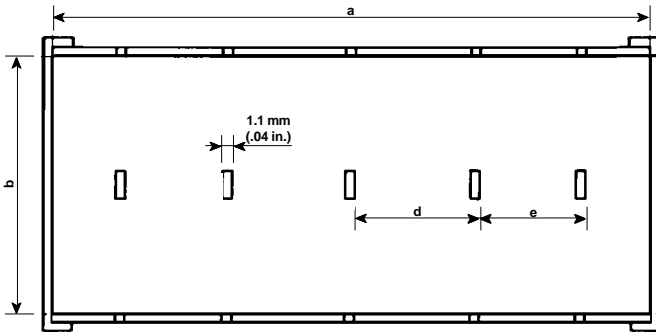
Silver



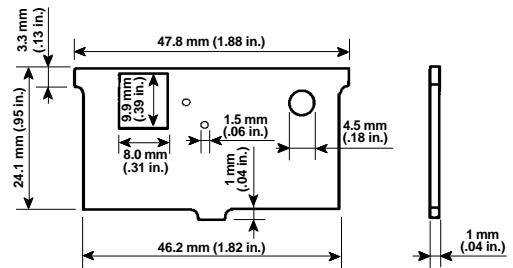
### Ordering Information

### External Dimensions mm (in.) and Special Notes

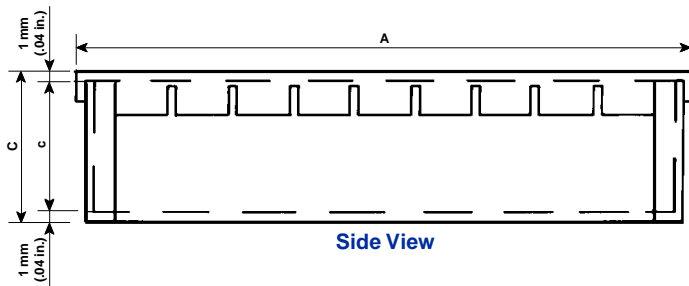
| Type    | Cat. No. | Std. Pk. | A            | B           | C           |
|---------|----------|----------|--------------|-------------|-------------|
| ER2-371 | 94.495   | 5        | 54.0 (2.13)  | 50.0 (1.97) | 26.0 (1.02) |
| ER2-372 | 94.496   | 5        | 83.0 (3.27)  | 50.0 (1.97) | 26.0 (1.02) |
| ER2-373 | 94.497   | 5        | 106.0 (4.17) | 50.0 (1.97) | 26.0 (1.02) |
| ER2-374 | 94.498   | 5        | 161.0 (6.34) | 50.0 (1.97) | 26.0 (1.02) |



Top View



Divider



Side View



Front View

| Internal Dimensions mm (in.) |              |             |            |            |            |
|------------------------------|--------------|-------------|------------|------------|------------|
| Type                         | a            | b           | c          | d          | e          |
| ER2-371                      | 50.0 (1.97)  | 46.0 (1.81) | 24.0 (.94) | —          | —          |
| ER2-372                      | 79.0 (3.11)  | 46.0 (1.81) | 24.0 (.94) | 21.0 (.83) | 21.0 (.83) |
| ER2-373                      | 102.0 (4.02) | 46.0 (1.81) | 24.0 (.94) | 21.0 (.83) | 18.5 (.73) |
| ER2-374                      | 157.0 (6.18) | 46.0 (1.81) | 24.0 (.94) | 21.0 (.83) | 13.5 (.53) |

| Enclosure Type | Vertical Dividers Quantity | Horizontal Supports Quantity | Vertical Guides Quantity |
|----------------|----------------------------|------------------------------|--------------------------|
| ER2-371        | 1                          | —                            | —                        |
| ER2-372        | 3                          | —                            | —                        |
| ER2-373        | 5                          | —                            | —                        |
| ER2-374        | 7                          | —                            | —                        |

Please see page 84 for information on screws.

Please see page 82 for information on accessories.

Please see page 5 for information on packaging.

## EMI/RFI - ER3

A hot tin plated sheet metal enclosure, it has a snap-on, finger-flanged cover and vertical dividers. The dividers have holes and a cutout for wiring.

### Each Kit Includes

| Base | Cover | Other Dividers |
|------|-------|----------------|
| 1    | 1     |                |

### Assembly

1. If desired, slide the vertical dividers into the base slots.
2. Snap the flanged cover on the base to secure it.

### Materials

Base, covers and dividers: Sheet metal, tin plated (HT)

### Standard Color

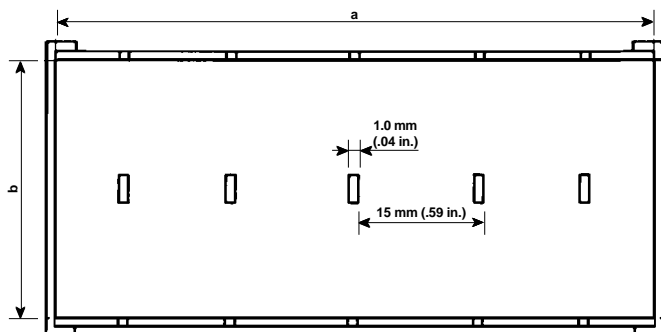
Silver



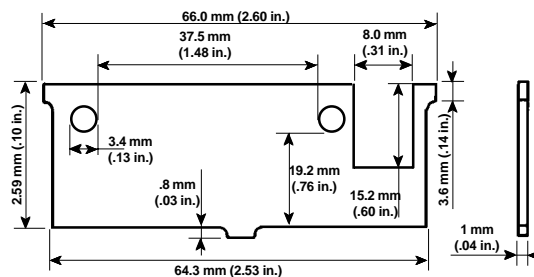
### Ordering Information

### External Dimensions mm (in.) and Special Notes

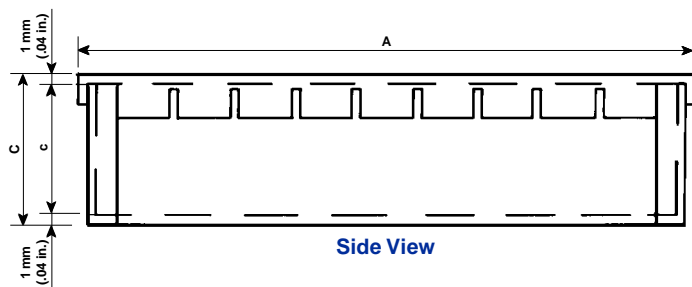
| Type    | Cat. No. | Std. Pk. | A            | B           | C           |
|---------|----------|----------|--------------|-------------|-------------|
| ER3-392 | 94.499   | 5        | 83.0 (3.27)  | 68.0 (2.68) | 28.0 (1.10) |
| ER3-393 | 94.500   | 5        | 122.0 (4.80) | 68.0 (2.68) | 28.0 (1.10) |
| ER3-394 | 94.501   | 5        | 162.0 (6.38) | 68.0 (2.68) | 28.0 (1.10) |



Top View



Divider



Side View



Front View

| Type    | Internal Dimensions mm (in.) |             |             |
|---------|------------------------------|-------------|-------------|
|         | a                            | b           | c           |
| ER3-392 | 79.0 (3.11)                  | 64.0 (2.52) | 26.0 (1.02) |
| ER3-393 | 118.0 (4.65)                 | 64.0 (2.52) | 26.0 (1.02) |
| ER3-394 | 158.0 (6.22)                 | 64.0 (2.52) | 26.0 (1.02) |

| Enclosure Type | Vertical Dividers Quantity | Horizontal Supports Quantity | Vertical Guides Quantity |
|----------------|----------------------------|------------------------------|--------------------------|
| ER3-392        | 3                          | —                            | —                        |
| ER3-393        | 7                          | —                            | —                        |
| ER3-394        | 9                          | —                            | —                        |

Please see page 84 for information on screws.

Please see page 82 for information on accessories.

Please see page 5 for information on packaging.

## EMI/RFI - ER4

A hot tin plated sheet metal enclosure, it has a snap-on, finger-flanged cover and vertical dividers. The dividers have holes for wiring.

### Each Kit Includes

| Base | Cover | Other    |
|------|-------|----------|
| 1    | 1     | Dividers |

### Assembly

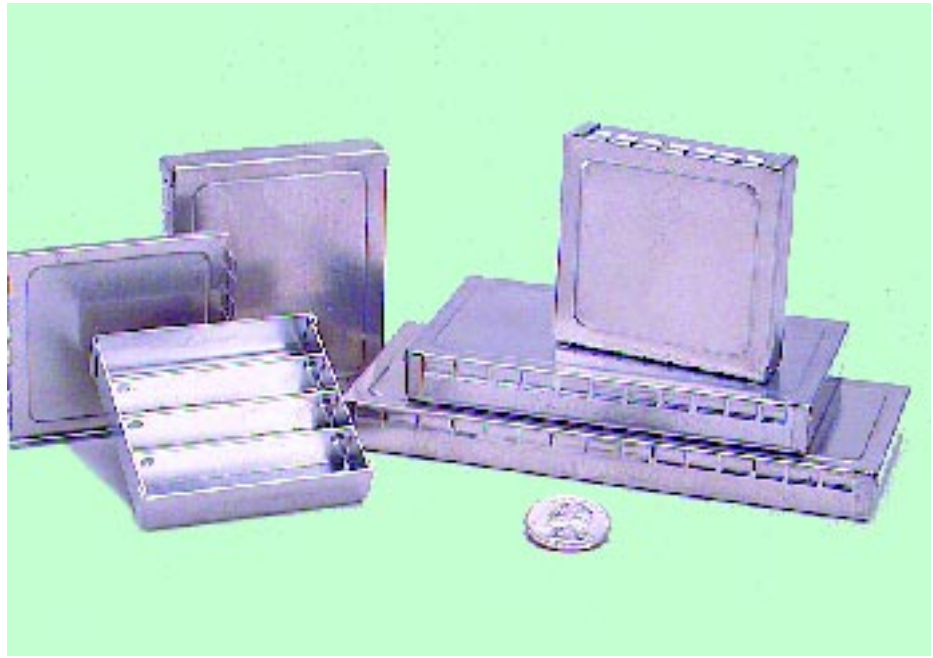
1. If desired, slide the vertical dividers into the base slots.
2. Snap the flanged cover on the base to secure it.

### Materials

Base, covers and dividers: Sheet metal, tin plated (HT)

### Standard Color

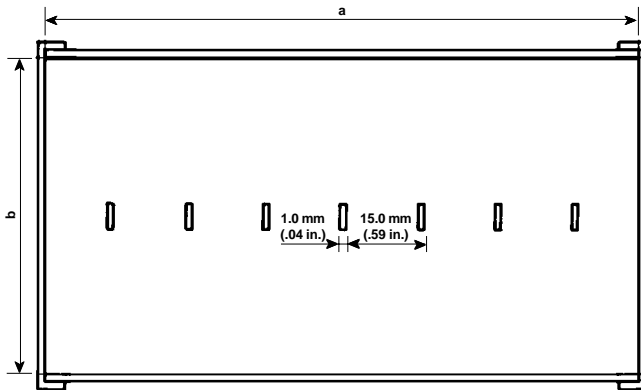
Silver



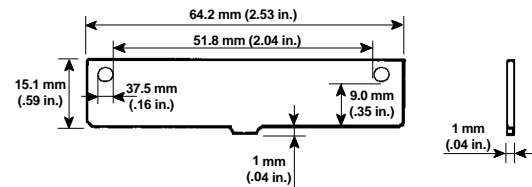
### Ordering Information

### External Dimensions mm (in.) and Special Notes

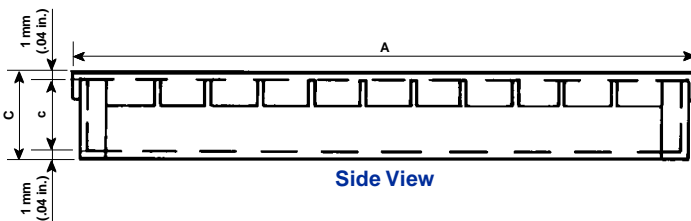
| Type      | Cat. No. | Std. Pk. | A            | B           | C           |
|-----------|----------|----------|--------------|-------------|-------------|
| ER4-1661  | 94.502   | 5        | 67.0 (2.64)  | 68.0 (2.68) | 16.0 (0.63) |
| ER4-1680  | 94.503   | 5        | 82.0 (3.23)  | 68.0 (2.68) | 16.0 (0.63) |
| ER4-16120 | 94.504   | 5        | 121.0 (4.76) | 68.0 (2.68) | 16.0 (0.63) |
| ER4-16160 | 94.505   | 5        | 161.0 (6.34) | 68.0 (2.68) | 16.0 (0.63) |



Top View



Divider



Side View



Front View

| Type      | Internal Dimensions mm (in.) |             |             |
|-----------|------------------------------|-------------|-------------|
|           | a                            | b           | c           |
| ER4-1661  | 63.0 (2.48)                  | 64.0 (2.52) | 14.0 (0.55) |
| ER4-1680  | 78.0 (3.07)                  | 64.0 (2.52) | 14.0 (0.55) |
| ER4-16120 | 117.0 (4.61)                 | 64.0 (2.52) | 14.0 (0.55) |
| ER4-16160 | 157.0 (6.18)                 | 64.0 (2.52) | 14.0 (0.55) |

| Enclosure Type | Vertical Dividers Quantity | Horizontal Supports Quantity | Vertical Guides Quantity |
|----------------|----------------------------|------------------------------|--------------------------|
| ER4-1661       | 3                          | —                            | —                        |
| ER4-1680       | 5                          | —                            | —                        |
| ER4-16120      | 7                          | —                            | —                        |
| ER4-16160      | 9                          | —                            | —                        |

Please see page 84 for information on screws.

Please see page 82 for information on accessories.

Please see page 5 for information on packaging.

## EMI/RFI - ER5

It is a hot tin plated sheet metal enclosure with two snap-on, finger-flanged covers.

### Each Kit Includes

| Base | Cover |
|------|-------|
| 1    | 2     |

### Assembly

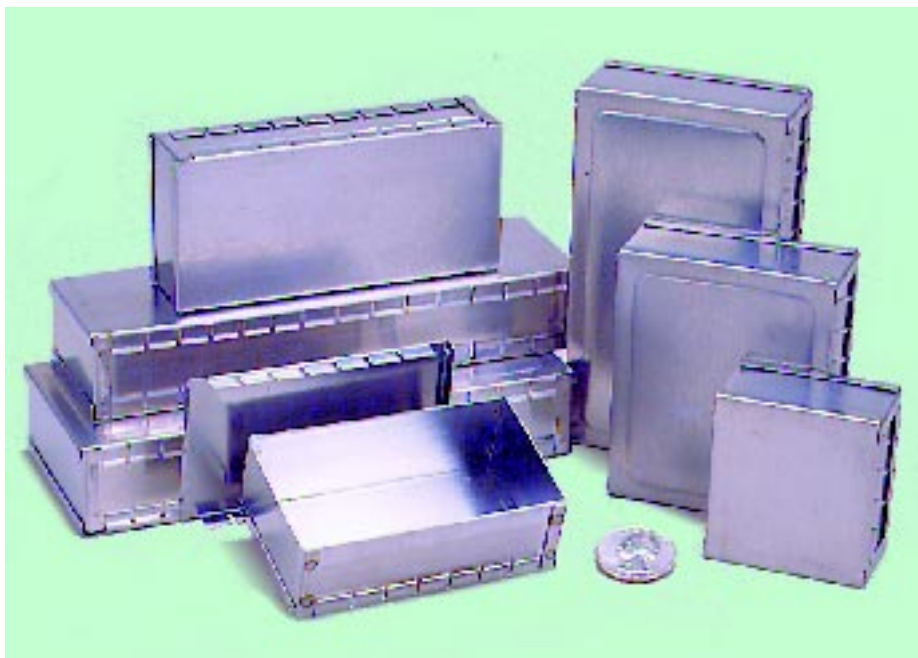
1. Snap both covers onto the base frame.

### Materials

Base, covers and dividers: Sheet metal, tin plated (HT)

### Standard Color

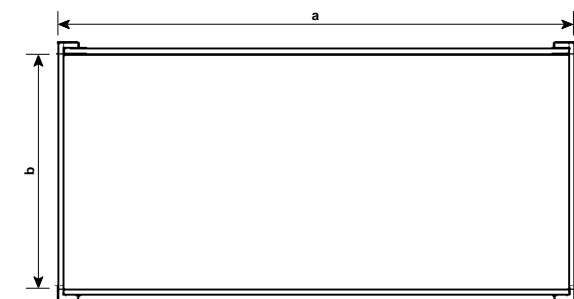
Silver



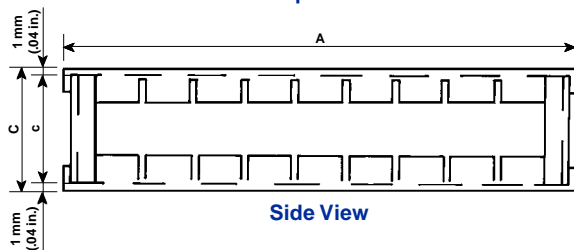
### Ordering Information

### External Dimensions mm (in.) and Special Notes

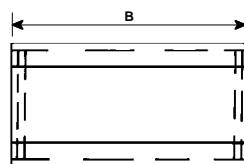
| Type    | Cat. No. | Std. Pk. | A            | B           | C           |
|---------|----------|----------|--------------|-------------|-------------|
| ER5-271 | 94.506   | 5        | 54.0 (2.13)  | 50.0 (1.97) | 27.0 (1.06) |
| ER5-272 | 94.507   | 5        | 83.0 (3.27)  | 50.0 (1.97) | 27.0 (1.06) |
| ER5-273 | 94.508   | 5        | 106.0 (4.17) | 50.0 (1.97) | 27.0 (1.06) |
| ER5-274 | 94.509   | 5        | 161.0 (6.34) | 50.0 (1.97) | 27.0 (1.06) |
| ER5-292 | 94.510   | 5        | 83.0 (3.27)  | 68.0 (2.68) | 27.0 (1.06) |
| ER5-293 | 94.511   | 5        | 122.0 (4.80) | 68.0 (2.68) | 27.0 (1.06) |
| ER5-294 | 94.512   | 5        | 161.0 (6.34) | 68.0 (2.68) | 27.0 (1.06) |



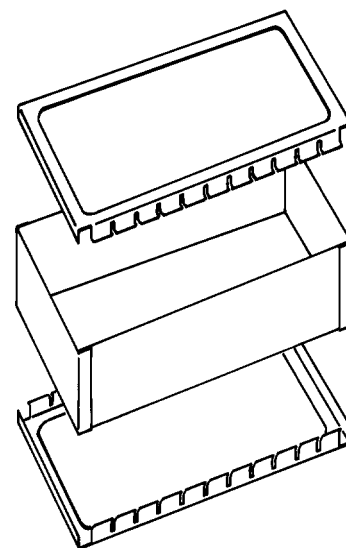
Top View



Side View



Front View



### Internal Dimensions mm (in.)

| Type    | a            | b           | c          |
|---------|--------------|-------------|------------|
| ER5-271 | 50.0 (1.97)  | 46.0 (1.81) | 25.0 (.98) |
| ER5-272 | 79.0 (3.11)  | 46.0 (1.81) | 25.0 (.98) |
| ER5-273 | 102.0 (4.02) | 46.0 (1.81) | 25.0 (.98) |
| ER5-274 | 157.0 (6.18) | 46.0 (1.81) | 25.0 (.98) |
| ER5-292 | 79.0 (3.11)  | 64.0 (2.52) | 25.0 (.98) |
| ER5-293 | 118.0 (4.65) | 64.0 (2.52) | 25.0 (.98) |
| ER5-294 | 157.0 (6.18) | 64.0 (2.52) | 25.0 (.98) |

Please see page 84 for information on screws.

Please see page 82 for information on accessories.

Please see page 5 for information on packaging.

## EMI/RFI - ER6

It is a hot tin plated sheet metal enclosure with two snap-on covers.

### Each Kit Includes

| Base | Cover |
|------|-------|
| 1    | 2     |

### Assembly

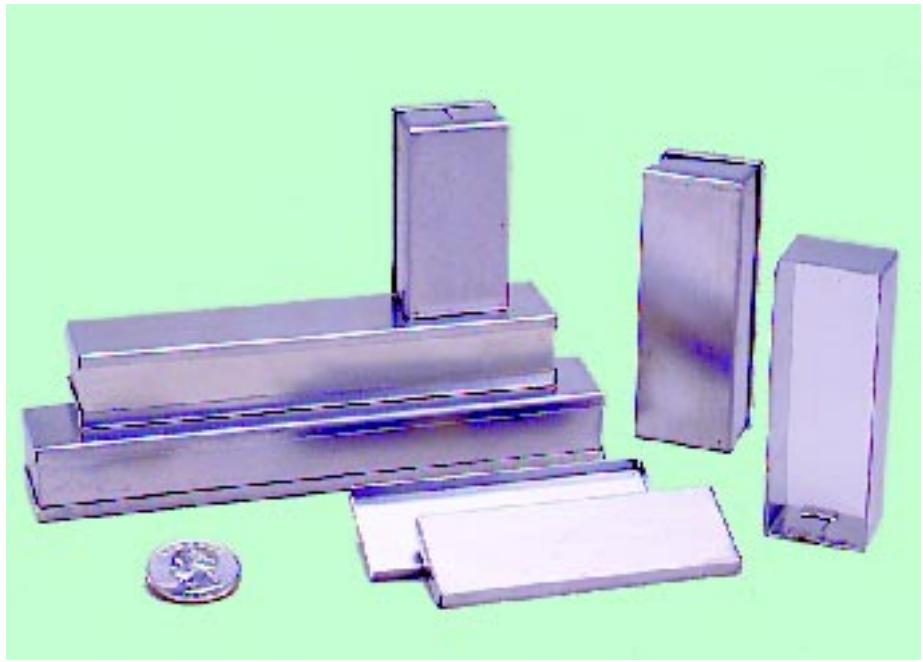
1. Snap both covers onto the base frame.

### Materials

Base and covers: Sheet metal, tin plated (HT)

### Standard Color

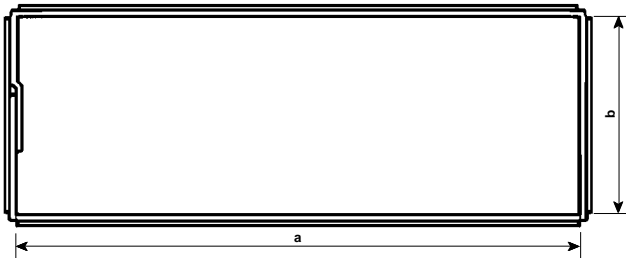
Silver



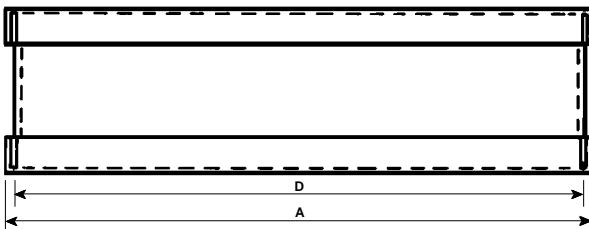
### Ordering Information

### External Dimensions mm (in.) and Special Notes

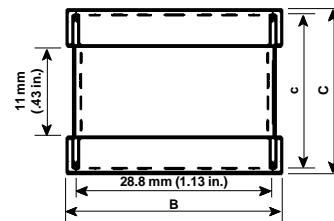
| Type    | Cat. No. | Std. Pk. | A            | B           | C          | D            |
|---------|----------|----------|--------------|-------------|------------|--------------|
| ER6-402 | 94.513   | 5        | 55.0 (2.17)  | 29.0 (1.14) | 21.0 (.83) | 54.0 (2.13)  |
| ER6-403 | 94.514   | 5        | 80.0 (3.15)  | 29.0 (1.14) | 21.0 (.83) | 79.0 (3.11)  |
| ER6-404 | 94.515   | 5        | 105.0 (4.13) | 29.0 (1.14) | 21.0 (.83) | 104.0 (4.09) |
| ER6-405 | 94.516   | 5        | 130.0 (5.12) | 29.0 (1.14) | 21.0 (.83) | 129.0 (5.08) |
| ER6-406 | 94.517   | 5        | 155.0 (6.10) | 29.0 (1.14) | 21.0 (.83) | 154.0 (6.06) |



Top View



Side View



Front View

| Internal Dimensions mm (in.) |              |             |            |
|------------------------------|--------------|-------------|------------|
| Type                         | a            | b           | c          |
| ER6-402                      | 51.0 (2.01)  | 26.0 (1.02) | 19.5 (.77) |
| ER6-403                      | 76.0 (2.99)  | 26.0 (1.02) | 19.5 (.77) |
| ER6-404                      | 101.0 (3.98) | 26.0 (1.02) | 19.5 (.77) |
| ER6-405                      | 126.0 (4.96) | 26.0 (1.02) | 19.5 (.77) |
| ER6-406                      | 151.0 (5.94) | 26.0 (1.02) | 19.5 (.77) |

Please see page 84 for information on screws.

Please see page 82 for information on accessories.

Please see page 5 for information on packaging.

## EMI/RFI - ER7

An electrolytic tin plated enclosure, it has a cover that can be soldered on for hermetic sealing.

### Each Kit Includes

| Base | Cover |
|------|-------|
| 1    | 1     |

### Assembly

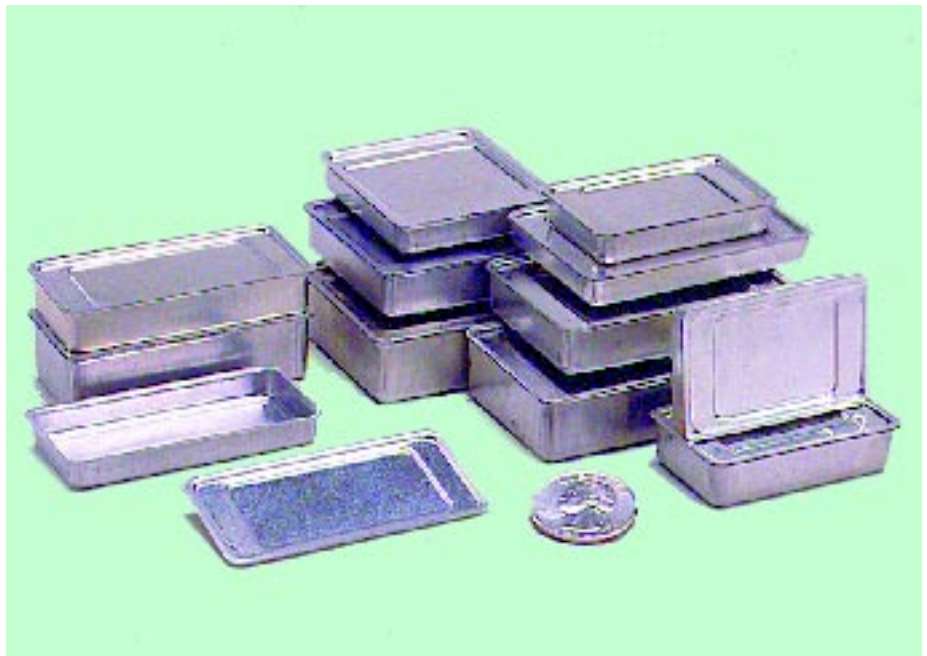
- Place the cover on the recessed rim of the base.

### Materials

Base and cover: Sheet metal, tin plated (HT)

### Standard Color

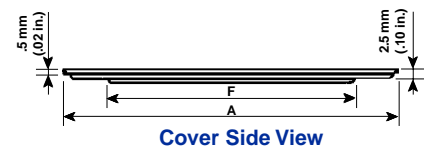
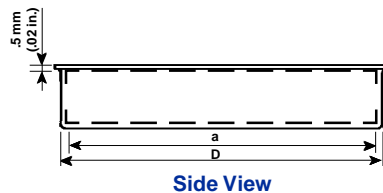
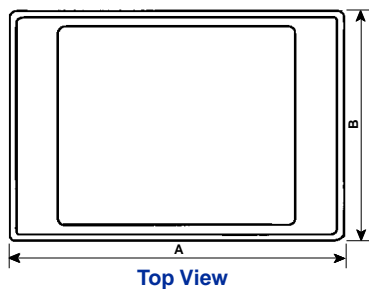
Silver



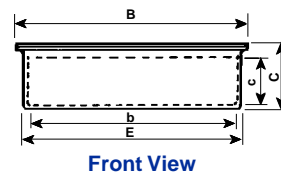
### Ordering Information

### External Dimensions mm (in.) and Special Notes

| Type    | Cat. No. | Std. Pk. | A           | B           | C           | D           | E           | F           |
|---------|----------|----------|-------------|-------------|-------------|-------------|-------------|-------------|
| ER7-433 | 94.518   | 5        | 51.0 (2.01) | 31.5 (1.24) | 9.5 (0.37)  | 48.0 (1.89) | 29.0 (1.14) | 34.0 (1.34) |
| ER7-434 | 94.519   | 5        | 63.5 (2.50) | 31.5 (1.24) | 9.5 (0.37)  | 61.0 (2.40) | 29.0 (1.14) | 47.0 (1.85) |
| ER7-435 | 94.520   | 5        | 51.0 (2.01) | 44.0 (1.73) | 9.5 (0.37)  | 48.0 (1.89) | 41.5 (1.63) | 34.0 (1.34) |
| ER7-436 | 94.521   | 5        | 63.5 (2.50) | 44.0 (1.73) | 9.5 (0.37)  | 61.0 (2.40) | 41.5 (1.63) | 47.0 (1.85) |
| ER7-443 | 94.522   | 5        | 51.0 (2.01) | 31.5 (1.24) | 13.0 (0.51) | 48.0 (1.89) | 29.0 (1.14) | 34.0 (1.34) |
| ER7-444 | 94.523   | 5        | 63.5 (2.50) | 31.5 (1.24) | 13.0 (0.51) | 61.0 (2.40) | 29.0 (1.14) | 47.0 (1.85) |
| ER7-445 | 94.524   | 5        | 51.0 (2.01) | 44.0 (1.73) | 13.0 (0.51) | 48.0 (1.89) | 41.5 (1.63) | 34.0 (1.34) |
| ER7-446 | 94.525   | 5        | 63.5 (2.50) | 44.0 (1.73) | 13.0 (0.51) | 61.0 (2.40) | 41.5 (1.63) | 47.0 (1.85) |
| ER7-453 | 94.526   | 5        | 51.0 (2.01) | 31.5 (1.24) | 17.5 (0.69) | 48.0 (1.89) | 29.0 (1.14) | 34.0 (1.34) |
| ER7-454 | 94.527   | 5        | 63.5 (2.50) | 31.5 (1.24) | 17.5 (0.69) | 61.0 (2.40) | 29.0 (1.14) | 47.0 (1.85) |
| ER7-455 | 94.528   | 5        | 51.0 (2.01) | 44.0 (1.73) | 17.5 (0.69) | 48.0 (1.89) | 41.5 (1.63) | 34.0 (1.34) |
| ER7-456 | 94.529   | 5        | 63.5 (2.50) | 44.0 (1.73) | 17.5 (0.69) | 61.0 (2.40) | 41.5 (1.63) | 47.0 (1.85) |



| Internal Dimensions mm (in.) |             |             |             |
|------------------------------|-------------|-------------|-------------|
| Type                         | a           | b           | c           |
| ER7-433                      | 47.0 (1.85) | 28.0 (1.10) | 6.0 (0.24)  |
| ER7-434                      | 60.0 (2.36) | 28.0 (1.10) | 6.0 (0.24)  |
| ER7-435                      | 47.0 (1.85) | 40.5 (1.59) | 6.0 (0.24)  |
| ER7-436                      | 60.0 (2.36) | 40.5 (1.59) | 6.0 (0.24)  |
| ER7-443                      | 47.0 (1.85) | 28.0 (1.10) | 9.5 (0.37)  |
| ER7-444                      | 60.0 (2.36) | 28.0 (1.10) | 9.5 (0.37)  |
| ER7-445                      | 47.0 (2.36) | 40.5 (1.59) | 9.5 (0.37)  |
| ER7-446                      | 60.0 (2.36) | 40.5 (1.59) | 9.5 (0.37)  |
| ER7-453                      | 47.0 (1.85) | 28.0 (1.10) | 14.0 (0.55) |
| ER7-454                      | 60.0 (2.36) | 28.0 (1.10) | 14.0 (0.55) |
| ER7-455                      | 47.0 (2.36) | 40.5 (1.59) | 14.0 (0.55) |
| ER7-456                      | 60.0 (2.36) | 40.5 (1.59) | 14.0 (0.55) |



Please see page 84 for information on screws.

Please see page 82 for information on accessories.

Please see page 5 for information on packaging.