



Potting boxes protect your electronic assemblies against shock, temperature, humidity and chemicals. You can choose from three sizes and three colors.

Storage boxes are ideal to store and organize small electronic parts. You may choose from six heights and different tray compartment configurations.

#### Materials

##### Potting Boxes

- ABS [Acrylonitrile Butadiene Styrene] (ABS)

##### Storage Boxes

- Polystyrene (PS)

Please see each ordering page for specific information.

#### Packaging

Standard packs are listed on each ordering page.

In a standard pack of one, each enclosure is shrink wrapped individually.

In a standard pack of five, enclosures are shrink wrapped in one package.

# POTTING/ STORAGE

## Potting - PS1

This small enclosure has an alphanumeric matrix on the base bottom. The walls have multiple, integral Printed Circuit Board (PCB) guides.

### Each Kit Includes

Base	Cover	Panel	Screws
1	—	—	—

### Materials

Base: ABS

### Standard Colors

Medium gray, medium blue, red; glossy finish

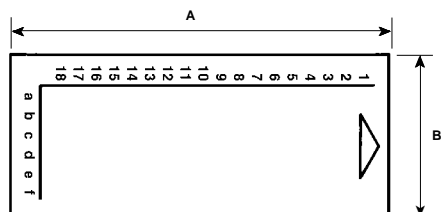


### Ordering Information

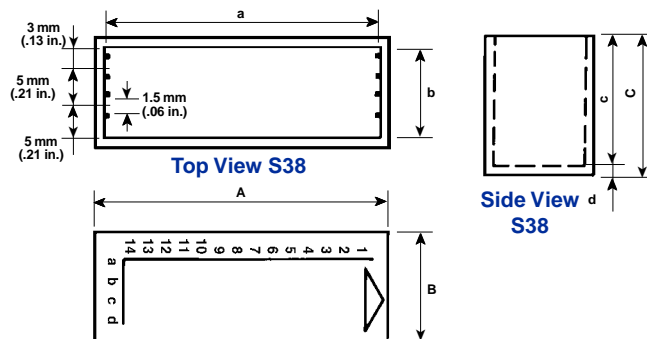
### External Dimensions mm (in.) and Special Notes

Type	Cat. No.			Std. Pk.	A	B	C
	Med.Gray	Med.Blue	Red				
PB1-S38	94.541	94.542	94.540	10	40.0 (1.57)	15.0 (.59)	19.0 (.75)
PB1-L40	94.544	94.545	94.543	10	42.0 (1.65)	22.0 (.87)	21.0 (.83)
PB1-L50	94.547	94.458	94.546	10	52.0 (2.05)	22.0 (.87)	21.0 (.83)

Color Selection: Medium Gray **[M|G]** or Medium Blue **[M|B]** or Red **[R|D]**

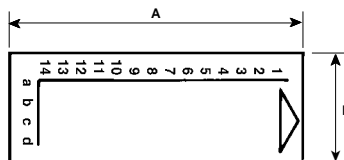


Front View  
L40 and L50

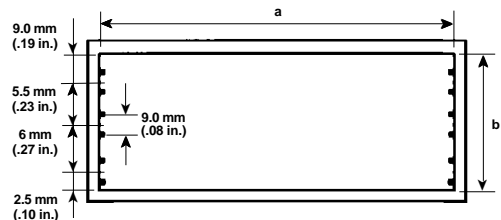


Top View S38

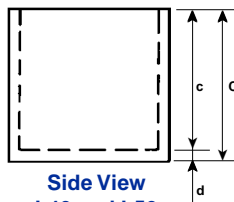
Side View  
S38



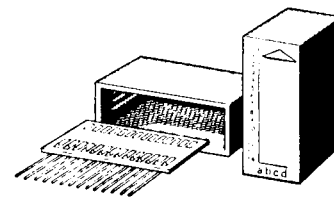
Front View S38



Top View  
L40 and L50



Side View  
L40 and L50



Type	Internal Dimensions mm (in.)			
	a	b	c	d
PB1-S38	38.0 (1.50)	13.0 (.51)	18.0 (.71)	1.0 (.04)
PB1-L40	39.0 (1.54)	19.0 (.75)	19.5 (.77)	1.5 (.06)
PB1-L50	49.0 (1.93)	19.0 (.75)	19.5 (.77)	1.5 (.06)

### Number of PCB Guides and Mounting Studs

Type	Guides	Studs	
		Base	Cover
PB1-S38	4	—	—
PB1-L40	6	—	—
PB1-L50	6	—	—

Guides column refers to external sides A.

Please see page 84 for information on screws.

Please see page 82 for information on accessories.

Please see page 5 for information on packaging.

## Storage - PS2

This small utility box has a hinged, transparent cover and a black base.

### Each Kit Includes

Base	Cover
1	1

### Materials

Base and cover: Polystyrene (PS)

### Standard Color

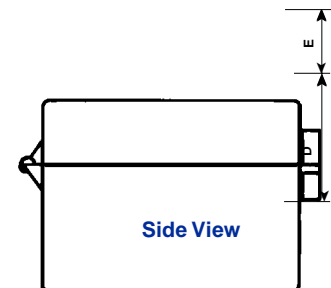
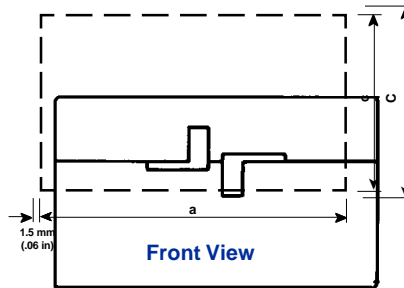
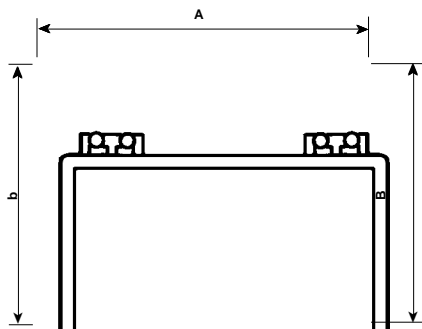
Base: Black; glossy finish



### Ordering Information

### External Dimensions mm (in.) and Special Notes

Type	Cat. No.	Std. Pk.	A	B	C	D	E
PS2-SP44BK	94.560	10	56.5 (2.22)	52.0 (2.05)	11.0 (0.43)	5.5 (.22)	5.5 (.22)
PS2-SP104BK	94.561	10	56.5 (2.22)	52.0 (2.05)	16.5 (0.65)	11.0 (.43)	5.5 (.22)
PS2-SP154BK	94.562	10	56.5 (2.22)	52.0 (2.05)	21.5 (0.85)	16.0 (.63)	5.5 (.22)
PS2-SP204BK	94.563	10	56.5 (2.22)	52.0 (2.05)	26.5 (1.04)	21.0 (.83)	5.5 (.22)
PS2-SP1010BK	94.564	10	56.5 (2.22)	52.0 (2.05)	22.0 (0.87)	11.0 (.43)	11.0 (.43)
PS2-SP1510BK	94.565	10	56.5 (2.22)	52.0 (2.05)	27.0 (1.06)	16.0 (.63)	11.0 (.43)
PS2-SP2010BK	94.566	10	56.5 (2.22)	52.0 (2.05)	32.0 (1.26)	21.0 (.83)	11.0 (.43)
PS2-SP1515BK	94.567	10	56.5 (2.22)	52.0 (2.05)	32.0 (1.26)	16.0 (.63)	16.0 (.63)
PS2-SP2015BK	94.568	10	56.5 (2.22)	52.0 (2.05)	37.0 (1.46)	21.0 (.83)	16.0 (.63)
PS2-SP2020BK	94.569	10	56.5 (2.22)	52.0 (2.05)	42.0 (1.65)	21.0 (.83)	21.0 (.83)



### Internal Dimensions mm (in.)

Type	a	b	c
PS2-SP44	53.5 (2.11)	41.5 (1.63)	8.0 (0.31)
PS2-SP104	53.5 (2.11)	41.5 (1.63)	13.5 (0.53)
PS2-SP154	53.5 (2.11)	41.5 (1.63)	18.5 (0.73)
PS2-SP204	53.5 (2.11)	41.5 (1.63)	23.5 (0.93)
PS2-SP1010	53.5 (2.11)	41.5 (1.63)	19.0 (0.75)
PS2-SP1510	53.5 (2.11)	41.5 (1.63)	24.0 (0.94)
PS2-SP2010	53.5 (2.11)	41.5 (1.63)	29.0 (1.14)
PS2-SP1515	53.5 (2.11)	41.5 (1.63)	29.0 (1.14)
PS2-SP2015	53.5 (2.11)	41.5 (1.63)	34.0 (1.34)
PS2-SP2020	53.5 (2.11)	41.5 (1.63)	39.0 (1.54)

Please see page 84 for information on screws.

Please see page 82 for information on accessories.

Please see page 5 for information on packaging.

## Storage - PS3

This storage box has a black base and a hinged, transparent cover.

### Each Kit Includes

Base	Cover
1	1

### Recommended Accessories

Trays: Please see the chart below

### Materials

Base and cover: Polystyrene (PS)

### Standard Color

Base: Black; glossy finish



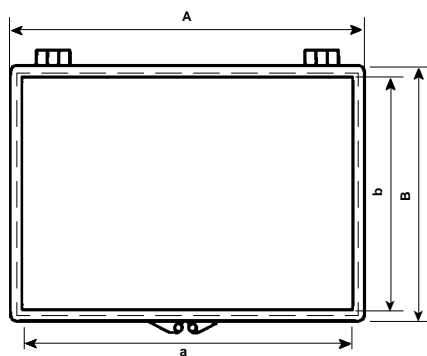
### Ordering Information - Trays

Tray Ordering	Cat. No Trays	Std. Pk.
Tray A - 36 Sections	94.576	1
Tray B - 28 Sections	94.577	1
Tray C - 20 Sections	94.578	1

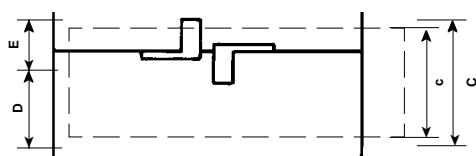
### Ordering Information - Enclosures

### External Dimensions mm (in.) and Special Notes

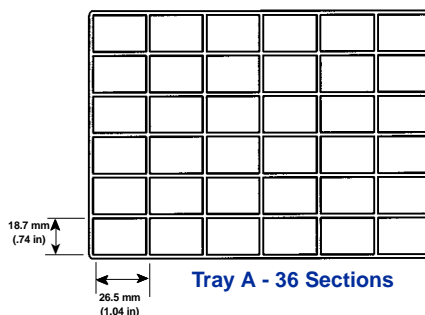
Type	Cat. No. Encl.	Max. Trays	Std. Pk.	A	B	C	D	E
PS3-SC20BK	94.570	1	1	180.5 (7.11)	140.5 (5.53)	26.0 (1.02)	13.0 (0.51)	13.0 (0.51)
PS3-SC32BK	94.571	2	1	180.5 (7.11)	140.5 (5.53)	38.0 (1.58)	25.0 (0.98)	13.0 (0.51)
PS3-SC44BK	94.572	2	1	180.5 (7.11)	140.5 (5.53)	50.0 (1.97)	25.0 (0.98)	25.0 (0.98)
PS3-SC45BK	94.573	3	1	180.5 (7.11)	140.5 (5.53)	51.0 (2.01)	38.0 (1.50)	13.0 (0.51)
PS3-SC57BK	94.574	3	1	180.5 (7.11)	140.5 (5.53)	63.0 (2.48)	38.0 (1.50)	25.0 (0.98)
PS3-SC70BK	94.575	3	1	180.5 (7.11)	140.5 (5.53)	76.0 (2.99)	38.0 (1.50)	38.0 (1.50)



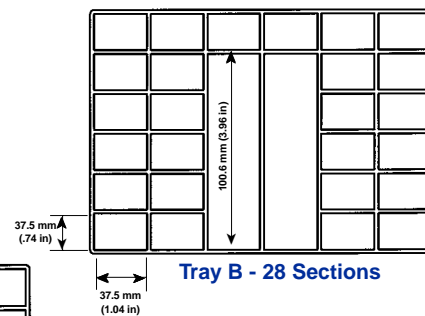
Top View



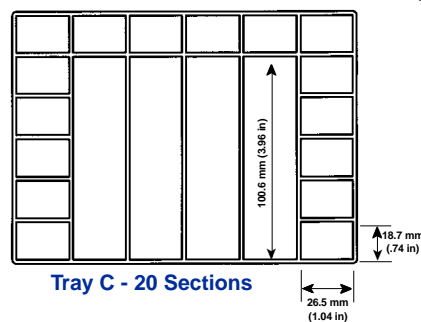
Front View



Tray A - 36 Sections



Tray B - 28 Sections



Tray C - 20 Sections

Type	Internal Dimensions mm (in.)		
	a	b	c
PS3-SC20BK	176.5 (6.95)	126.5 (4.98)	20.0 (0.79)
PS3-SC32BK	176.5 (6.95)	126.5 (4.98)	32.0 (1.26)
PS3-SC44BK	176.5 (6.95)	126.5 (4.98)	44.0 (1.73)
PS3-SC45BK	176.5 (6.95)	126.5 (4.98)	45.0 (1.77)
PS3-SC57BK	176.5 (6.95)	126.5 (4.98)	57.0 (2.24)
PS3-SC70BK	176.5 (6.95)	126.5 (4.98)	70.0 (2.76)

Please see page 84 for information on screws.

Please see page 82 for information on accessories.

Please see page 5 for information on packaging.