



Keyboard enclosures are ergonomically designed and available in a wide range of styles and sizes. You may choose from types with standard or slanted designs, as well as from types that have membrane switches, cutouts for ribbon cables and 9V battery compartments.

Materials

Halfshells

- ABS [Acrylonitrile Butadiene Styrene] (ABS)

Membrane Switches

- Polyester Mylar (PM)

Please see each ordering page for specific information.

Printed Circuit Board (PCB) Guides and Mounting Studs

The covers and bases of all Keyboard enclosures (except for the KB4) have integral PCB mounting studs.

Please see each ordering page for the location, quantity and size of all Printed Circuit Board mounting studs.

Membrane Switches

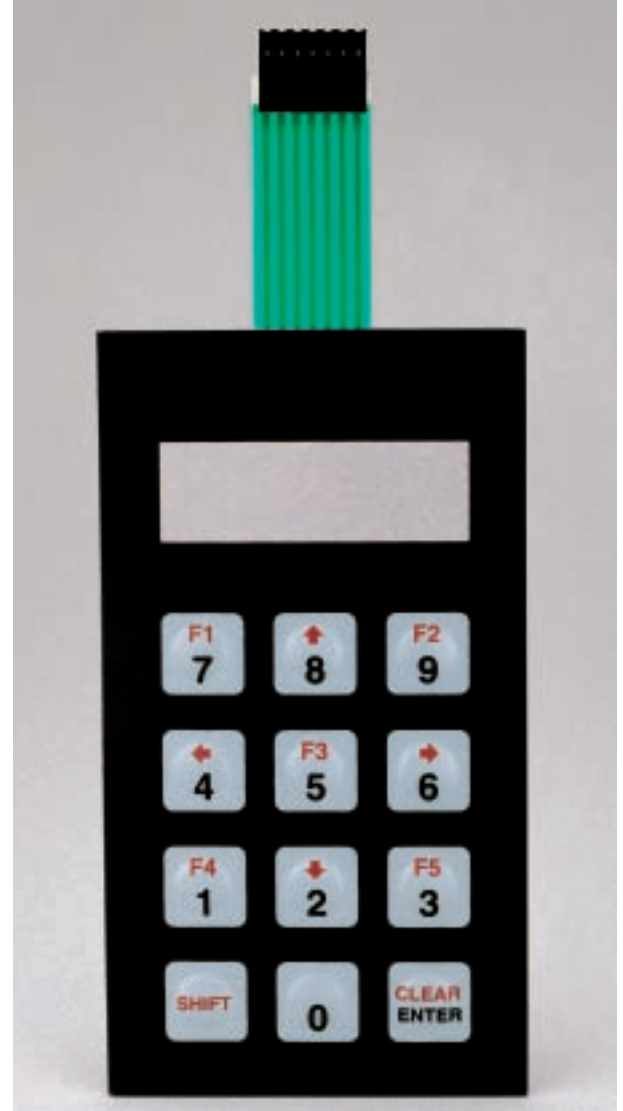
Please see page 52 for more information about these switches.

Packaging

Standard packs are listed on each ordering page.

All Keyboard enclosures are individually packaged in shrink wrap and delivered in a standard pack of one.

KEYBOARD



Altech's self-adhesive membrane switches come with 12 keys and with or without a display window. They are delivered with our keyboard enclosures, except for the K1.

Please see page 53 through 56 for ordering information.



Membrane Switch Diagram

Membrane Switch Specifications

Material

- Polyester Mylar (PM)
- Silver plated contacts

Life Expectancy

- 4+ Million Actuations

Contact Distance

- 0.4 mm (.02 in.)

Contact Resistance

- Less than 10 milliohms per square inch

Contact Rating

- 24V AC/DC, 150 milliamps

Maximum Thickness

- 1.4 mm (.06 in.)

Open Circuit

- 10 megaohms at 250V

Operating Temperature

- -20 to 55°C (-4 to 131°F)

Ribbon Cable Connector

- 7 female spring clamps for 8 mm (.31 in.) male contacts
- Pin spacing: 2.63 mm (.10 in.)
- Pin length max: 8 mm (.31 in.)

Customization

Please consult with Altech for information about custom membrane switches (Minimum Quantity: 100 pieces).

Keyboard - K1

It has a recessed area in the cover for custom membrane switches and a cutout for a ribbon cable. It has countersunk screw holes.

Each Kit Includes

Base	Cover	Panel	Screws
1	1	—	4

Assembly

1. Fit the cover to the base using the tongue and groove arrangement as a guide.
2. Insert and tighten the 4 flathead, self-tapping Phillips screws to secure the cover.

Materials

Base and cover: ABS
Screws: Steel, Black Finish (SB)

Standard Colors

Light gray, black; matte finish

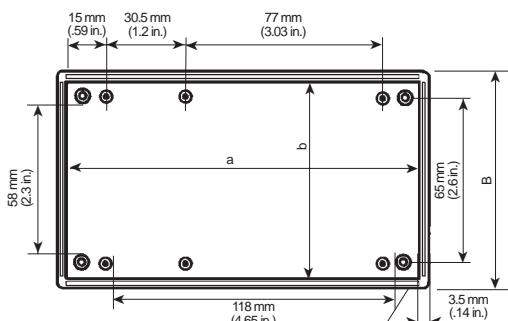


Ordering Information

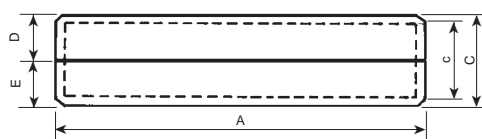
External Dimensions mm (in.) and Special Notes

Type	Cat. No.		Std. Pk.	A	B	C	D	E	Notes
	Lt. Gray	Black							
K1-550SW	94.320	94.326	1	144.5 (5.69)	85.0 (3.35)	25.0 (.98)	12.5 (.49)	12.5 (.49)	Uses SC1 Screw
K1-560SW	94.321	94.327	1	144.5 (5.69)	85.0 (3.35)	31.0 (1.22)	12.5 (.49)	18.5 (.73)	Uses SC1 Screw
K1-660SW	94.322	94.328	1	144.5 (5.69)	85.0 (3.35)	37.0 (1.46)	18.5 (.73)	18.5 (.73)	Uses SC2 Screw
K1-750SW	94.323	94.329	1	144.5 (5.69)	85.0 (3.35)	49.0 (1.93)	12.5 (.49)	36.5 (1.44)	Uses SC2 Screw
K1-760SW	94.324	94.330	1	144.5 (5.69)	85.0 (3.35)	55.0 (2.17)	18.5 (.73)	36.5 (1.44)	Uses SC2 Screw
K1-770SW	94.325	94.331	1	144.5 (5.69)	85.0 (3.35)	73.0 (2.87)	36.5 (1.44)	36.5 (1.44)	Uses SC6 Screw

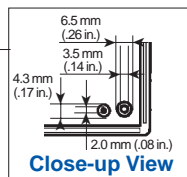
Color Selection: Light Gray [L G] or Black [B K]



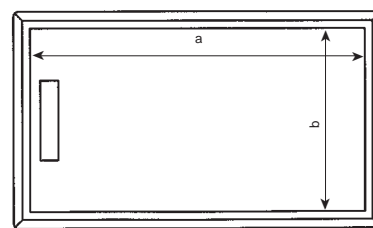
Base Top View



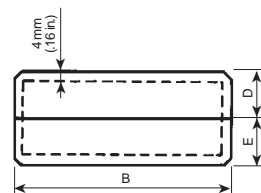
Side View



Close-up View



Cover Top View



Front View

Type	Internal Dimensions mm (in.)		
	a	b	c
K1-550SW	137.5 (5.41)	78.0 (3.07)	17.0 (0.67)
K1-560SW	137.5 (5.41)	78.0 (3.07)	23.0 (0.91)
K1-660SW	137.5 (5.41)	78.0 (3.07)	29.0 (1.14)
K1-750SW	137.5 (5.41)	78.0 (3.07)	41.0 (1.61)
K1-760SW	137.5 (5.41)	78.0 (3.07)	47.0 (1.85)
K1-770SW	137.5 (5.41)	78.0 (3.07)	65.0 (2.56)

Number of PCB Guides and Mounting Studs

Type	Guides		Studs	
	A	B	Base	Cover
K1-550SW	—	—	6	6
K1-560SW	—	—	6	6
K1-660SW	—	—	6	6
K1-750SW	—	—	6	6
K1-760SW	—	—	6	6
K1-770SW	—	—	6	6

Guides column refers to external sides A and B.

Keyboard - K2

It has a tapered cover, holding a pre-installed, 12-button membrane switch that is cabled through a cutout in the cover. K2-780BM, 880BM and 980BM have a 9V battery compartment with a sliding, snap-lock lid. The base and cover have integral Printed Circuit Board (PCB) mounting studs. It has countersunk screw holes.

Each Kit Includes

Base	Cover	Panel	Screws
1	1	—	4

Assembly

1. Fit the cover to the base using the tongue and groove arrangement.
2. Insert and tighten the 4 flathead, self-tapping Phillips screws to secure the cover.

Materials

Base and cover: ABS
 Membrane switch: Polyester Mylar (PM)
 Screws: Steel, Black Finish (SB)

Standard Colors

Light gray, black; matte finish



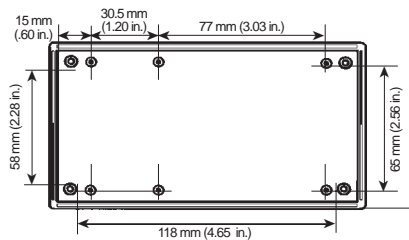
Ordering Information

External Dimensions mm (in.) and Special Notes

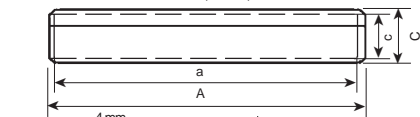
Type	Cat. No.		Std. Pk.	A	B	C	D	E	Notes
	Lt. Gray	Black							
K2-550M	94.332	94.338	1	144.5 (5.69)	85.0 (3.35)	25.0 (0.98)	12.5 (0.49)	12.5 (0.49)	Uses SC1 Screws
K2-560M	94.333	94.339	1	144.5 (5.69)	85.0 (3.35)	31.0 (1.22)	12.5 (0.49)	18.5 (0.73)	Uses SC1 Screws
K2-660M	94.334	94.340	1	144.5 (5.69)	85.0 (3.35)	37.0 (1.46)	18.5 (0.73)	18.5 (0.73)	Uses SC2 Screws
K2-750M	94.335	94.341	1	144.5 (5.69)	85.0 (3.35)	49.0 (1.93)	12.5 (0.49)	36.5 (1.44)	Uses SC2 Screws
K2-760M	94.336	94.342	1	144.5 (5.69)	85.0 (3.35)	55.0 (2.17)	18.5 (0.73)	36.5 (1.44)	Uses SC2 Screws
K2-770M	94.337	94.343	1	144.5 (5.69)	85.0 (3.35)	73.0 (2.87)	36.5 (1.44)	36.5 (1.44)	Uses SC6 Screws
K2-780BM	94.344	94.347	1	144.5 (5.69)	85.0 (3.35)	31.0 (1.22)	12.5 (0.49)	18.5 (0.73)	Uses SC2 Screws
K2-880BM	94.345	94.348	1	144.5 (5.69)	85.0 (3.35)	37.0 (1.46)	18.5 (0.73)	18.5 (0.73)	Uses SC2 Screws
K2-980BM	94.346	94.349	1	144.5 (5.69)	85.0 (3.35)	55.0 (2.17)	18.5 (0.73)	36.5 (1.44)	Uses SC2 Screws

Color Selection: Light Gray or Black

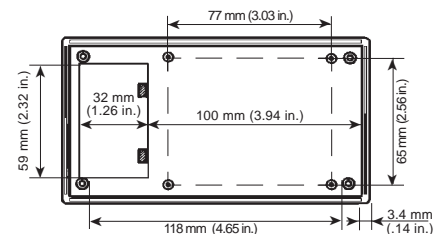
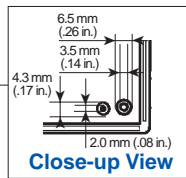
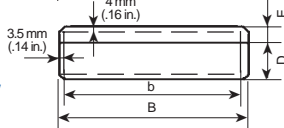
Base Top View
M-Series



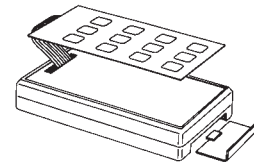
Side View



Front View



Base Top View
BM-Series



Internal Dimensions mm (in.)

Type	a	b	c
K2-550M	137.5 (5.41)	78.0 (3.07)	17.0 (0.67)
K2-560M	137.5 (5.41)	78.0 (3.07)	23.0 (0.91)
K2-660M	137.5 (5.41)	78.0 (3.07)	29.0 (1.14)
K2-750M	137.5 (5.41)	78.0 (3.07)	41.0 (1.61)
K2-760M	137.5 (5.41)	78.0 (3.07)	47.0 (1.85)
K2-770M	137.5 (5.41)	78.0 (3.07)	65.0 (2.56)
K2-780BM	137.5 (5.41)	78.0 (3.07)	23.0 (0.91)
K2-880BM	137.5 (5.41)	78.0 (3.07)	29.0 (1.14)
K2-980BM	137.5 (5.41)	78.0 (3.07)	47.0 (1.85)

Number of PCB Guides and Mounting Studs

Type	Guides		Studs	
	A	B	Base	Cover
K2-550M	—	—	6	6
K2-560M	—	—	6	6
K2-660M	—	—	6	6
K2-750M	—	—	6	6
K2-760M	—	—	6	6
K2-770M	—	—	6	6
K2-780BM	—	—	4	6
K2-880BM	—	—	4	6
K2-980BM	—	—	4	6

Guides column refers to external sides A and B.

Please see page 5 for information on packaging.

Please see page 84 for information on screws.

Please see page 82 for information on accessories.

Keyboard - K3

It has a tapered cover holding a pre-installed, 12-button membrane switch that is cabled through a cutout in the cover and a clear readout display window. K3-780BMW, 880BMW and 980BMW have a 9V battery compartment with a sliding, snap-lock lid. The base and cover have integral Printed Circuit Board (PCB) mounting studs.

Each Kit Includes

Base	Cover	Panel	Screws
1	1	—	4

Assembly

1. Fit the cover to the base using the tongue and groove arrangement as a guide.
2. Insert and tighten the 4 flathead, self-tapping Phillips screws to secure the cover.

Materials

Base and cover: ABS
 Membrane switch: Polyester Mylar (PM)
 Screws: Steel, Black Finish (SB)

Standard Colors

Light gray, black; matte finish

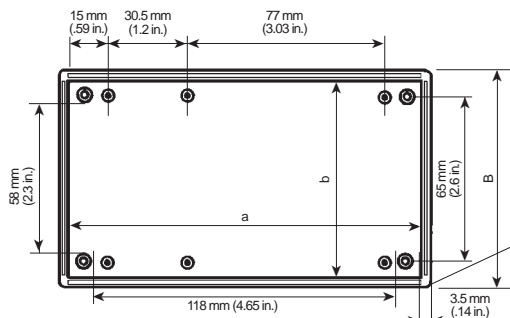


Ordering Information

External Dimensions mm (in.) and Special Notes

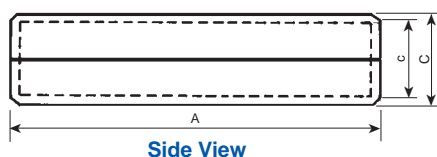
Type	Cat. No.		Std. Pk.	A	B	C	D	E	Notes
	Lt. Gray	Black							
K3-550MW	□□ 94.350	94.353	1	144.5 (5.69)	85.0 (3.35)	25.0 (0.98)	12.5 (0.49)	12.5 (0.49)	Uses SC1 Screws
K3-660MW	□□ 94.351	94.354	1	144.5 (5.69)	85.0 (3.35)	37.0 (1.46)	18.5 (0.73)	18.5 (0.73)	Uses SC2 Screws
K3-770MW	□□ 94.352	94.355	1	144.5 (5.69)	85.0 (3.35)	73.0 (2.87)	36.5 (1.44)	36.5 (1.44)	Uses SC6 Screws
K3-780BMW	□□ 94.356	94.359	1	144.5 (5.69)	85.0 (3.35)	31.0 (1.22)	12.5 (0.49)	18.5 (0.73)	Uses SC2 Screws
K3-880BMW	□□ 94.357	94.360	1	144.5 (5.69)	85.0 (3.35)	37.0 (1.46)	18.5 (0.73)	18.5 (0.73)	Uses SC2 Screws
K3-980BMW	□□ 94.358	94.361	1	144.5 (5.69)	85.0 (3.35)	55.0 (2.17)	18.5 (0.73)	36.5 (1.44)	Uses SC2 Screws

Color Selection: Light Gray [L G] or Black [B K]

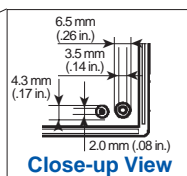


Base Top View, MW-Series

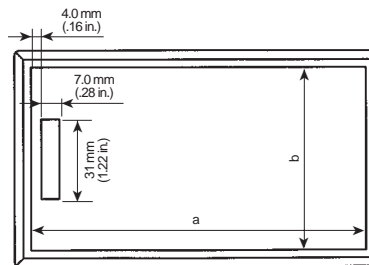
(For BMW-Series dimensions, use BM-Series on page 54)



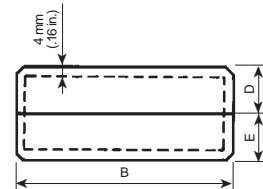
Side View



Close-up View



Cover Top View



Front View

Internal Dimensions mm (in.)			
Type	a	b	c
K3-550MW	137.5 (5.41)	78.0 (3.07)	17.0 (0.67)
K3-660MW	137.5 (5.41)	78.0 (3.07)	29.0 (1.14)
K3-770MW	137.5 (5.41)	78.0 (3.07)	65.0 (2.56)
K3-780BMW	137.5 (5.41)	78.0 (3.07)	23.0 (0.91)
K3-880BMW	137.5 (5.41)	78.0 (3.07)	29.0 (1.14)
K3-980BMW	137.5 (5.41)	78.0 (3.07)	47.0 (1.85)

Number of PCB Guides and Mounting Studs

Type	Guides		Studs	
	A	B	Base	Cover
K3-550MW	—	—	6	6
K3-660MW	—	—	6	6
K3-770MW	—	—	6	6
K3-780BMW	—	—	4	6
K3-880BMW	—	—	4	6
K3-980BMW	—	—	4	6

Guides column refers to external sides A and B.

Please see page 84 for information on screws.

Please see page 82 for information on accessories.

Please see page 5 for information on packaging.

Keyboard - K4

It has a 4° slope and a membrane switch. K4-550SMW, K4-660SMW and K4-770SMW have a clear display window in the cover and membrane switch. The base has integral Printed Circuit Board (PCB) mounting studs.

Each Kit Includes

Base	Cover	Panel	Screws
1	1	—	4

Assembly

1. Fit the cover to the base using the tongue and groove arrangement as a guide.
2. Insert and tighten the 4 flathead self-tapping Phillips screws to secure the cover.

Materials

Base and cover: ABS
 Membrane switch: Polyester Mylar (PM)
 Screws: Steel, Black Finish (SB)

Standard Colors

Light gray, black; matte finish

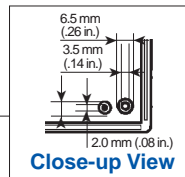
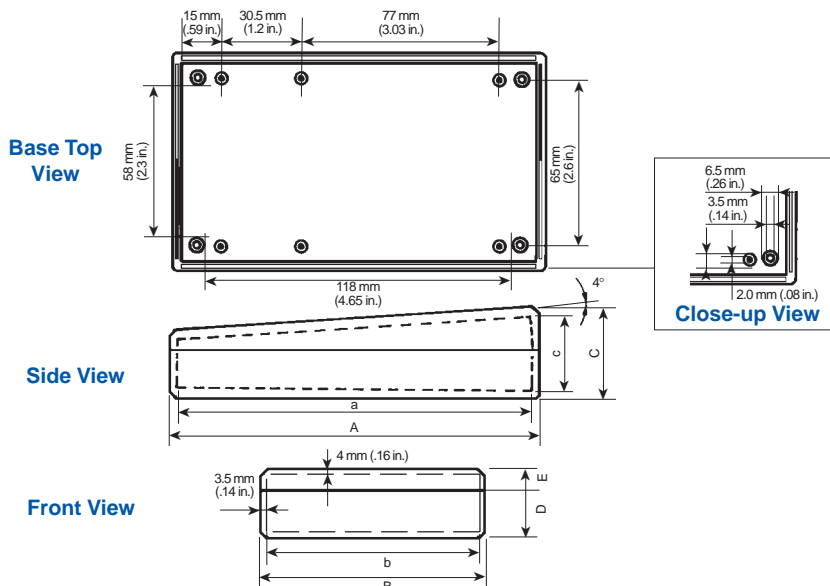


Ordering Information

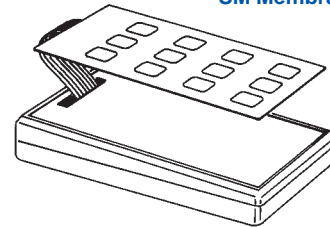
External Dimensions mm (in.) and Special Notes

Type	Cat. No.		Std. Pk.	A	B	C	D	E	Notes
	Lt. Gray	Black							
K4-550SM	94.362	94.365	1	144.5 (5.69)	85.0 (3.35)	30.0 (1.18)	12.5 (0.49)	17.5 (0.69)	Uses SC1 Screws
K4-660SM	94.363	94.366	1	144.5 (5.69)	85.0 (3.35)	36.0 (1.42)	18.5 (0.73)	17.5 (0.69)	Uses SC2 Screws
K4-770SM	94.364	94.367	1	144.5 (5.69)	85.0 (3.35)	54.0 (2.13)	36.5 (1.44)	17.5 (0.69)	Uses SC4 Screws
K4-550SMW	94.368	94.371	1	144.5 (5.69)	85.0 (3.35)	30.0 (1.18)	12.5 (0.49)	17.5 (0.69)	Uses SC1 Screws
K4-660SMW	94.369	94.372	1	144.5 (5.69)	85.0 (3.35)	36.0 (1.42)	18.5 (0.73)	17.5 (0.69)	Uses SC2 Screws
K4-770SMW	94.370	94.373	1	144.5 (5.69)	85.0 (3.35)	54.0 (2.13)	36.5 (1.44)	17.5 (0.69)	Uses SC4 Screws

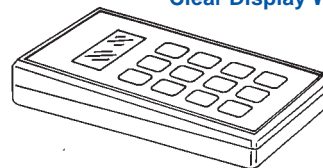
Color Selection: Light Gray [L] or Black [B]



SM Membrane Switch



SMW Membrane Switch With Clear Display Window



Internal Dimensions mm (in.)

Type	a	b	c
K4-550SM	137.5 (5.41)	78.0 (3.07)	22.0 (0.87)
K4-660SM	137.5 (5.41)	78.0 (3.07)	28.0 (1.10)
K4-770SM	137.5 (5.41)	78.0 (3.07)	46.0 (1.81)
K4-550SMW	137.5 (5.41)	78.0 (3.07)	22.0 (0.87)
K4-660SMW	137.5 (5.41)	78.0 (3.07)	28.0 (1.10)
K4-770SMW	137.5 (5.41)	78.0 (3.07)	46.0 (1.81)

Number of PCB Guides and Mounting Studs

Type	Guides		Studs	
	A	B	Base	Cover
K4-550SM	—	—	6	—
K4-660SM	—	—	6	—
K4-770SM	—	—	6	—
K4-550SMW	—	—	6	—
K4-660SMW	—	—	6	—
K4-770SMW	—	—	6	—

Guides column refers to external sides A and B.