



Our compact Handle/Transport enclosures come complete with easy-to-grip, multi-tilt support handles. The handle is mounted to the base halfshell with included hardware. To meet most any use, the handle is adjustable to eight positions, each offset by 45° increments.

### Materials

#### Halfshells

- ABS [Acrylonitrile Butadiene Styrene] (ABS)
- Polystyrene (PS)

#### Panels

- ABS [Acrylonitrile Butadiene Styrene] (ABS)
- Aluminum (AL)

Please see each ordering page for specific information.

### Printed Circuit Board (PCB) Guides and Mounting Studs

All Handle/Transport enclosures have integral PCB guides and mounting studs.

- The PCB guides accept boards up to 2.10 mm (.08 in.) thick.

Please see each ordering page for the location, quantity and size of all Printed Circuit Board guides and mounting studs, as well the maximum thickness of a PCB that can be placed into each enclosure.

### Packaging

To protect your panels, they are shipped with pull-off plastic film on one side.

Standard packs are listed on each ordering page. All Handle/Transport enclosures are individually packed in cardboard boxes and delivered in a standard pack of one.

# HANDLE/ TRANSPORT

## Handle/Transport - HT1

This portable unit's handle can be locked in any of eight positions and used as a stand. It has vented halfshells and recessed, silk screenable panels. Each halfshell has integral Printed Circuit Board (PCB) guides and mounting studs.

### Each Kit Includes

Halfshells	Panel	Screws
2	2	8-SC10

### Assembly

1. Place the panel in the mounting channels in the base.
2. Slide the cover over the panel and onto the base using the tongue and groove arrangement as a guide.
3. Insert and tighten the 8 panhead, self-tapping screws to secure the halfshells.

### Materials

Halfshells: Polystyrene (PS)  
 Panels: Aluminum (AL)  
 Screws: Steel, Nickel Plated (SP)

### Standard Colors

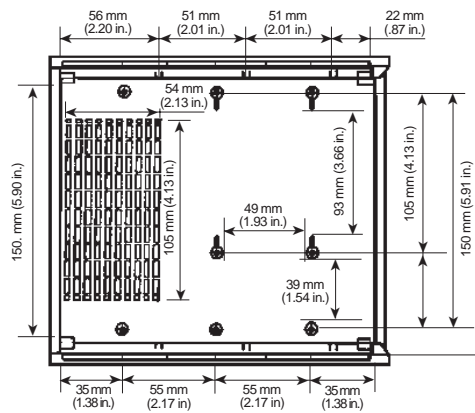
Medium gray, black; matte finish

### Ordering Information

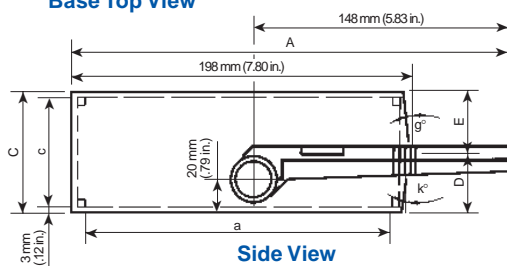
### External Dimensions mm (in.) and Special Notes

Type	Cat. No.		Std. Pk.	A	B	C	D	E
	Med. Gray	Black						
HT1-AUS41	94.260	94.264	1	255.0 (10.04)	205.0 (8.07)	54.0 (2.13)	36.0 (1.42)	18.0 (.71)
HT1-AUS44	94.261	94.265	1	255.0 (10.04)	205.0 (8.07)	72.0 (2.83)	36.0 (1.42)	36.0 (1.42)
HT1-AUS45	94.262	94.266	1	255.0 (10.04)	205.0 (8.07)	90.0 (3.54)	54.0 (2.13)	36.0 (1.42)
HT1-AUS55	94.263	94.267	1	255.0 (10.04)	205.0 (8.07)	108.0 (4.25)	54.0 (2.13)	54.0 (2.13)

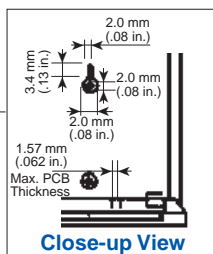
Color Selection: Medium Gray  M[G] or Black  B[K]



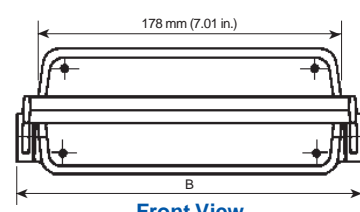
Base Top View



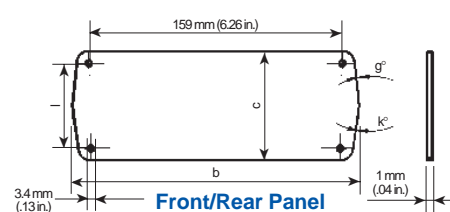
Side View



Close-up View



Front View



Front/Rear Panel

Internal Dimensions mm (in.)						
Type	a	b	c	g°	k°	l
HT1-AUS41	180.0 (7.09)	172.0 (6.77)	48.0 (1.89)	7.0°	13.0°	41.0 (1.61)
HT1-AUS44	180.0 (7.09)	172.0 (6.77)	66.0 (2.60)	7.0°	7.0°	59.0 (2.32)
HT1-AUS45	180.0 (7.09)	172.0 (6.77)	84.0 (3.31)	5.0°	7.0°	77.0 (3.03)
HT1-AUS55	180.0 (7.09)	172.0 (6.77)	102.0 (4.02)	5.0°	5.0°	96.0 (3.78)

### Number of PCB Guides and Mounting Studs

Type	Guides	Studs
	A	Each Halfshell
HT1-AUS41	3	8
HT1-AUS44	3	8
HT1-AUS45	3	8
HT1-AUS55	3	8

Guides column refers to external side A.

Please see page 84 for information on screws.

Please see page 82 for information on accessories.

Please see page 5 for information on packaging.

## Handle/Transport - HT2

This portable unit's handle can be locked in any of eight positions and used as a stand. It has vented halfshells and recessed, silk screenable panels. Each halfshell has integral Printed Circuit Board (PCB) guides and mounting studs.

### Each Kit Includes

Halfshells	Panel	Screws
2	2	8-SC10

### Assembly

1. Place the panels in the mounting channels in the base.
2. Slide the cover over the panels and onto the base using the tongue and groove arrangement as a guide.
3. Insert and tighten the 8 panhead, self-tapping screws to secure the halfshells.

### Materials

Halfshells: Polystyrene (PS)  
 Panels: Aluminum (AL)  
 Screws: Steel, Nickel Plated (SP)

### Standard Colors

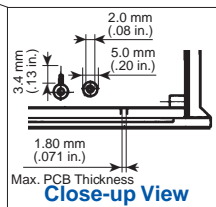
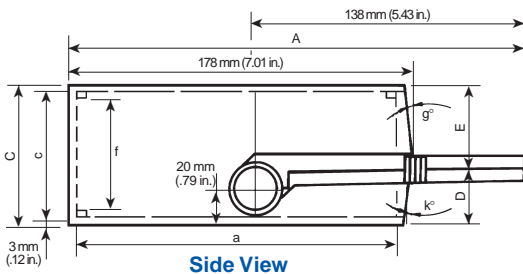
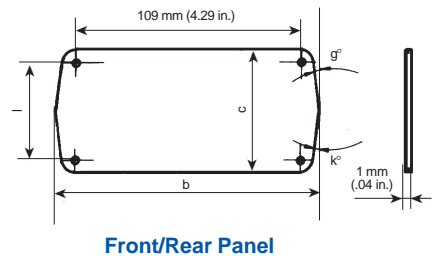
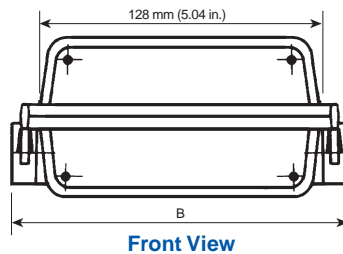
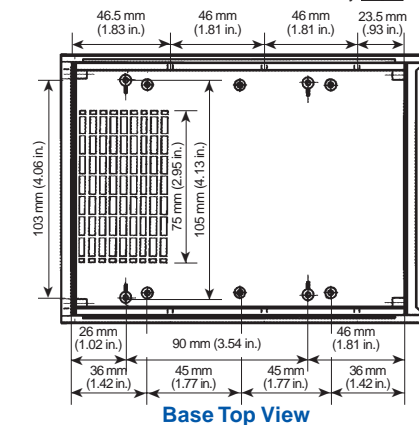
Medium gray, black; matte finish

### Ordering Information

### External Dimensions mm (in.) and Special Notes

Type	Cat. No.		Std. Pk.	A	B	C	D	E
	Med. Gray	Black						
HT2-KL41	94.268	94.272	1	235.0 (9.25)	153.0 (6.02)	54.0 (2.13)	36.0 (1.42)	18.0 (0.71)
HT2-KL44	94.269	94.273	1	235.0 (9.25)	153.0 (6.02)	72.0 (2.83)	36.0 (1.42)	36.0 (1.42)
HT2-KL45	94.270	94.274	1	235.0 (9.25)	153.0 (6.02)	90.0 (3.54)	54.0 (2.13)	36.0 (1.42)
HT2-KL55	94.271	94.275	1	235.0 (9.25)	153.0 (6.02)	108.0 (4.25)	54.0 (2.13)	54.0 (2.13)

Color Selection: Medium Gray **[M]** or Black **[B]**



### Number of PCB Guides and Mounting Studs

Type	Guides	Studs
	A	Each Halfshell
HT2-KL41	3	10
HT2-KL44	3	10
HT2-KL45	3	10
HT2-KL55	3	10

Guides column refers to external side A.

### Internal Dimensions mm (in.)

Type	a	b	c	f	g°	k°	l
HT2-KL41	162.0 (6.38)	122.0 (4.80)	48.0 (1.89)	36.0 (1.42)	7.0°	13.0°	41.0 (1.61)
HT2-KL44	162.0 (6.38)	122.0 (4.80)	66.0 (2.60)	54.0 (2.13)	7.0°	7.0°	59.0 (2.32)
HT2-KL45	162.0 (6.38)	122.0 (4.80)	84.0 (3.31)	72.0 (2.83)	5.0°	7.0°	77.0 (3.03)
HT2-KL55	162.0 (6.38)	122.0 (4.80)	102.0 (4.02)	90.0 (3.54)	5.0°	5.0°	96.0 (3.78)

Please see page 84 for information on screws.

Please see page 82 for information on accessories.

Please see page 5 for information on packaging.

## Handle/Transport - HT3

This portable unit's handle can be locked in any of 8 positions and used as a stand. It has recessed, silk screenable panels and 4 feet.

### Each Kit Includes

Halfshells	Panel	Screws	Other
2	2	4-SC21	4 feet

### Assembly

1. Align the panels in the mounting channel in the base.
2. Place the screw guides over the mounting posts, fluted side down.
3. Slide the cover over the panels and onto the base using the tongue and groove arrangement as a guide.
4. Insert the 4 flathead, self-tapping screws through the feet and tighten them to secure the halfshells.
5. Snap the rubber feet into place.

### Materials

Halfshells and panels: ABS  
Screws: Steel, Galvanized (SG)

### Standard Colors

Halfshells: Light gray, black; matte finish  
Panels: Light gray, black; gloss finish

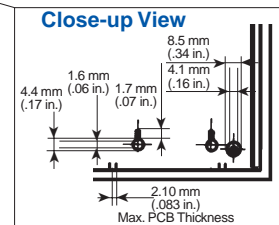
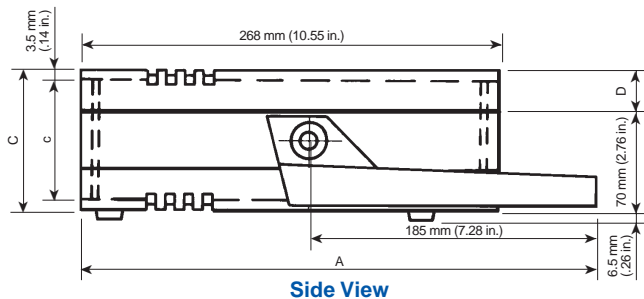
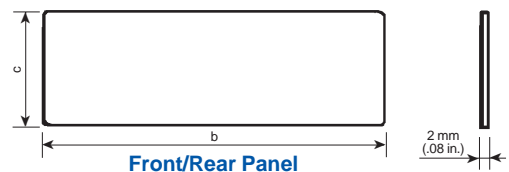
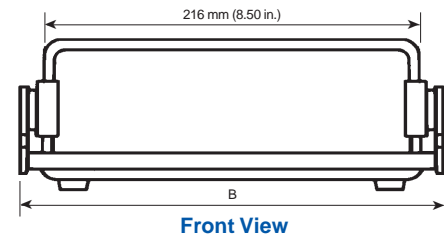
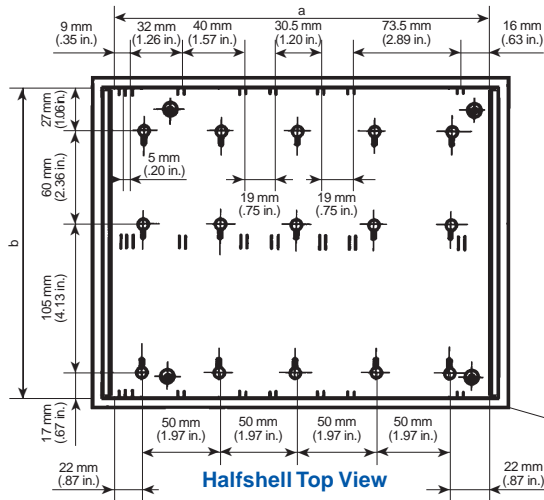


### Ordering Information

### External Dimensions mm (in.) and Special Notes

Type	Cat. No.		Std. Pk.	A	B	C	D
	Lt. Gray	Black					
HT3-761	94.276	94.278	1	331.0 (13.03)	245.0 (9.65)	95.0 (3.74)	25.0 (0.98)
HT3-762	94.277	94.279	1	331.0 (13.03)	245.0 (9.65)	109.0 (4.29)	39.0 (1.54)

Color Selection: Light Gray [L] [G] or Black [B] [K]



### Number of PCB Guides and Mounting Studs

Type	Guides	Studs
	A	Each Halfshell
HT3-761	8	15
HT3-762	8	15

Guides column refers to external side A.

Internal Dimensions mm (in.)			
Type	a	b	c
HT3-761	244.0 (9.61)	209.0 (8.23)	88.0 (3.46)
HT3-762	244.0 (9.61)	209.0 (8.23)	102.0 (4.02)

Please see page 84 for information on screws.

Please see page 82 for information on accessories.

Please see page 5 for information on packaging.