

Disconnect Switches

Manual Transfer Switches, 16-100A

16-100 Amperes

Heavy Duty, 600V

3 pole configurations

4-pole configuration can be obtained by adding a field-installable snap-on power pole

UL508 and UL98 listed options

UL508 - File # E63822 (CSA 22.2 No. 14, File #LR58247)

UL98 - File# E101914 (CSA 22.2 No.4, File #LR58077)

IEC947-1 and 3, IEC 664, IEC269 and IEC204

Compact Solution

Modern, Attractive Design

Side by Side Construction

Open Type & Enclosed Versions



Compact Design

Double-sided spring construction coupled with fewer components and an exceptional short current path enables a uniquely compact manual transfer switch solution.

On-Load Switching

Electrical Characteristics of the OT transfer switch line allows on-load switching between two power supplies, adding value to and enhancing the performance of the transfer switch and its applications.

Clear Position Indication

ABB Manual Transfer Switches are equipped with three definite positions (I-O-II). Isolation between two power supplies is guaranteed by the contact mechanisms, designed as a positive opening construction with mechanically operated contacts.

Safe Construction

All moving parts are housed in a fully enclosed casing, allowing safe operation and protection of equipment and the user.

Technical information

	OT16E3C	OT25E3C	OT32E3C	OT45E3C	OT63E3C	OT30E3C	OT60E3C	OT100E3C
UL General Purpose Amp Rating	16	25	40	60	80	30	60	100
IEC AC21 amp rating	16	25	40	63	80	40	63	115
Approvals	UL508	UL508	UL508	UL508	UL508	UL98	UL98	UL98
Maximum Operating Voltage	600V	600V	600V	600V	600V	600V	600V	600V
Technical Ratings - UL								
Maximum Horsepower Ratings								
Three Phase								
200-208V	3	7.5	10	15	20	10	20	25
240V	5	7.5	10	15	20	10	20	30
480V	10	15	20	30	40	20	40	50
600V	10	20	25	30	40	30	40	50
Single Phase								
120V	1	1.5	2	2	2	2	3	5
240V	2	3	5	5	5	5	7.5	15
Terminal Lugs								
Wire Size	#18-8	#18-8	#18-8	#14-1	#14-1	#14-4	#14-4	#8-1/0
Wire Type	Cu	Cu	Cu	Cu	Cu	Cu	Cu	Cu
Shaft Size (mm)	5	5	5	5	5	5	5	5

Selector Handles

UL/NEMA Type	IEC Type	Color	Defeatable	Padlockable	Weight (lbs)	Catalog Number
1, 3R, 12	IP65	Black	Yes	Yes	0.16	OHB2AJE011

Pistol Handles

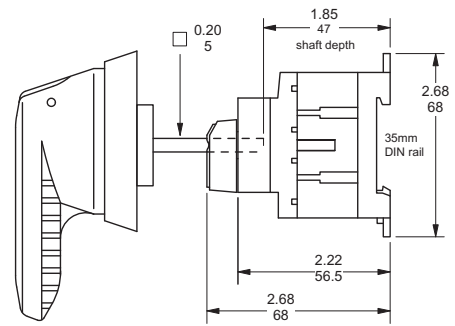
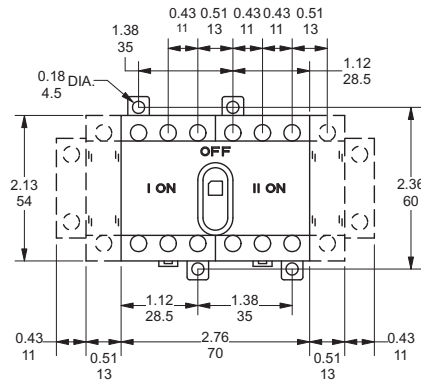
UL/NEMA Type	IEC Type	Color	Length (in/mm)	Defeatable	Padlockable	Weight (lbs)	Catalog Number
1, 3R, 12	IP65	Black	2.6/65	Yes	Yes	0.29	OHB65J5E011
1, 3R, 4, 4X, 12	IP66	Black	2.6/65	Yes	Yes	0.29	OHB65L5E011

Snap-on power poles

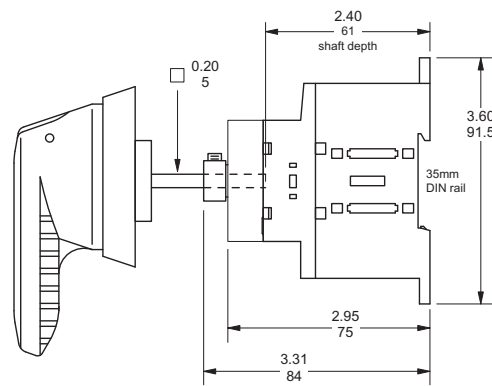
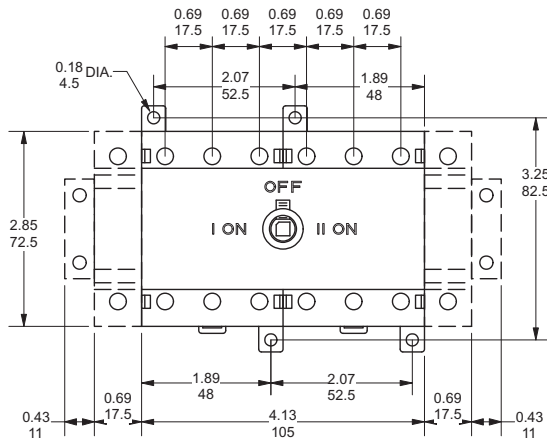
For use on:	Weight	AC Thermal amp rating	AC rated voltage	Catalog number
OT16, 25, 32	0.07	40	600	OTPS32EP
OT45, 63	0.13	80	600	OTPS63EP
OT30, 60	0.31	60	600	OTPS60EP
OT100	0.31	100	600	OTPS125EP



OT16, 25, 32E3C & E4C – Transfer switches



OT45, 63E3C & E4C – Transfer switches



OT100E3C & E4C – Transfer switches

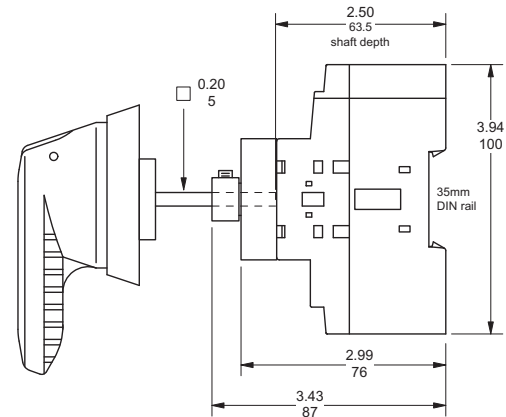
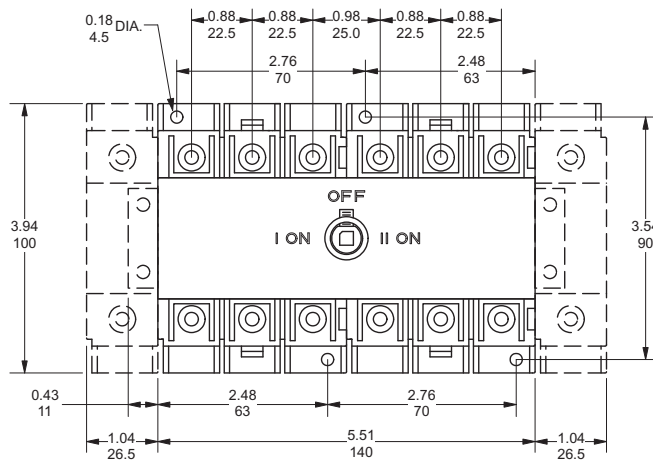


ABB Inc.
 1206 Hatton Road
 Wichita Falls, TX 76302
 For more information and
 the location of your local
 field office please go to
www.abb-control.com

Publication LV101
 No. 1SXU 301 101 D0201
 Printed in USA, December, 2007